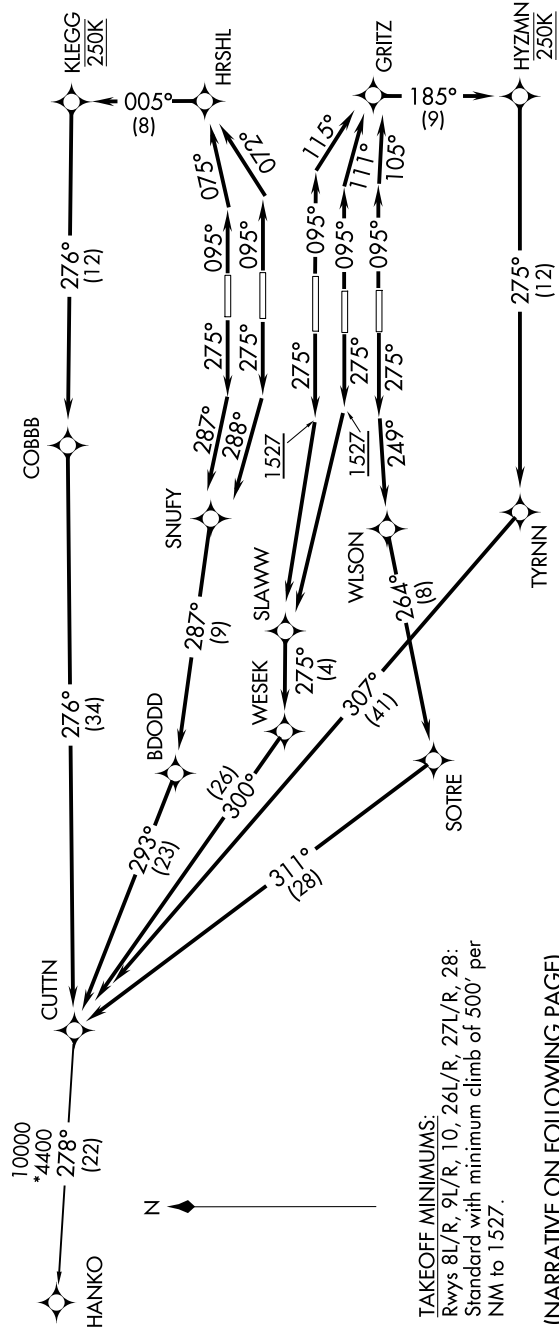


CUTT TWO DEPARTURE (RNAV) AL-26 (FAA)

D-ATIS 125.55
 CLNC DEL 118.1
 CPDIC
 GND CON
 121.9 254.4 (Rwys 8L-26R, 8R-26L)
 121.75 254.4 (Rwys 9L-27R, 9R-27L)
 121.65 254.4 (Rwy 10-28)
 ATLANTA TOWER
 119.1 254.4 (Rwy 8L-26R)
 125.325 254.4 (Rwy 8R-26L)
 119.3 254.4 (Rwy 9R-27L)
 123.85 254.4 (Rwy 9L-27R)
 119.5 254.4 (Rwy 10-28)
 ATLANTA DEP CON
 125.7 281.425 (Rwys 8L-26R, 8R-26L)
 125.65 281.425 (Rwys 9L-27R, 9R-27L)
 135.375 281.425 (Rwy 10-28)

NOTE: If unable to accept climb rate, advise Clearance Delivery on initial contact.
 NOTE: Use departure frequency depicted unless otherwise advised.
 NOTE: For Turboprop aircraft only.
 NOTE: DME/DME/IRU or GPS Required.
 NOTE: RNAV 1.
 NOTE: RADAR Required for non-GPS equipped aircraft.
 NOTE: Transponder code will be issued via PDC or Atlanta Clearance Delivery.
 NOTE: Accelerate to 250K, if unable, advise both tower and Departure Control on initial contact.
 NOTE: Aircraft at Midfield Ramps will advise Ramp Towers of departure SID prior to pushback.
 Upon receipt of ATC clearance (from ATL Clearance Delivery), read back only your call sign and transponder code, unless you have a question.

TOP ALTITUDE:
10000



TAKEOFF MINIMUMS:
 Rwys 8L/R, 9L/R, 10, 26L/R, 27L/R, 28:
 Standard with minimum climb of 500' per
 NM to 1527.

(NARRATIVE ON FOLLOWING PAGE)

NOTE: Chart not to scale.