

LOC/DME I-PKU 111.75 Chan 54 (Y)	APP CRS 275°	Rwy Idg TDZE Apt Elev 9000 998 1026
--	------------------------	---

ILS RWY 28 (CAT II)
HARTSFIELD-JACKSON ATLANTA INTL (ATL)

Simultaneous approach authorized with Rwy 26R or 26L or 27R, or Rwy 26R and 27R.
DME or Radar Required.

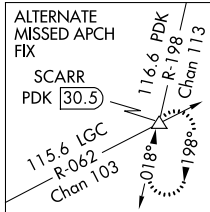
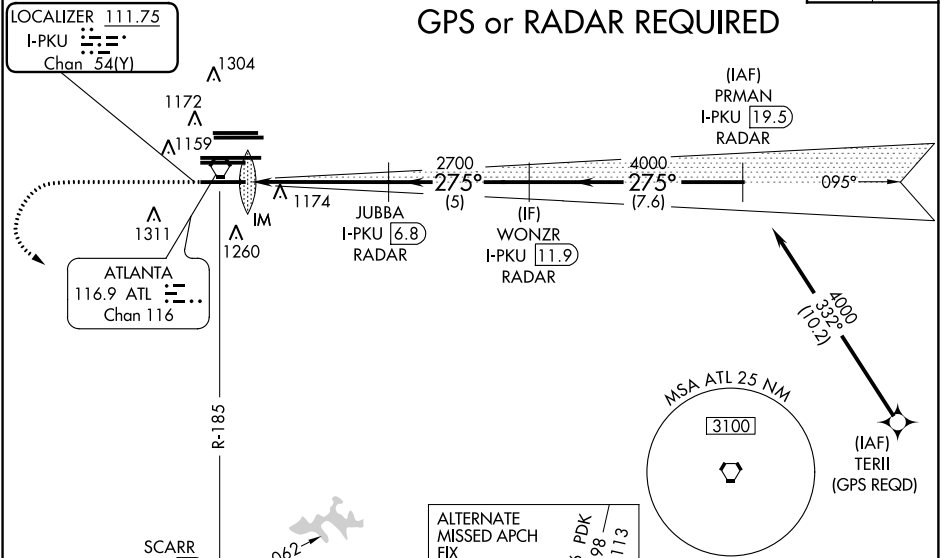
ALSF-2
MISSED APPROACH: Climb to 1400 then climbing left turn to 3000 on ATL VORTAC R-185 to SCARR INT/ ATL 15 DME and hold.

D-ATIS ARR 119.65	ATLANTA APP CON APP CON 127.9 379.9	ATLANTA TOWER 8L-26R 8R-26L 9L-27R 9R-27L 10-28 RWYS DEP 125.55 127.9 379.9 119.1 125.325 123.85 119.3 119.5 254.4	ALL RWYS (8L-26R,8R-26L) (9L-27R,9R-27L) 10-28 RWYS 121.9 121.75 121.65 254.4	GND CON 121.9 121.75 121.65 254.4	ALL RWYS
-----------------------------	---	---	--	---	----------

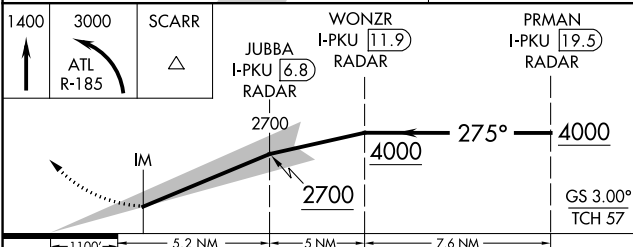
Λ 2049
Λ 2049

CLNC DEL CPDLC
118.1

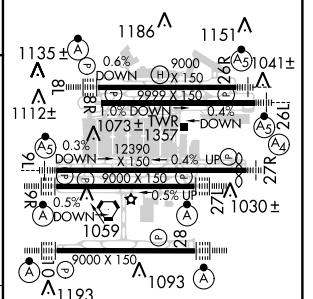
GPS or RADAR REQUIRED



ELEV 1026 TDZE 998



1400	3000	SCARR
ATL R-185		△



CATEGORY	A	B	C	D
S-ILS 28	RA 188/12		100 DA 1098	

CATEGORY II ILS - SPECIAL AIRCREW & AIRCRAFT CERTIFICATION REQUIRED

HIRL all Rwy
TDZ/CL Rwy 8L, 9R,
10, 26R, 27L and 28

SE-4, 31 JAN 2019 to 28 FEB 2019

SE-4, 31 JAN 2019 to 28 FEB 2019