

| | | |
|---|------------------------|--|
| LOC/DME I-FUN 108.9 Chan 26 | APP CRS 095° | Rwy Idg 8925 11730 TDZE 1026 1019 Apt Elev 1026 1026 |
|---|------------------------|--|

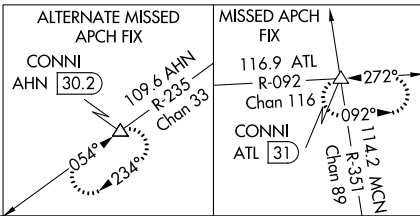
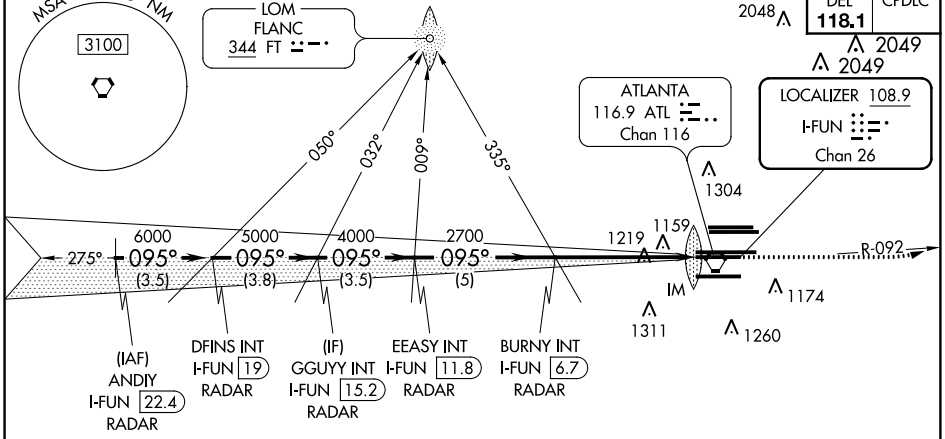
ILS RWY 9R (SA CAT I)

HARTSFIELD-JACKSON ATLANTA INTL (ATL)

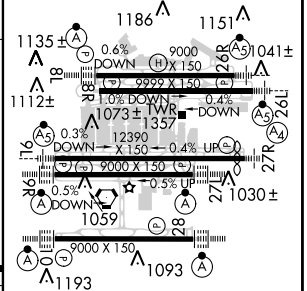
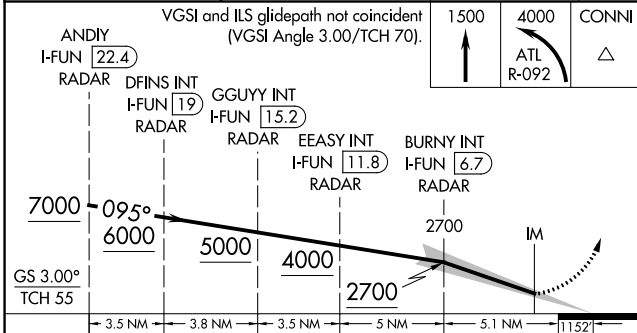
⚠ Inop table does not apply to Sidestep 9L for Cats A and B. ADF or DME or RADAR required. Simultaneous approach authorized with Rwy 8L or 8R. Requires specific OPSPEC, MSPEC, or LOA approval and use of HUD to DH.

| | | | | | |
|-----------------------------|--|--|-----------------------------|--|-------------|
| D-ATIS ARR 119.65 | ATLANTA APP CON 127.9 379.9 | ATLANTA TOWER 8L-26R 8R-26L 9L-27R 9R-27L 10-28 RWYS 119.1 125.325 123.85 119.3 119.5 254.4 | ALL RWYS 121.9 | GND CON (8L-26R,8R-26L)(9L-27R,9R-27L) 10-28 RWYS 121.75 121.65 254.4 | ALL RWYS |
|-----------------------------|--|--|-----------------------------|--|-------------|

RADAR REQUIRED



| | |
|-----------|--------------|
| ELEV 1026 | TDZE 9R 1026 |
| | TDZE 9L 1019 |



| | | | | |
|----------|-----------------------|---|---|---|
| CATEGORY | A | B | C | D |
| S-ILS 9R | RA 196/14 150 DA 1176 | | | |

SA CATEGORY I ILS - SPECIAL AIRCREW & AIRCRAFT CERTIFICATION REQUIRED

HIRL all Rwys
TDZ/CL Rwys 8L, 9R, 10, 26R, 27L and 28

SE-4, 31 JAN 2019 to 28 FEB 2019

SE-4, 31 JAN 2019 to 28 FEB 2019