

LOC/DME I-FSQ <b>108.5</b> Chan <b>22</b>	APP CRS <b>275°</b>	Rwy Idg TDZE Apt Elev	27L <b>8865</b> <b>999</b> <b>1026</b>	27R <b>11690</b> <b>985</b> <b>1026</b>
---	------------------------	-----------------------------	---	--

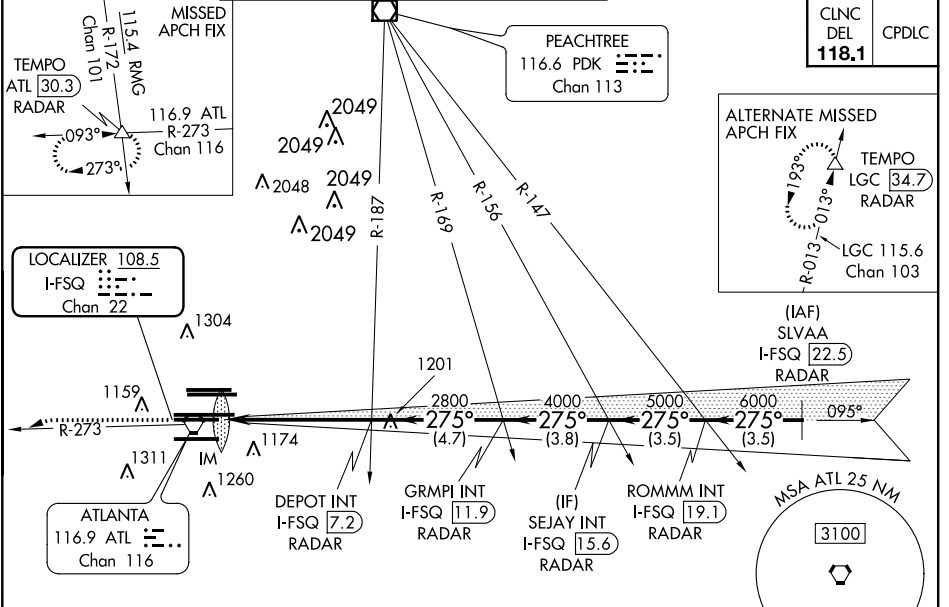
# ILS or LOC RWY 27L

## HARTSFIELD-JACKSON ATLANTA INTL (ATL)

**▼** Inop table does not apply to Sidestep Rwy 27R.  
Simultaneous approach authorized with Rwy 26R or 26L.

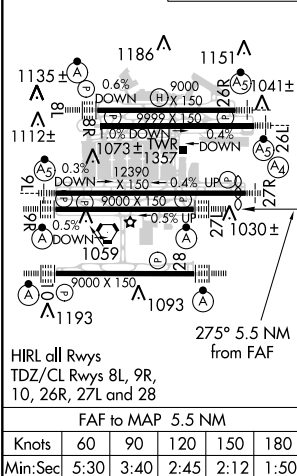
Rwy 27L ALSF-2 	Rwy 27R MALS 	MISSED APPROACH: Climb to 1400 then climbing left turn to 4000 on ATL VORTAC R-273 to TEMPO INT/ATL 30.3 DME/RADAR and hold.
-----------------------	---------------------	--

D-ATIS ARR <b>119.65</b>	ATLANTA APP CON DEP <b>127.9</b> <b>379.9</b>	ATLANTA TOWER 8L-26R 8R-26L 9L-27R 9R-27L 10-28 RWYS	ALL DEP <b>119.1</b> <b>125.325</b> <b>123.85</b> <b>119.3</b> <b>119.5</b> <b>254.4</b>	GND CON DEP <b>121.9</b>	ALL RWYS DEP <b>121.75</b> <b>121.65</b> <b>254.4</b>
-----------------------------	---	---	---	-----------------------------	---



ELEV 1026	<b>D</b>	TDZE 27L 999 TDZE 27R 985
-----------	----------	------------------------------

### RADAR REQUIRED



1400	4000	TEMPO	VGSI and ILS glidepath not coincident (VGSI Angle 3.00/TCH 79).	SLVAA
*LOC only.				
I-FSQ [2.8]	DEPOT INT I-FSQ [7.2] RADAR	GRMPI INT I-FSQ [11.9] RADAR	SEJAY INT I-FSQ [15.6] RADAR	ROMMM INT I-FSQ [19.1] RADAR
1.1 NM	4.4 NM	4.7 NM	3.8 NM	3.5 NM
CATEGORY	A	B	C	D
S-ILS 27L	1199/18		200 (200-1/2)	
S-LOC 27L	1420/24	421 (400-1/2)	1420/40	421 (400-3/4)
SIDESTEP 27R	1420-1 3/4	435 (400-1 3/4)	1420-2 1/4	435 (400-2 1/4)

SE-4, 31 JAN 2019 to 28 FEB 2019

SE-4, 31 JAN 2019 to 28 FEB 2019