

ATLANTA, GEORGIA

AL-26 (FAA)

# ILS PRM RWY 28

(SIMULTANEOUS CLOSE PARALLEL)  
HARTSFIELD-JACKSON ATLANTA INTL (ATL)

LOC/DME I-PKU <b>111.75</b> Chan <b>54 (Y)</b>	APP CRS <b>275°</b>	Rwy Idg TDZE Apt Elev	<b>9000</b> <b>998</b> <b>1026</b>
--	------------------------	-----------------------------	--

Simultaneous close parallel approach authorized with ILS PRM and RNAV PRM Rwy 26R or 26L or 27R or 27L or Rwy 26R and 27R, or Rwy 26R and 27L, or Rwy 26L and 27R, or Rwy 26L and 27L. Procedure not authorized when glideslope not available. Dual VHF comm required. See additional requirements on AAUP.



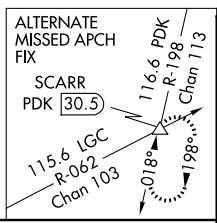
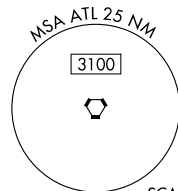
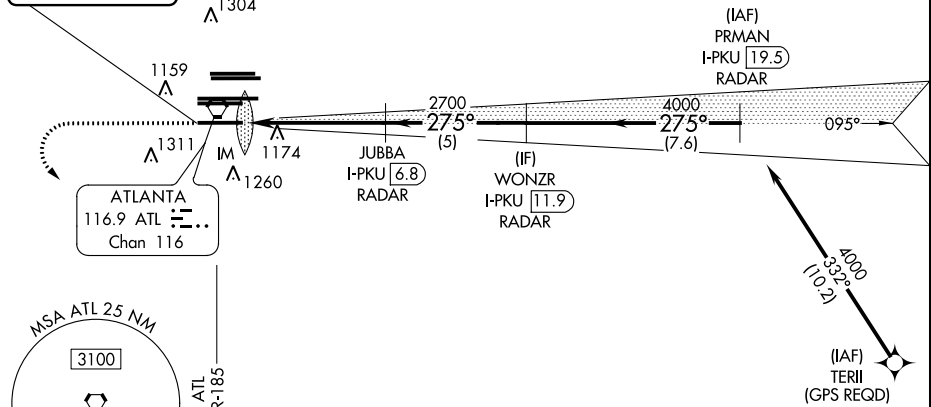
MISSED APPROACH: Climb to 1400 then climbing left turn to 3000 on ATL VORTAC R-185 to SCARR INT/ATL 15 DME and hold.

D-ATIS ARR <b>119.65</b> DEP <b>125.55</b>	ATLANTA APP CON <b>127.9 379.9</b>	ATLANTA TOWER 8L-26R 8R-26L 9L-27R 9R-27L 10-28 RWYS <b>119.1 125.325 123.85 119.3 119.5 254.4</b> PRM <b>133.425</b>	ALL RWYS <b>121.9 121.75 121.65 254.4</b>
--	---------------------------------------	--	--

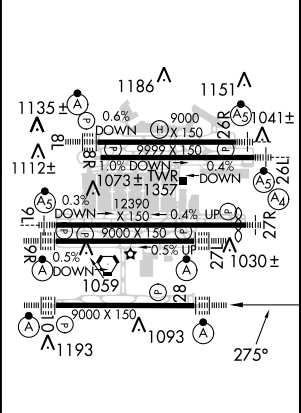
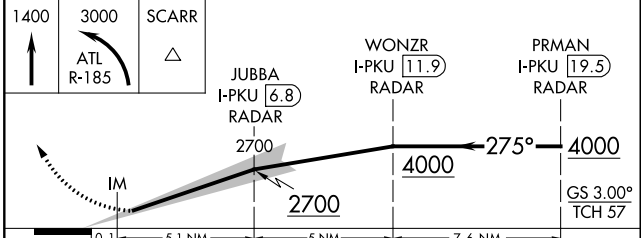
GPS or RADAR REQUIRED

CLNC DEL <b>118.1</b>	CPDLC
--------------------------	-------

LOCALIZER 111.75  
I-PKU  
Chan 54(Y)



ELEV 1026	TDZE 998
-----------	----------



CATEGORY	A	B	C	D
S-ILS 28	1198/18 200 (200-1/2)			

HIRL all Rwy's  
TDZ/CL Rwy's 8L, 9R,  
10, 26R, 27L and 28

SE-4, 31 JAN 2019 to 28 FEB 2019

SE-4, 31 JAN 2019 to 28 FEB 2019