

WAAS CH <b>65700</b> <b>W27A</b>	APP CRS <b>275°</b>	Rwy Idg TDZE Apt Elev	<b>8865</b> <b>999</b> <b>1026</b>
----------------------------------------	------------------------	-----------------------------	------------------------------------------

# RNAV (GPS) RWY 27L

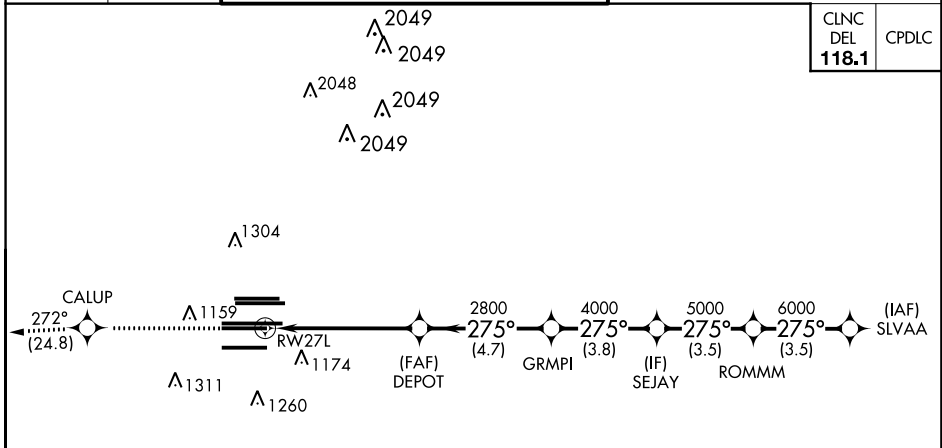
HARTSFIELD-JACKSON ATLANTA INTL (ATL)

▼ For uncompensated Baro-VNAV systems, LNAV/VNAV NA below -7°C (20°F) or above 54°C (130°F). DME/DME RNP-0.3 NA. Simultaneous approach authorized with Rwy 26R or 26L. LNAV procedure NA during simultaneous operations. Use of FD or AP providing RNAV track guidance required during simultaneous operations.

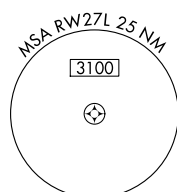
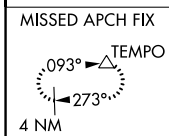


MISSED APPROACH: Climb to 4000 direct CALUP and on track 272° to TEMPO and hold.

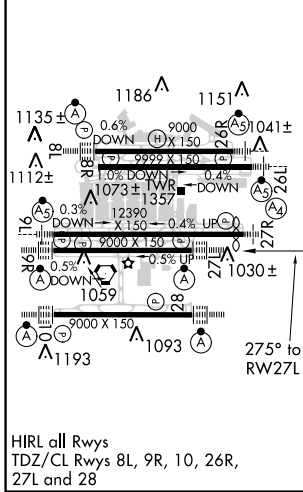
D-ATIS ARR <b>119.65</b>	ATLANTA APP CON <b>127.9 379.9</b>	ATLANTA TOWER				ALL RWYS	GND CON	ALL RWYS
DEP <b>125.55</b>		8L-26R	8R-26L	9L-27R	9R-27L	10-28	(8L-26R,8R-26L) (9L-27R,9R-27L)	10-28
		<b>119.1</b>	<b>125.325</b>	<b>123.85</b>	<b>119.3</b>	<b>119.5</b>	<b>121.9</b>	<b>121.75</b>
					<b>254.4</b>			<b>121.65</b>
								<b>254.4</b>



CLNC DEL	CPDLC
<b>118.1</b>	



ELEV 1026	<b>D</b>	TDZE 999
-----------	----------	----------



## RADAR REQUIRED

4000	CALUP	tr 272°	TEMPO	VGSI and RNAV glidepath not coincident (VGSI Angle 3.00/TCH 79).	SLVAA
					7000
*LNAV only					
		DEPOT	GRMPI	SEJAY	ROMMM
		2800	4000	5000	6000
		2800	2800	2800	2800
		1.7 NM	3.8 NM	4.7 NM	3.8 NM
		3.8 NM	3.5 NM	3.5 NM	3.5 NM
CATEGORY	A	B	C	D	
LPV DA	1199/18		200 (200-½)		
LNAV/VNAV DA	1528-1¾		529 (600-1¾)		
LNAV MDA	1620/24	621 (600-½)	1620-1¾	621 (600-1¾)	

SE-4, 31 JAN 2019 to 28 FEB 2019

SE-4, 31 JAN 2019 to 28 FEB 2019