


# RNAV (GPS) PRM Y RWY 26R (SIMULTANEOUS CLOSE PARALLEL) HARTSFIELD-JACKSON ATLANTA INTL (ATL)

WAAS CH <b>61000</b> <b>W26B</b>	APP CRS <b>275°</b>	Rwy Idg TDZE <b>990</b> Apt Elev <b>1026</b>
--	------------------------	--

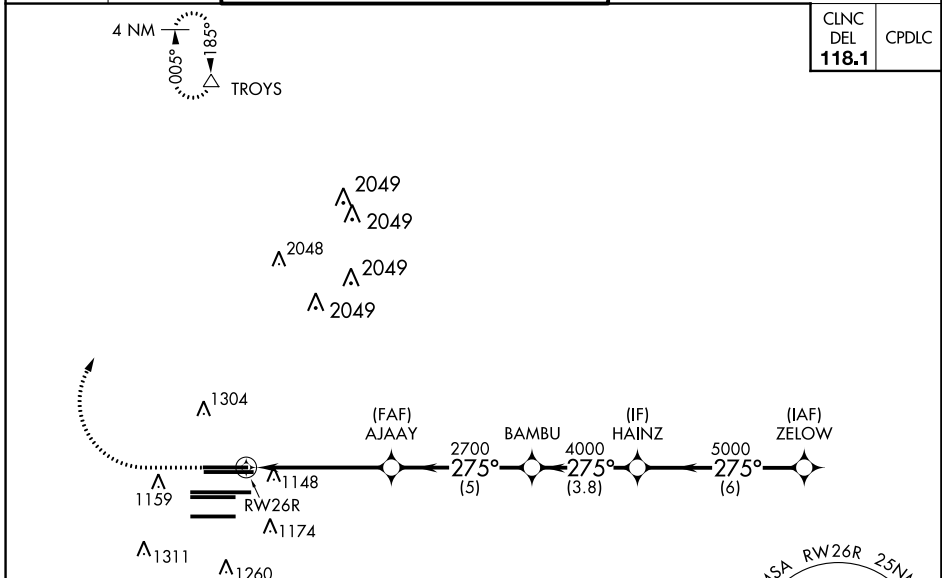
▼ For uncorrected Baro-VNAV systems, LNAV/VNAV NA below -7°C (20°F) or above 54°C (130°F). DME/DME RNP-0.3 NA. Simultaneous close parallel approach authorized with ILS PRM and RNAV PRM RWY 27R or 27L or 28, or Rwy 27R and 28, or Rwy 27L and 28. Use of FD or AP providing RNAV track guidance required during simultaneous operations. Dual VHF comm required. See additional requirements on AAUP.

**MALSR**



**MISSED APPROACH:** Climb to 1500 then climbing right turn to 3500 direct TROYS and hold.

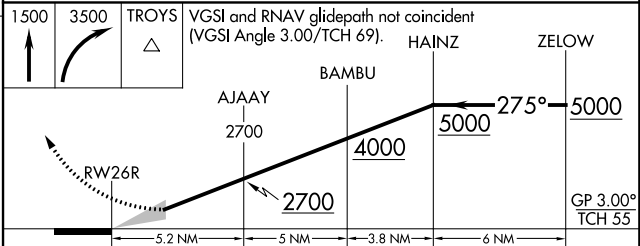
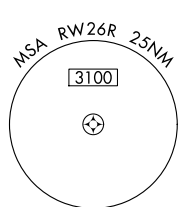
D-ATIS ARR <b>119.65</b> DEP <b>125.55</b>	ATLANTA APP CON <b>127.9 379.9</b>	ATLANTA TOWER 8L-26R 8R-26L <b>119.1 125.325</b> 9L-27R 9R-27L <b>123.85 119.3</b> 10-28 RWYS <b>119.5 254.4</b> <b>PRM 126.9</b>	ALL RWYS <b>121.9</b>	GND CON (8L-26R,8R-26L) (9L-27R,9R-27L) 10-28 RWYS <b>121.75 121.65 254.4</b>
--	--	---	-----------------------------	---



CLNC DEL <b>118.1</b>	CPDLC
-----------------------------	-------

ELEV 1026	<b>D</b>	TDZE 990
-----------	----------	----------

## RADAR REQUIRED



CATEGORY	A	B	C	D
LPV DA		1190/18	200 (200-½)	
LNAV/VNAV DA		1426/50	436 (500-1)	

# RNAV (GPS) PRM Y RWY 26R (SIMULTANEOUS CLOSE PARALLEL)

SE-4, 31 JAN 2019 to 28 FEB 2019

SE-4, 31 JAN 2019 to 28 FEB 2019