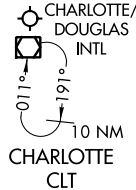


BANKR TWO ARRIVAL(RNAV)

CHARLOTTE ARR D-ATIS
121.15
CHARLOTTE APP CON
135.6 377.15

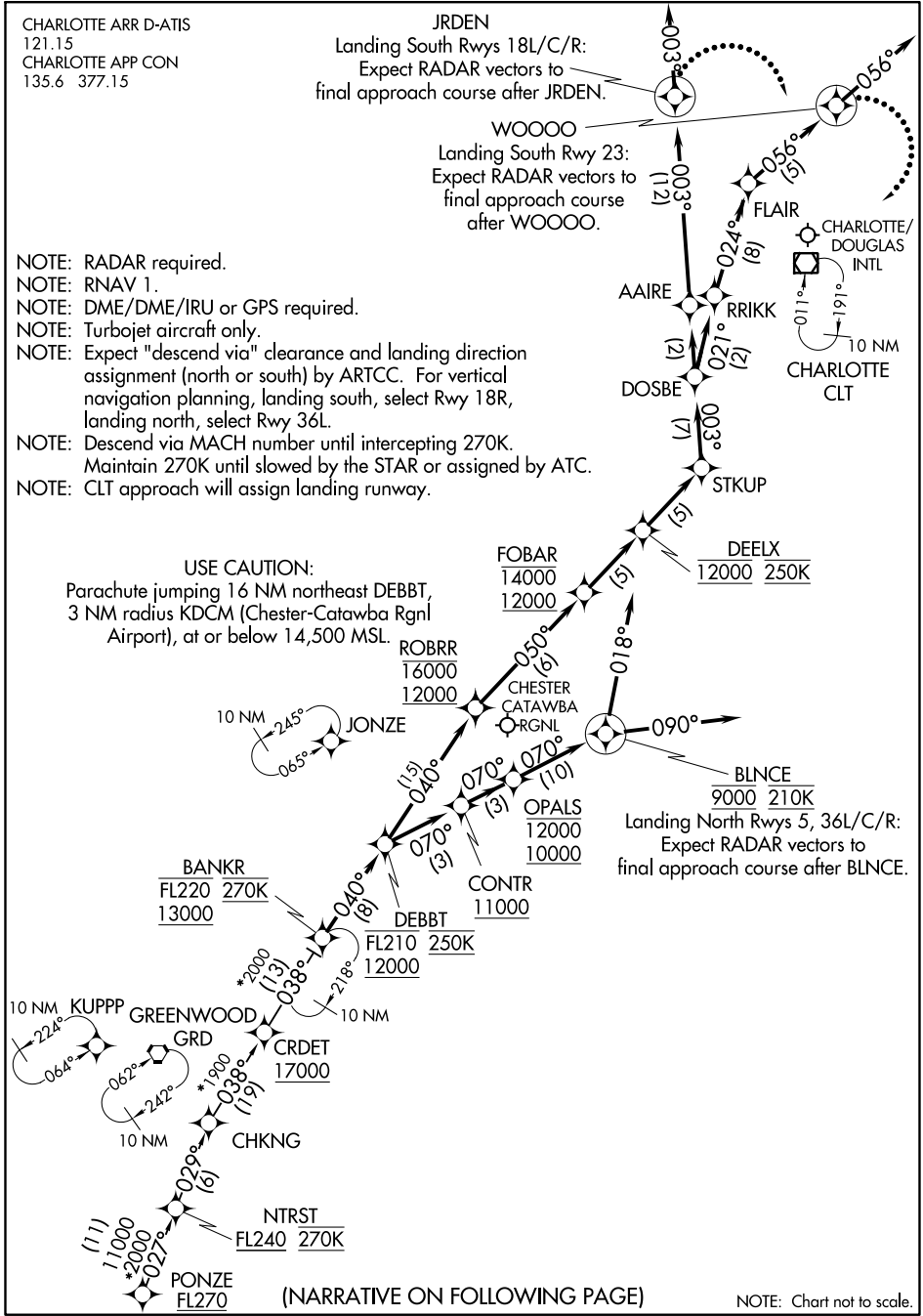
JRDEN
Landing South Rwy 18L/C/R:
Expect RADAR vectors to
final approach course after JRDEN.

WOOOO
Landing South Rwy 23:
Expect RADAR vectors to
final approach course
after WOOOO.



- NOTE: RADAR required.
- NOTE: RNAV 1.
- NOTE: DME/DME/IRU or GPS required.
- NOTE: Turbojet aircraft only.
- NOTE: Expect "descend via" clearance and landing direction assignment (north or south) by ARTCC. For vertical navigation planning, landing south, select Rwy 18R, landing north, select Rwy 36L.
- NOTE: Descend via MACH number until intercepting 270K. Maintain 270K until slowed by the STAR or assigned by ATC.
- NOTE: CLT approach will assign landing runway.

USE CAUTION:
Parachute jumping 16 NM northeast DEBBT,
3 NM radius KDCM (Chester-Catawba Rgnl
Airport), at or below 14,500 MSL.



(NARRATIVE ON FOLLOWING PAGE)

NOTE: Chart not to scale.

BANKR TWO ARRIVAL(RNAV)

SE-2, 31 JAN 2019 to 28 FEB 2019

SE-2, 31 JAN 2019 to 28 FEB 2019