

ESTRR FOUR DEPARTURE (RNAV)

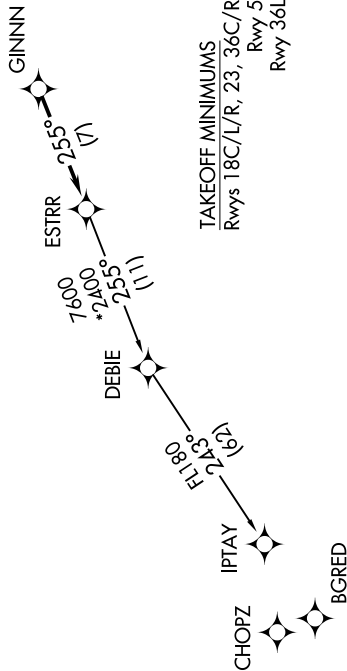
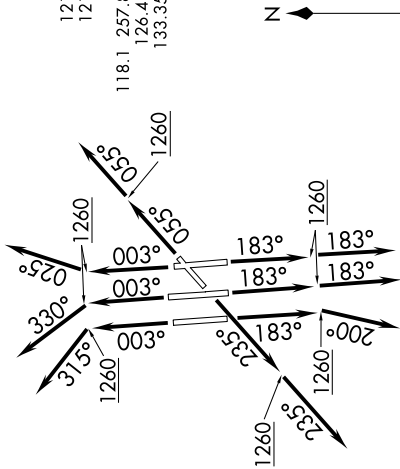
CHARLOTTE/DOUGLAS INTL (CLT)
CHARLOTTE, NORTH CAROLINA

SE-2, 31 JAN 2019 to 28 FEB 2019

TOP ALTITUDE:
8000

D-ATIS DEP 132.1
 CLNC DEL 127.15 348.6
 CPDLC
 GND CON
 121.8 348.6 (180°-359°)
 121.9 348.6 (360°-179°)
 CHARLOTTE TOWER
 118.1 257.8 (Rwys 18L-36R, 5-23)
 126.4 257.8 (Rwy 18C-36C)
 133.35 257.8 (Rwy 18R-36L)
 CHARLOTTE DEP CON
 120.5 257.2

- NOTE: For turbojets only.
- NOTE: DME/DME/IRU or GPS required.
- NOTE: RNAV 1.
- NOTE: RADAR required.
- NOTE: If unable to accept climb rates, advise ATC on initial contact.
- NOTE: Accelerate to 250K, if unable advise ATC. Upon reaching 10000 MSL, accelerate to and maintain 280K, if unable advise ATC.



TAKEOFF MINIMUMS
 Rwys 18C/L/R, 23, 36C/R: Standard with minimum climb of 500' per NM to 1260.
 Rwy 5: Standard with minimum climb of 500' per NM to 1300.
 Rwy 36L: Standard with minimum climb of 500' per NM to 1400.

(NARRATIVE ON FOLLOWING PAGE)

NOTE: Chart not to scale.

ESTRR FOUR DEPARTURE (RNAV)

SE-2, 31 JAN 2019 to 28 FEB 2019