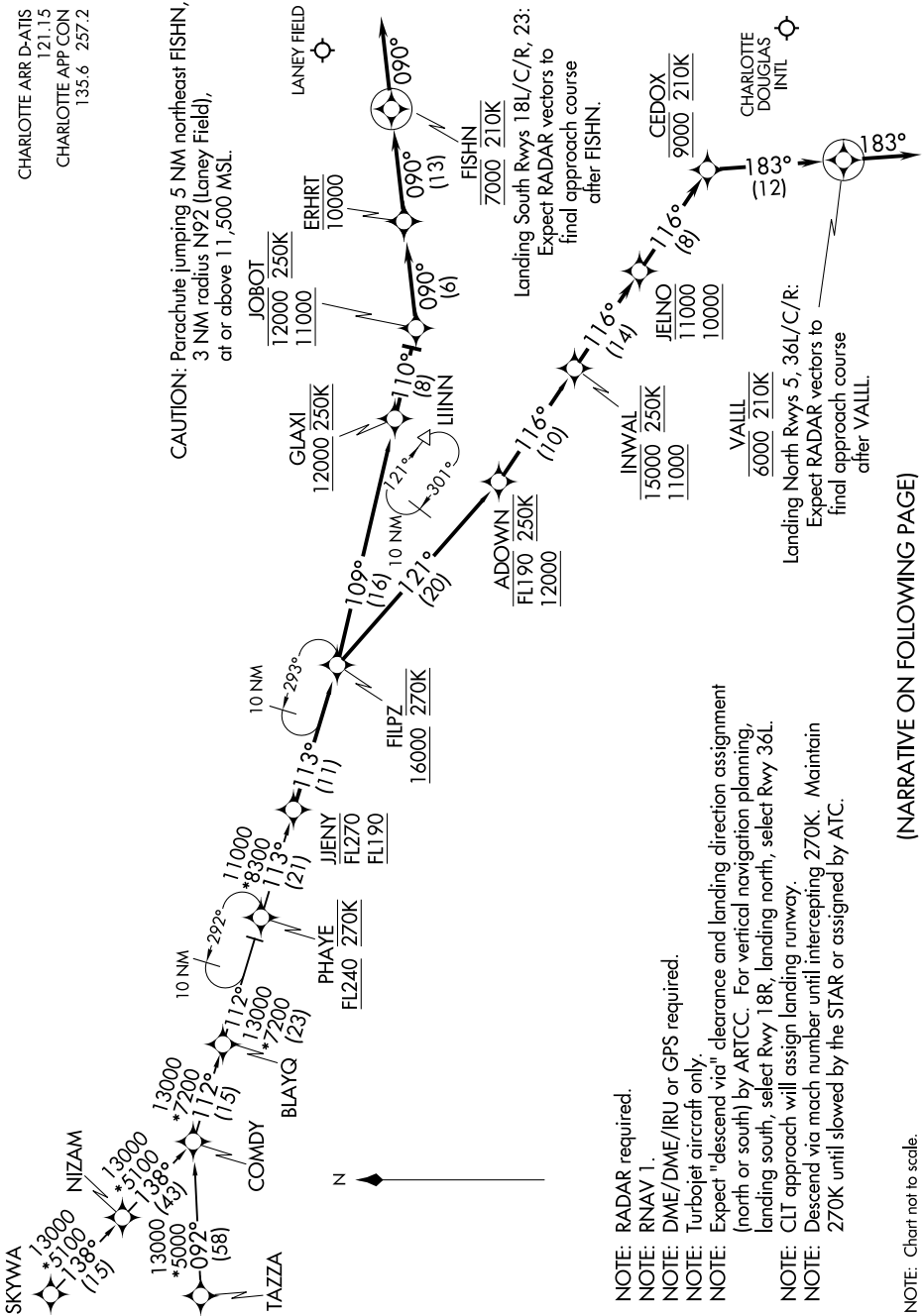


FILPZ THREE ARRIVAL (RNAV)

CHARLOTTE ARR D-ATIS
121.15
CHARLOTTE APP CON
135.6 257.2

CAUTION: Parachute jumping 5 NM northeast FISHN,
3 NM radius N92 (Laney Field),
at or above 11,500 MSL.



- NOTE: RADAR required.
- NOTE: RNAV 1.
- NOTE: DME/DME/IRU or GPS required.
- NOTE: Turbojet aircraft only.
- NOTE: Expect "descend via" clearance and landing direction assignment (north or south) by ARTCC. For vertical navigation planning, landing south, select Rwy 18R, landing north, select Rwy 36L.
- NOTE: CLT approach will assign landing runway.
- NOTE: Descend via mach number until intercepting 270K. Maintain 270K until slowed by the STAR or assigned by ATC.

Landing North Rwy 5, 36L/C/R:
Expect RADAR vectors to
final approach course
after VALL.

Landing South Rwy 18L/C/R, 23:
Expect RADAR vectors to
final approach course
after FISHN.

(NARRATIVE ON FOLLOWING PAGE)

NOTE: Chart not to scale.

FILPZ THREE ARRIVAL (RNAV)