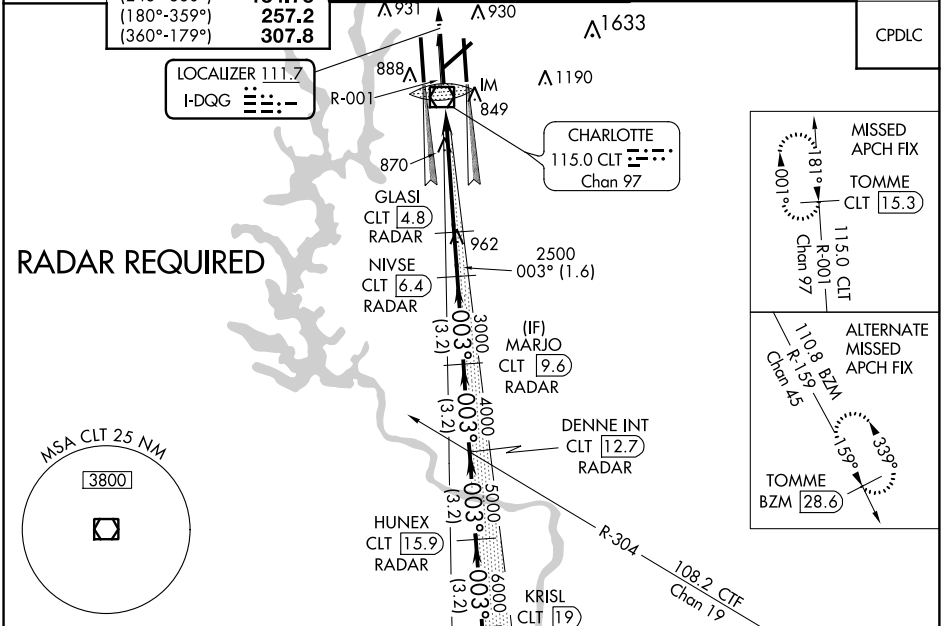


LOC I-DQG <b>111.7</b>	APP CRS <b>003°</b>	Rwy Idg <b>10000</b>
		TDZE <b>707</b>
		Apt Elev <b>748</b>

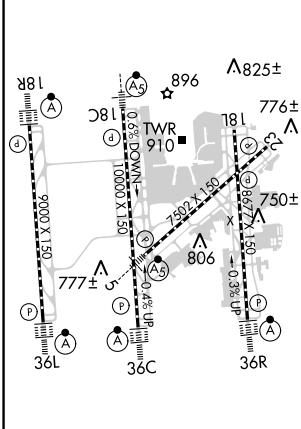
# ILS RWY 36C (CAT II & III)

CHARLOTTE/DOUGLAS INTL (CLT)

<p>Simultaneous approach authorized. DME or RADAR required. DQG ILS LLZ Rwy 36C unusable for rollout guidance.</p>		<p>ALSF-2</p>	<p>MISSED APPROACH: Climb to 3000 via CLT R-001 to TOMME/CLT 15.3 DME and hold.</p>	
D-ATIS ARR <b>121.15</b> DEP <b>132.1</b>	CHARLOTTE APP CON (001°-119°) <b>128.32</b> (120°-245°) <b>120.05</b> (246°-360°) <b>134.75</b> (180°-359°) <b>257.2</b> (360°-179°) <b>307.8</b>	CHARLOTTE TOWER (Rwys 18L-36R, 5-23) <b>118.1 257.8</b> (Rwy 18C-36C) <b>126.4 257.8</b> (Rwy 18R-36L) <b>133.35 257.8</b>	GND CON (180°-359°) <b>121.8 348.6</b> (360°-179°) <b>121.9 348.6</b>	CLNC DEL <b>127.15</b> <b>348.6</b>



ELEV 748	<b>D</b>	TDZE 707
----------	----------	----------



3000	CLT R-001	TOMME CLT 15.3	VGSI and ILS glidepath not coincident (VGSI Angle 3.00/TCH 72).		SOLMN CLT 22.2	
8000	IM 809	GLASI CLT 4.8	NIVSE CLT 6.4	MARJO CLT 9.6	DENNE INT CLT 12.7	
5000					HUNEX CLT 19	
6000					KRISL CLT 19	
7000					SOLMN CLT 22.2	
8000						
					GS 3.00° TCH 57	
	-9.60'	-5.4 NM	-1.6 NM	-3.2 NM	-3.2 NM	-3.2 NM
CATEGORY	A	B	C	D		
S-ILS 36C	CAT II		RA 126/12	100	DA 807	
S-ILS 36C			CAT IIIa	RVR 07		
S-ILS 36C			CAT IIIb	RVR 07		
S-ILS 36C			CAT IIIc	NA		

## CATEGORY II & III ILS - SPECIAL AIRCREW & AIRCRAFT CERTIFICATION REQUIRED

SE-2, 31 JAN 2019 to 28 FEB 2019

SE-2, 31 JAN 2019 to 28 FEB 2019