

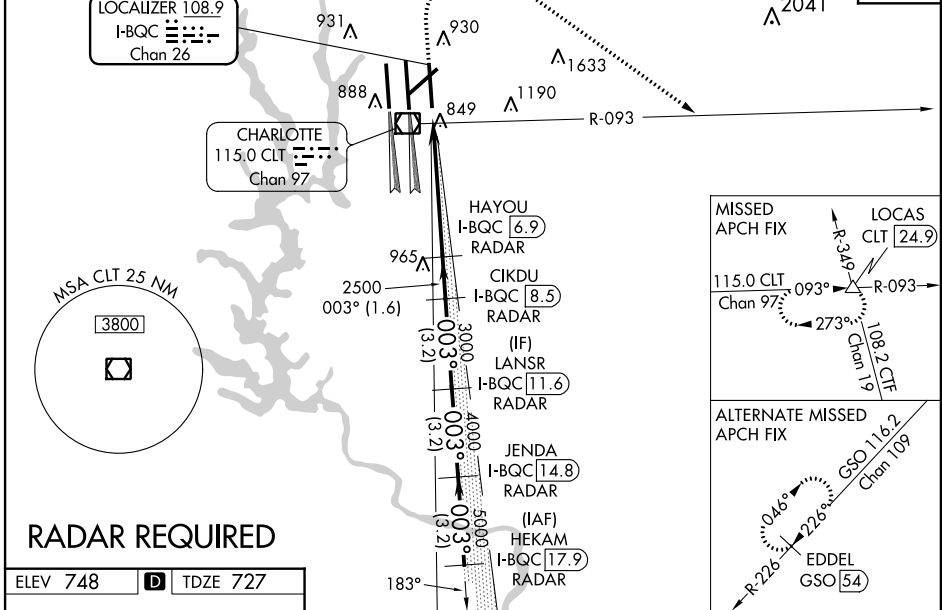
LOC/DME I-BQC <b>108.9</b> Chan 26	APP CRS <b>003°</b>	Rwy Idg TDZE Apt Elev	<b>8390</b> <b>727</b> <b>748</b>
--	------------------------	-----------------------------	---

# ILS RWY 36R (CAT II & III)

CHARLOTTE/DOUGLAS INTL (CLT)

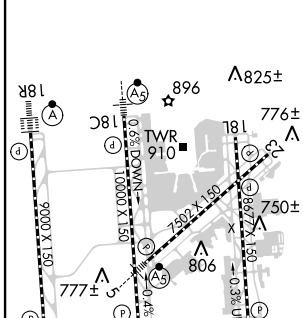
	ALS-F-2 	MISSED APPROACH: Climb to 1320 then climbing right turn to 4000 on CLT VOR/DME R-093 to LOCAS INT/24.9 DME and hold.
--	-------------	--

D-ATIS	CHARLOTTE APP CON	CHARLOTTE TOWER	GND CON	CLNC DEL
ARR <b>121.15</b> DEP <b>132.1</b>	(001°-119°) <b>128.32</b> (120°-245°) <b>120.05</b> (246°-360°) <b>134.75</b> (180°-359°) <b>257.2</b> (360°-179°) <b>307.8</b>	(Rwys 18L-36R, 5-23) <b>118.1 257.8</b> (Rwy 18C-36C) <b>126.4 257.8</b> (Rwy 18R-36L) <b>133.35 257.8</b>	(180°-359°) <b>121.8 348.6</b> (360°-179°) <b>121.9 348.6</b>	<b>127.15</b> <b>348.6</b>

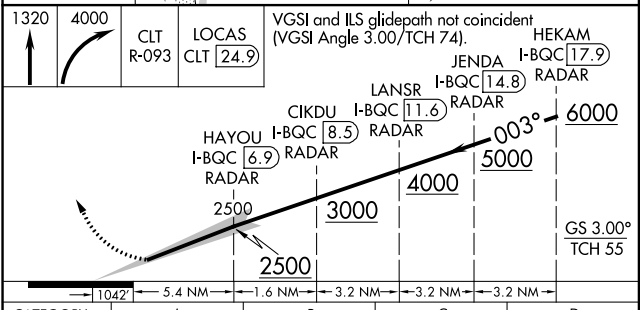


## RADAR REQUIRED

ELEV 748	<b>D</b>	TDZE 727
----------	----------	----------



HIRL all Rwys  
REIL Rwys 18L and 23  
TDZ/CL Rwys 18R, 36L, 36C and 36R



CATEGORY	A	B	C	D
S-ILS 36R	CAT II RA 119/12 100 DA 827			
S-ILS 36R	CAT IIIa RVR 06			
S-ILS 36R	CAT IIIb NA			
S-ILS 36R	CAT IIIc NA			

## CATEGORY II & III ILS SPECIAL AIRCREW & AIRCRAFT CERTIFICATION REQUIRED

SE-2, 31 JAN 2019 to 28 FEB 2019

SE-2, 31 JAN 2019 to 28 FEB 2019