

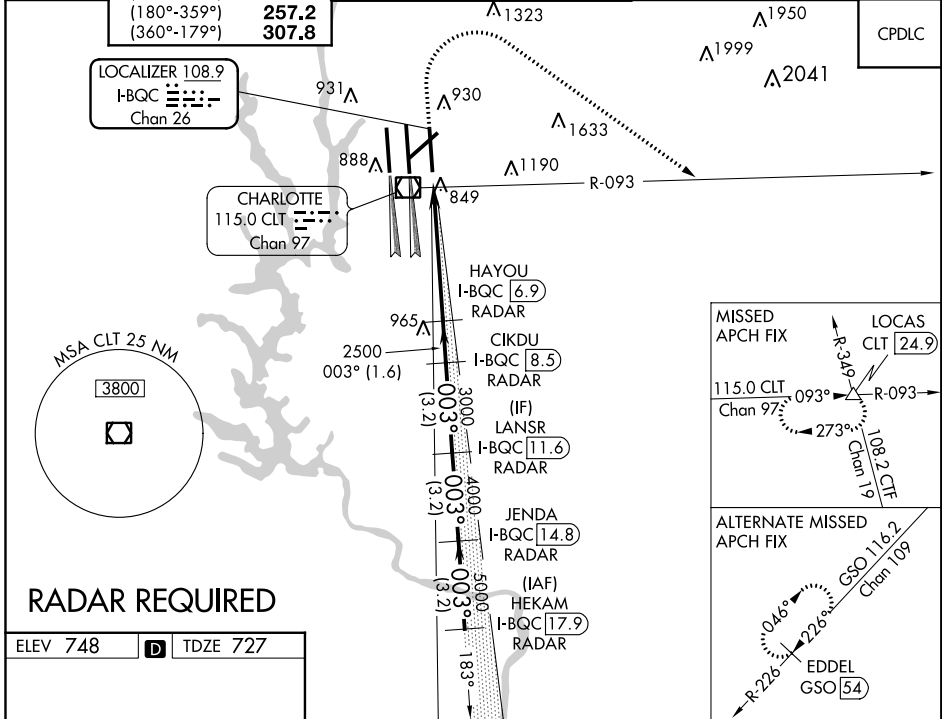
LOC/DME I-BQC <b>108.9</b> Chan 26	APP CRS <b>003°</b>	Rwy Idg TDZE <b>727</b> Apt Elev <b>748</b>	<b>8390</b>
--	------------------------	---	-------------

# ILS RWY 36R (SA CAT I)

## CHARLOTTE/DOUGLAS INTL (CLT)

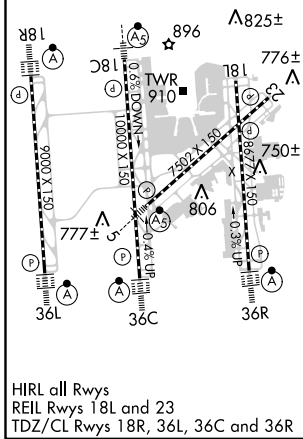
Simultaneous approach authorized.  
 DME or RADAR required. Requires specific OPSPEC, MSPEC or LOA approval and use of HUD to DH.  
 ALSF-2  
 MISSED APPROACH: Climb to 1320 then climbing right turn to 4000 on CLT VOR/DME R-093 to LOCAS INT/24.9 DME and hold.

D-ATIS ARR <b>121.15</b> DEP <b>132.1</b>	CHARLOTTE APP CON <b>128.32</b> (001°-119°) <b>120.05</b> (120°-245°) <b>134.75</b> (246°-360°) <b>257.2</b> (180°-359°) <b>307.8</b> (360°-179°)	CHARLOTTE TOWER (Rwys 18L-36R, 5-23) <b>118.1</b> <b>257.8</b> (Rwy 18C-36C) <b>126.4</b> <b>257.8</b> (Rwy 18R-36L) <b>133.35</b> <b>257.8</b>	GND CON (180°-359°) <b>121.8</b> <b>348.6</b> (360°-179°) <b>121.9</b> <b>348.6</b>	CLNC DEL <b>127.15</b> <b>348.6</b>
---	---	--	---	---



SE-2, 31 JAN 2019 to 28 FEB 2019

SE-2, 31 JAN 2019 to 28 FEB 2019



CATEGORY	A	B	C	D
S-ILS 36R	RA 173/14 150 DA 877			

### SA CATEGORY I ILS SPECIAL AIRCREW & AIRCRAFT CERTIFICATION REQUIRED