

LOC/DME I-VKQ 110.35 Chan 40(Y)	APP CRS 183°	Rwy Idg TDZE Apt Elev 8676 748 748
--	------------------------	--

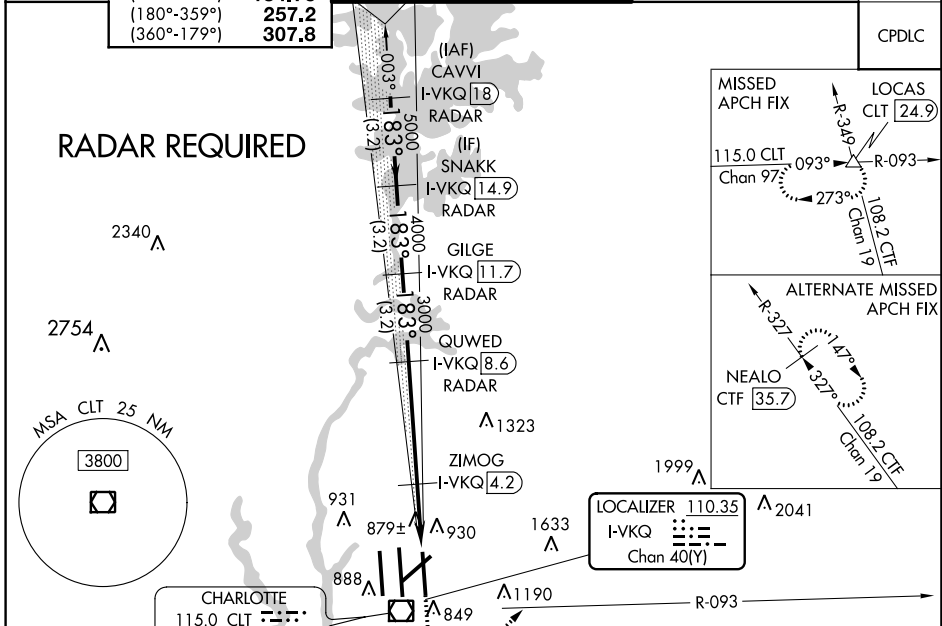
ILS or LOC RWY 18L

CHARLOTTE/DOUGLAS INTL (CLT)

⚠ Circling NA at night. Simultaneous approach authorized.
⚠ DME or RADAR required. Rwy 18L helicopter visibility reduction below 3/4 SM NA.

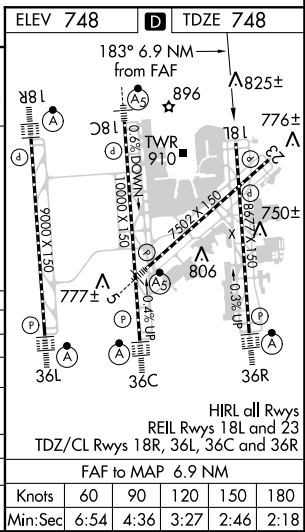
MISSED APPROACH: Climb to 1300 then climbing left turn to 4000 on CLT VOR/DME R-093 to LOCAS INT/CLT 24.9 DME and hold.

D-ATIS	CHARLOTTE APP CON	CHARLOTTE TOWER	GND CON	CLNC DEL
ARR 121.15	(001°-119°) 128.32	(Rwys 18L-36R, 5-23) 118.1 257.8	(180°-359°) 121.8 348.6	127.15
DEP 132.1	(120°-245°) 120.05	(Rwy 18C-36C) 126.4 257.8	(360°-179°) 121.9 348.6	348.6
	(246°-360°) 134.75	(Rwy 18R-36L) 133.35 257.8		
	(180°-359°) 257.2			
	(360°-179°) 307.8			



VGSI and ILS glidepath not coincident (VSGI Angle 3.00/TCH 76).

CATEGORY	1300		4000	
	A	B	C	D
S-ILS 18L	998/40 250 (300-3/4)			
S-LOC 18L	1320/55	572 (600-1)	1320-1 5/8	572 (600-1 5/8)
C CIRCLING	1380-1	632 (700-1)	1500-2 1/4	1500-2 1/2
			752 (800-2 1/4)	752 (800-2 1/2)
ZIMOG FIX MINIMUMS (DME REQUIRED)				
S-LOC 18L	1140/55	392 (400-1)	1140/60	392 (400-1 1/4)
C CIRCLING	1380-1	632 (700-1)	1500-2 1/4	1500-2 1/2
			752 (800-2 1/4)	752 (800-2 1/2)



SE-2, 31 JAN 2019 to 28 FEB 2019

SE-2, 31 JAN 2019 to 28 FEB 2019