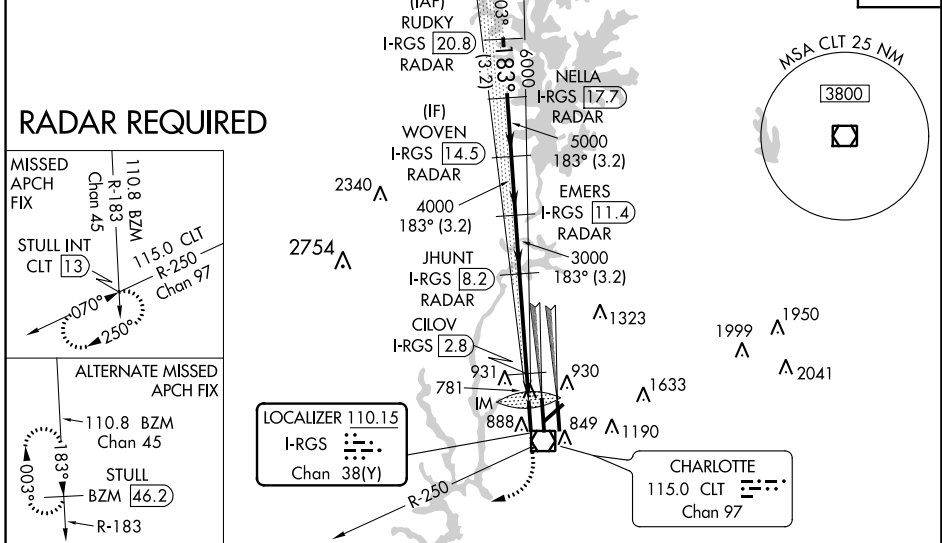


LOC/DME I-RGS 110.15 Chan 38(Y)	APP CRS 183°	Rwy Idg 9000 TDZE 744 Apt Elev 748
---	------------------------	---

ILS or LOC RWY 18R

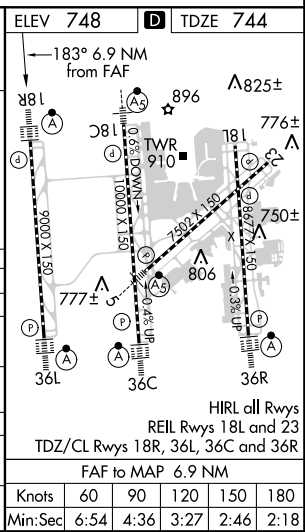
CHARLOTTE/DOUGLAS INTL (CLT)

D-ATIS ARR 121.15 DEP 132.1	CHARLOTTE APP CON (001°-119°) 128.32 (120°-245°) 120.05 (246°-360°) 134.75 (180°-359°) 257.2 (360°-179°) 307.8	CHARLOTTE TOWER (Rwys 18L-36R, 5-23) 118.1 257.8 (Rwy 18C-36C) 126.4 257.8 (Rwy 18R-36L) 133.35 257.8		GND CON (180°-359°) 121.8 348.6 (360°-179°) 121.9 348.6	CLNC DEL 127.15 348.6
		CPDLC			



VGSI and ILS glidepath not coincident (VGSI Angle 2.80/TCH 65).

RUDKY I-RGS 20.8 RADAR NELLA I-RGS 17.7 RADAR WOVEN I-RGS 14.5 RADAR EMERS I-RGS 11.4 RADAR JHUNT I-RGS 8.2 RADAR CILOV I-RGS 2.8 IM I-RGS 2.1 I-RGS 1.3	1200 4000 STULL INT CLT R-250 *LOC only
7000 183° 6000 5000 4000 3000 3000 *1280 GS 3.00° TCH 55 3.2 NM 3.2 NM 3.2 NM 3.2 NM 3.4 NM 0.7 0.7 0.1	*LOC only *I-RGS 2.1 I-RGS 1.3
CATEGORY S-ILS 18R S-LOC 18R CIRCLING	A B C D 944/18 200 (200-½) 1280/24 536 (600-½) 1280/55 536 (600-1) 1380-1 632 (700-1) 1500-2¼ 752 (800-2¼) 1500-2½ 752 (800-2½)
CILOV FIX MINIMUMS (DME REQUIRED)	
S-LOC 18R CIRCLING	1040/24 296 (300-½) 1380-1 632 (700-1) 1500-2¼ 752 (800-2¼) 1500-2½ 752 (800-2½)



SE-2, 31 JAN 2019 to 28 FEB 2019

SE-2, 31 JAN 2019 to 28 FEB 2019