

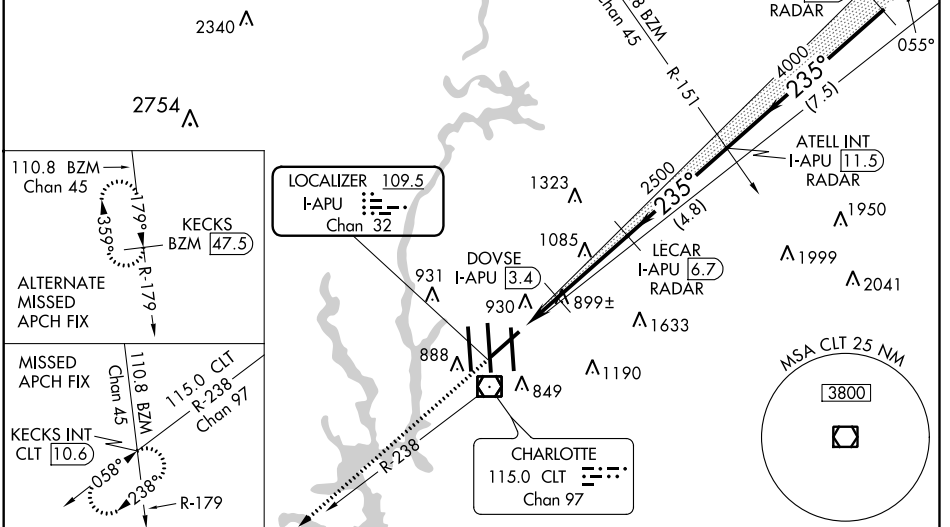
LOC/DME I-APU 109.5 Chan 32	APP CRS 235°	Rwy Idg TDZE Apt Elev 7502 747 748
---	------------------------	--

ILS or LOC RWY 23

CHARLOTTE/DOUGLAS INTL (CLT)

<p>▽ Circling NA at night. ▲ DME or RADAR required.</p>		<p>MISSED APPROACH: Climb to 4000 via heading 235° and CLT R-238 to KECKS INT/CLT 10.6 DME and hold, continue climb-in-hold to 4000.</p>		
D-ATIS ARR 121.15 DEP 132.1	CHARLOTTE APP CON (001°-119°) 128.32 (120°-245°) 120.05 (246°-360°) 134.75 (180°-359°) 257.2 (360°-179°) 307.8	CHARLOTTE TOWER (Rwys 18L-36R, 5-23) 118.1 257.8 (Rwy 18C-36C) 126.4 257.8 (Rwy 18R-36L) 133.35 257.8	GND CON (180°-359°) 121.8 348.6 (360°-179°) 121.9 348.6	CLNC DEL 127.15 348.6

RADAR REQUIRED



ELEV 748	D	TDZE 747	4000	CLT R-238	KECKS INT	VGSI and ILS glidepath not coincident (VGSI Angle 3.00/TCH 54).	JEPHS I-APU 18.9 RADAR
235° 5.3 NM from FAF		hdg 235°		* LOC only		ATELL INT I-APU 11.5 RADAR	
825±		I-APU 1.5		* I-APU 2.6		LECAR I-APU 6.7 RADAR	
776±		I-APU 2.6		DOVSE I-APU 3.4		ATELL INT I-APU 11.5 RADAR	
750±		I-APU 3.4		2500		6000	
750±		I-APU 4.8		4000		GS unusable below 1100.	
750±		I-APU 6.7		2500		GS 3.00° TCH 58	
750±		I-APU 11.5		4.8 NM		7.5 NM	
750±		I-APU 18.9		1.1 NM		0.8 NM	
750±		I-APU 18.9		CATEGORY		A B C D	
750±		I-APU 18.9		S-ILS 23		1100-1¼ 353 (400-1¼)	
750±		I-APU 18.9		S-LOC 23		1400/50 653 (700-1) 1400-1¾ 653 (700-1¾) 1400-2 653 (700-2)	
750±		I-APU 18.9		C CIRCLING		1400-1 652 (700-1) 1500-2¼ 752 (800-2¼) 1500-2½ 752 (800-2½)	
750±		I-APU 18.9		DOVSE FIX MINIMUMS			
750±		I-APU 18.9		S-LOC 23		1160/50 413 (500-1) 1160/60 413 (500-1¼)	
750±		I-APU 18.9		C CIRCLING		1380-1 632 (700-1) 1500-2¼ 752 (800-2¼) 1500-2½ 752 (800-2½)	

SE-2, 31 JAN 2019 to 28 FEB 2019

SE-2, 31 JAN 2019 to 28 FEB 2019