

LOC/DME I-XUU <b>110.15</b> Chan 38(Y)	APP CRS <b>003°</b>	Rwy Idg TDZE <b>9000</b> <b>744</b> Apt Elev <b>748</b>
--	------------------------	---

# ILS or LOC RWY 36L

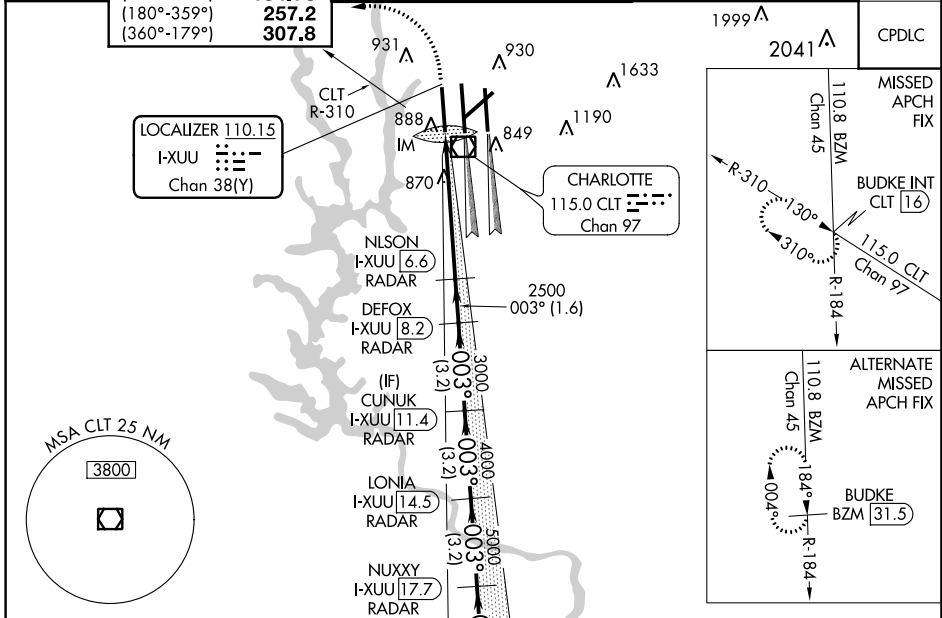
CHARLOTTE/DOUGLAS INTL (CLT)

**⚠** Circling NA at night. Simultaneous approach authorized.  
**⚠** DME or RADAR required.

ALSF-2

MISSED APPROACH: Climb to 1200 then climbing left turn to 4000 on CLT VOR/DME R-310 to BUDKE/CLT 16 DME and hold.

D-ATIS ARR <b>121.15</b> DEP <b>132.1</b>	CHARLOTTE APP CON (001°-119°) <b>128.32</b> (120°-245°) <b>120.05</b> (246°-360°) <b>134.75</b> (180°-359°) <b>257.2</b> (360°-179°) <b>307.8</b>	CHARLOTTE TOWER (Rwys 18L-36R, 5-23) <b>118.1</b> <b>257.8</b> (Rwy 18C-36C) <b>126.4</b> <b>257.8</b> (Rwy 18R-36L) <b>133.35</b> <b>257.8</b>	GND CON (180°-359°) <b>121.8</b> <b>348.6</b> (360°-179°) <b>121.9</b> <b>348.6</b>	CLNC DEL <b>127.15</b> <b>348.6</b>
---	--	--	---	---



ELEV 748	<b>D</b>	TDZE 744			
HIRL all Rws REIL Rws 18L and 23 TDZ/CL Rws 18R, 36L, 36C and 36R					
FAF to MAP 5.3 NM					
Knots	60	90	120	150	180
Min:Sec	5:18	3:32	2:39	2:07	1:46

1200	4000	CLT R-310	BUDKE INT	WELET I-XUU [20.8] RADAR
*LOC only.				
I-XUU [1.3]	*I-XUU [2.5]	NLSN I-XUU [6.6] RADAR	DEFOX I-XUU [8.2] RADAR	CUNUK I-XUU [11.4] RADAR
IM	2500	2500	4000	5000
0.1	1.1 NM	4.1 NM	1.6 NM	3.2 NM
3.2 NM	3.2 NM	3.2 NM	3.2 NM	7000
GS 3.00° TCH 55'				
CATEGORY	A		B	
S-ILS 36L	944/18 200 (200-½)			
S-LOC 36L	1180/24 436 (500-½)		1180/40 436 (500-¾)	
<b>C</b> CIRCLING	1380-1 632 (700-1)		1500-2¼ 752 (800-2¼)	
			1500-2½ 752 (800-2½)	

SE-2. 31 JAN 2019 to 28 FEB 2019

SE-2. 31 JAN 2019 to 28 FEB 2019