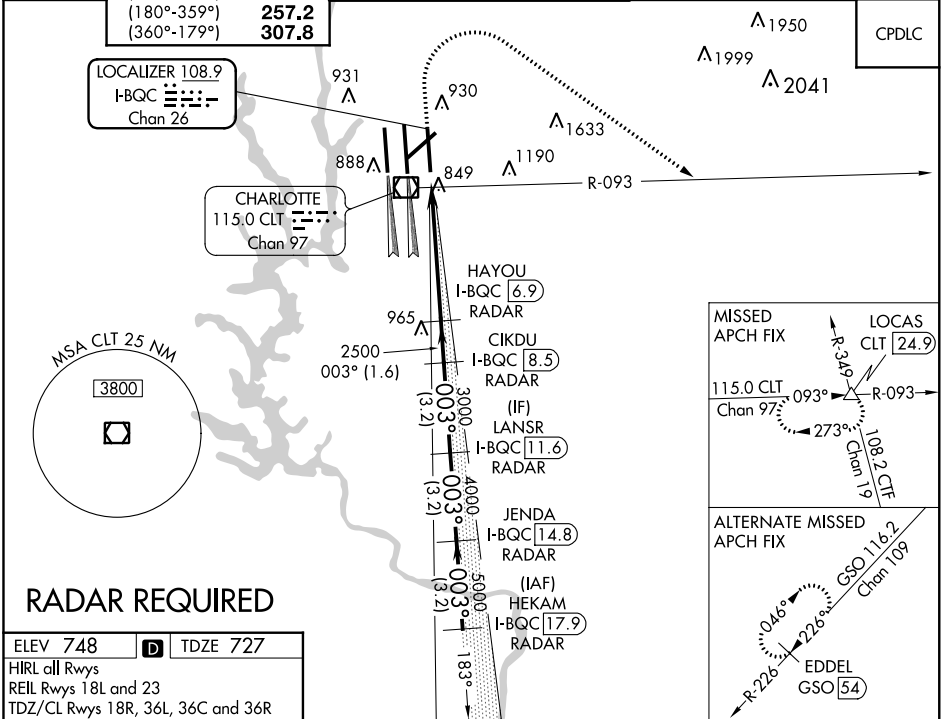


LOC/DME I-BQC 108.9 Chan 26	APP CRS 003°	Rwy Idg TDZE Apt Elev	8390 727 748
--	------------------------	-----------------------------	---

ILS or LOC RWY 36R

CHARLOTTE/DOUGLAS INTL (CLT)

<p>⚠ Circling NA at night. Simultaneous approach authorized. DME or RADAR required.</p>	<p>ALS-F-2</p>	<p>MISSED APPROACH: Climb to 1320 then climbing right turn to 4000 on CLT VOR/DME R-093 to LOCAS INT/24.9 DME and hold.</p>		
	<p>D-ATIS ARR 121.15 DEP 132.1</p>	<p>CHARLOTTE APP CON (001°-119°) 128.32 (120°-245°) 120.05 (246°-360°) 134.75 (180°-359°) 257.2 (360°-179°) 307.8</p>	<p>CHARLOTTE TOWER (Rwys 18L-36R, 5-23) 118.1 257.8 (Rwy 18C-36C) 126.4 257.8 (Rwy 18R-36L) 133.35 257.8</p>	<p>GND CON (180°-359°) 121.8 348.6 (360°-179°) 121.9 348.6</p>



ELEV 748	D	TDZE 727			
HIRL all Rwys					
REIL Rwys 18L and 23					
TDZ/CL Rwys 18R, 36L, 36C and 36R					
FAF to MAP 5.4 NM					
Knots	60	90	120	150	180
Min:Sec	5:24	3:36	2:42	2:10	1:48

<p>1320 4000 CLT LOCAS</p> <p>R-093 CLT [24.9]</p> <p>VGSI and ILS glidepath not coincident (VGSI Angle 3.00/TCH 74).</p> <p>HEKAM JENDA I-BQC [17.9] RADAR</p> <p>LANSR I-BQC [14.8] RADAR</p> <p>CIKDU I-BQC [11.6] RADAR</p> <p>HAYOU I-BQC [8.5] RADAR</p> <p>I-BQC [6.9] RADAR</p> <p>I-BQC [1.5] *I-BQC [2.5] 2500 3000 4000 5000 6000</p> <p>GS 3.00° TCH 55</p>	<p>1 NM</p>	4.4 NM	1.6 NM	3.2 NM	3.2 NM	3.2 NM
CATEGORY	A	B	C	D		
S-ILS 36R	927/18		200 (200-½)			
S-LOC 36R	1120/24	393 (400-½)	1120/35	393 (400-¾)		
C CIRCLING	1380-1	632 (700-1)	1500-2¼ 752 (800-2¼)	1500-2½ 752 (800-2½)		

SE-2, 31 JAN 2019 to 28 FEB 2019

SE-2, 31 JAN 2019 to 28 FEB 2019