

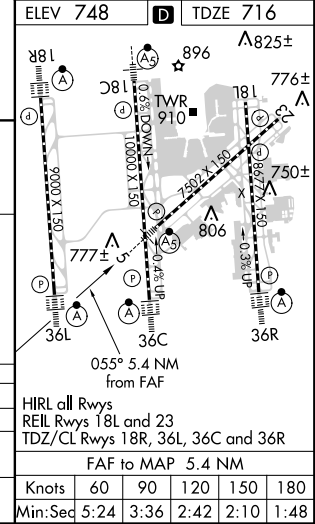
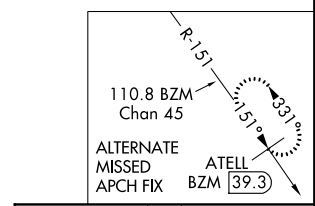
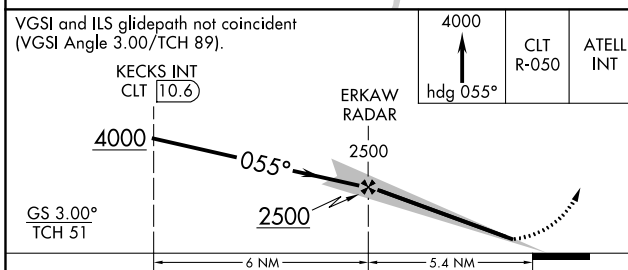
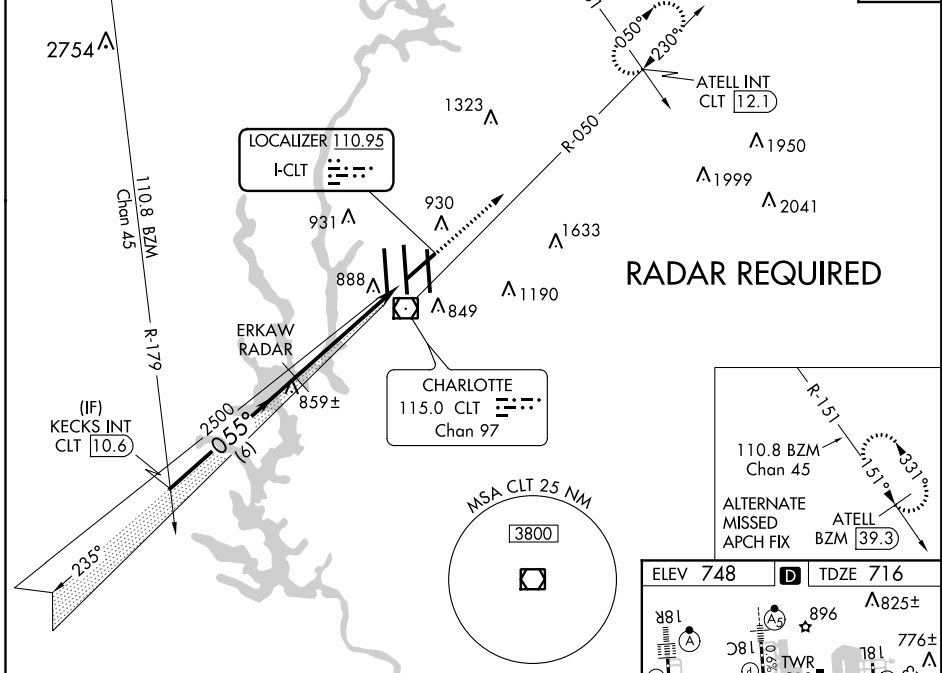
LOC I-CLT 110.95	APP CRS 055°	Rwy Idg TDZE Apt Elev	7092 716 748
----------------------------	------------------------	-----------------------------	---

ILS or LOC RWY 5

CHARLOTTE/DOUGLAS INTL (CLT)

<p>▼ Circling NA at night. RADAR required. * RVR 1800 authorized with use of FD or AP or HUD to DA.</p>	<p>MALS R </p>	<p>MISSED APPROACH: Climb to 4000 via heading 055° and CLT VOR/DME R-050 to ATELL INT/CLT 12.1 DME and hold, continue climb-in-hold to 4000.</p>
--	--------------------	--

D-ATIS ARR 121.15 DEP 132.1	CHARLOTTE APP CON (001°-119°) 128.32 (120°-245°) 120.05 (246°-360°) 134.75 (180°-359°) 257.2 (360°-179°) 307.8	CHARLOTTE TOWER (Rwys 18L-36R, 5-23) 118.1 257.8 (Rwy 18C-36C) 126.4 257.8 (Rwy 18R-36L) 133.35 257.8	GND CON (180°-359°) 121.8 348.6 (360°-179°) 121.9 348.6	CLNC DEL 127.15 348.6
---	--	---	---	---



CATEGORY	A	B	C	D
S-ILS 5	* 916/24		200 (200-1/2)	
S-LOC 5	1120/24	404 (400-1/2)	1120/40	404 (400-3/4)
C CIRCLING	1380-1	632 (700-1)	1500-2 1/4	1500-2 1/2
			752 (800-2 1/4)	752 (800-2 1/2)

SE-2, 31 JAN 2019 to 28 FEB 2019

SE-2, 31 JAN 2019 to 28 FEB 2019

Knots	60	90	120	150	180
Min:Seg	5:24	3:36	2:42	2:10	1:48