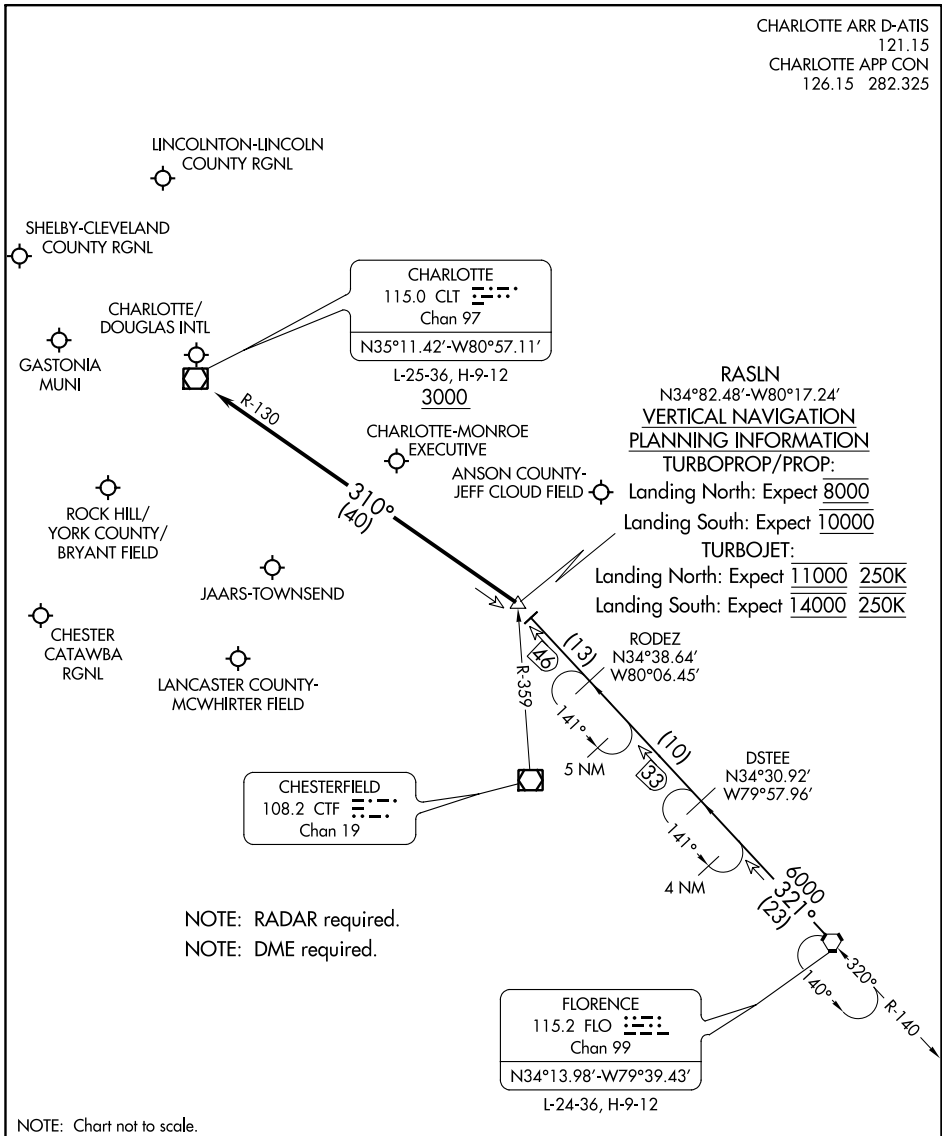


CHARLOTTE ARR D-ATIS  
 121.15  
 CHARLOTTE APP CON  
 126.15 282.325



SE-2, 31 JAN 2019 to 28 FEB 2019

SE-2, 31 JAN 2019 to 28 FEB 2019

**ARRIVAL ROUTE DESCRIPTION**

FLORENCE TRANSITION (FLO.RASLN3): From over FLO VORTAC on FLO R-321 to RASLN INT. Thence . . . .  
 . . . . from RASLN on CLT R-130 to cross CLT VOR/DME at or above 3000. Expect RADAR vectors to destination airport or final approach course prior to CLT VOR/DME.