


APP CRS	Rwy Idg <b>10000</b>
<b>183°</b>	TDZE <b>742</b>
	Apt Elev <b>748</b>

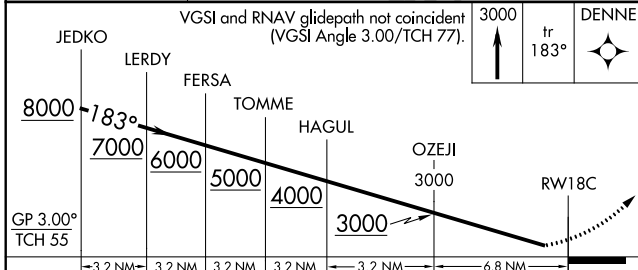
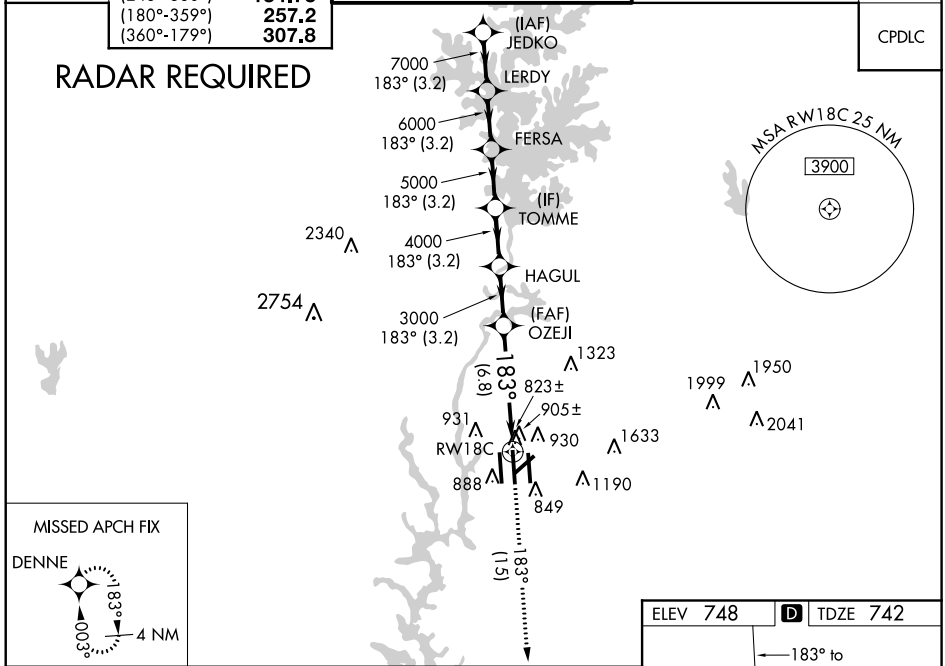
# RNAV (RNP) Z RWY 18C

CHARLOTTE/DOUGLAS INTL (CLT)

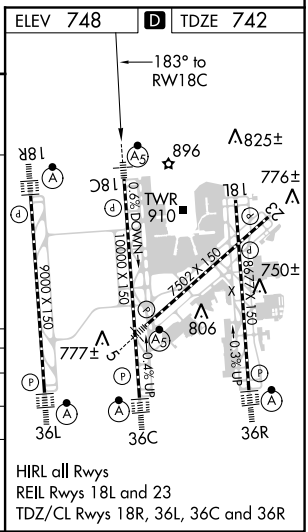
**GPS required.** For inop MALSRL, increase RNP 0.11 visibility all Cats to RVR 5000 and RNP 0.30 visibility all Cats to 1½ mile. For uncompensated Baro-VNAV systems, procedure NA below -10°C (14°F) or above 47°C (117°F). Simultaneous approach authorized. Use of FD or AP required during simultaneous operations.

**MALSRL**  **MISSED APPROACH:** Climb to 3000 on track 183° to DENNE and hold.

D-ATIS	CHARLOTTE APP CON	CHARLOTTE TOWER	GND CON	CLNC DEL
ARR <b>121.15</b>	(001°-119°) <b>128.32</b>	(Rwys 18L-36R, 5-23) <b>118.1 257.8</b>	(180°-359°) <b>121.8 348.6</b>	<b>127.15</b>
DEP <b>132.1</b>	(120°-245°) <b>120.05</b>	(Rwy 18C-36C) <b>126.4 257.8</b>	(360°-179°) <b>121.9 348.6</b>	<b>348.6</b>
	(246°-360°) <b>134.75</b>	(Rwy 18R-36L) <b>133.35 257.8</b>		
	(180°-359°) <b>257.2</b>			
	(360°-179°) <b>307.8</b>			



CATEGORY	A	B	C	D
RNP 0.11 DA	1054/40		312 (400-34)	
RNP 0.30 DA	1175/50		433 (500-1)	



**AUTHORIZATION REQUIRED**

HIRL all Rwys  
REIL Rwys 18L and 23  
TDZ/CL Rwys 18R, 36L, 36C and 36R

SE-2, 31 JAN 2019 to 28 FEB 2019

SE-2, 31 JAN 2019 to 28 FEB 2019