

APP CRS 236°	Rwy Idg 7502
	TDZE 747
	Apt Elev 748

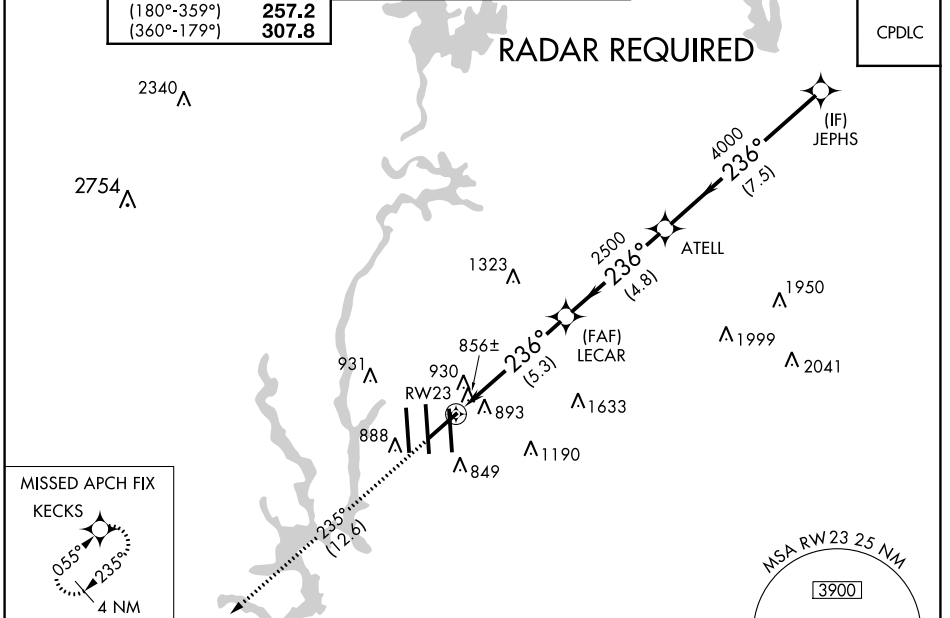
RNAV (RNP) Z RWY 23

CHARLOTTE/DOUGLAS INTL (CLT)

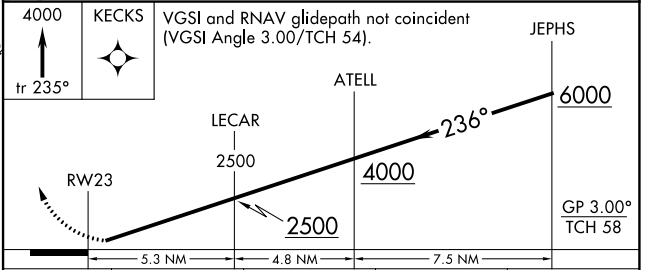
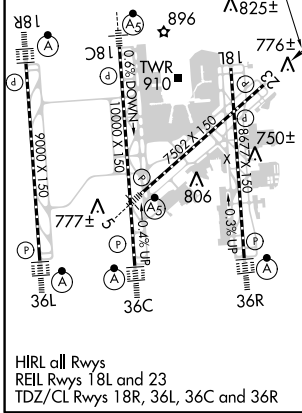
GPS required. For uncompensated Baro-VNAV systems, procedure NA below -10°C (14°F) or above 47°C (117°F). Visibility reduction by helicopters NA.

MISSED APPROACH: Climb to 4000 via track 235° to KECKS and hold, continue climb-in-hold to 4000.

D-ATIS ARR 121.15 DEP 132.1	CHARLOTTE APP CON (001°-119°) 128.32 (120°-245°) 120.05 (246°-360°) 134.75 (180°-359°) 257.2 (360°-179°) 307.8	CHARLOTTE TOWER (Rwys 18L-36R, 5-23) 118.1 257.8 (Rwy 18C-36C) 126.4 257.8 (Rwy 18R-36L) 133.35 257.8	GND CON (180°-359°) 121.8 348.6 (360°-179°) 121.9 348.6	CLNC DEL 127.15 348.6
---	--	---	---	---



ELEV 748	D	TDZE 747
-----------------	----------	-----------------



CATEGORY	A	B	C	D
RNP 0.11 DA		1091/60	344 (400-1¼)	
RNP 0.30 DA		1219-1½	472 (500-1½)	

AUTHORIZATION REQUIRED

SE-2, 31 JAN 2019 to 28 FEB 2019

SE-2, 31 JAN 2019 to 28 FEB 2019