

APP CRS	Rwy Idg	<b>10000</b>
<b>003°</b>	TDZE	<b>707</b>
	Apt Elev	<b>748</b>

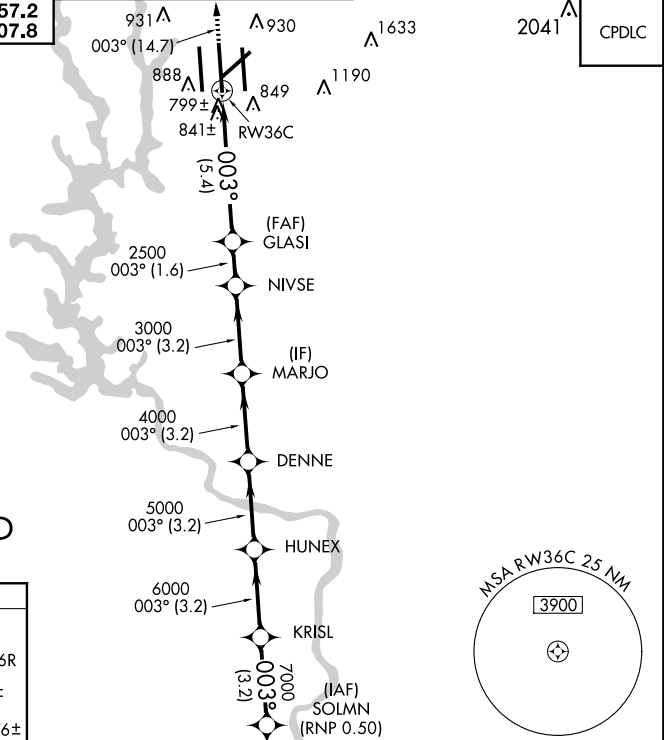
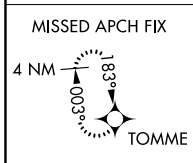
# RNAV (RNP) Z RWY 36C

CHARLOTTE/DOUGLAS INTL (CLT)

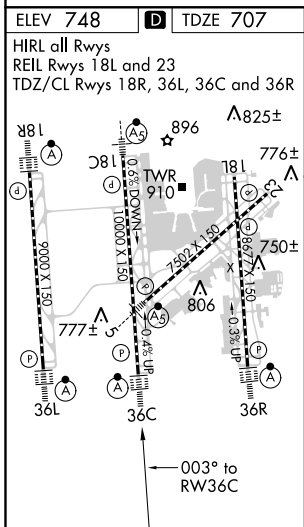
**▽** GPS required. For uncompensated Baro-VNAV systems, procedure NA below -10°C (14°F) or above 47°C (117°F). For inop ALSF, increase RNP 0.11 visibility all Cats to RVR 6000 and RNP 0.30 visibility all Cats to 1/2 mile. Simultaneous approach authorized. Use of FD or AP required during simultaneous operations.

ALSF-2 MISSED APPROACH: Climb to 3000 on track 003° to TOMME and hold.

D-ATIS	CHARLOTTE APP CON	CHARLOTTE TOWER	GND CON	CLNC DEL
ARR <b>121.15</b>	(001°-119°) <b>128.32</b>	(Rwys 18L-36R, 5-23) <b>118.1 257.8</b>	(180°-359°) <b>121.8 348.6</b>	<b>127.15</b>
DEP <b>132.1</b>	(120°-245°) <b>120.05</b>	(Rwy 18C-36C) <b>126.4 257.8</b>	(360°-179°) <b>121.9 348.6</b>	<b>348.6</b>
	(246°-360°) <b>134.75</b>	(Rwy 18R-36L) <b>133.35 257.8</b>		
	(180°-359°) <b>257.2</b>			
	(360°-179°) <b>307.8</b>			



**RADAR REQUIRED**



3000	tr	003°	TOMME	VGSI and RNAV glidepath not coincident (VGSI Angle 3.00/TCH 72).	SOLMN				
			GLASI	NIVSE	MARJO	DENNE	HUNEX	KRISL	8000
			2500	3000	4000	5000	6000	7000	GP 3.00° TCH 57
			5.4 NM	1.6 NM	3.2 NM	3.2 NM	3.2 NM	3.2 NM	3.2 NM
CATEGORY	A		B		C		D		
RNP 0.11 DA			1040/40		333 (300-¾)				
RNP 0.30 DA			1143/50		436 (400-1)				

**AUTHORIZATION REQUIRED**

SE-2, 31 JAN 2019 to 28 FEB 2019

SE-2, 31 JAN 2019 to 28 FEB 2019