


APP CRS	Rwy Idg	<b>7092</b>
<b>055°</b>	TDZE	<b>716</b>
	Apt Elev	<b>748</b>

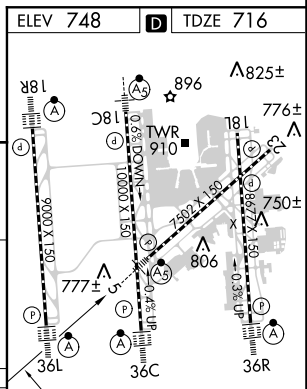
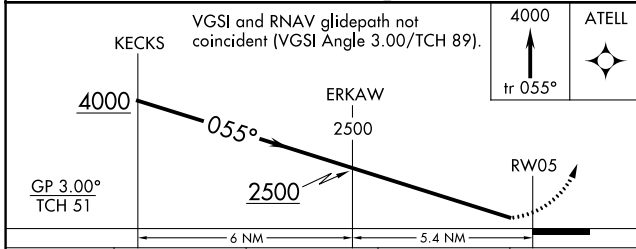
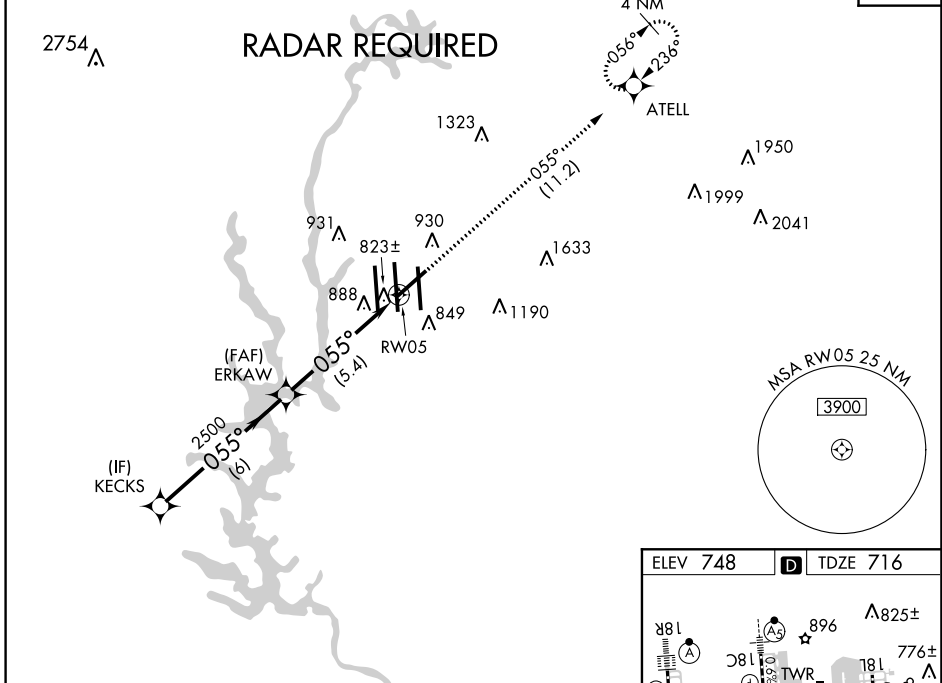
# RNAV (RNP) Z RWY 5

CHARLOTTE/DOUGLAS INTL (CLT)

▼ GPS required. For uncompensated Baro-VNAV systems, procedure NA below -10°C (14°F) or above 47°C (117°F). Rwy 5 helicopter visibility reduction below ¾ SM NA. For inop MALSR, increase RNP 0.11 all Cats visibility to RVR 6000 and RNP 0.30 all Cats visibility to 1¼ mile.

MALSR  MISSED APPROACH: Climb to 4000 via track 055° to ATELL and hold, continue climb-in-hold to 4000.

D-ATIS	CHARLOTTE APP CON	CHARLOTTE TOWER	GND CON	CLNC DEL
ARR <b>121.15</b>	(001°-119°) <b>128.32</b>	(Rwys 18L-36R, 5-23) <b>118.1 257.8</b>	(180°-359°) <b>121.8 348.6</b>	<b>127.15</b>
DEP <b>132.1</b>	(120°-245°) <b>120.05</b>	(Rwy 18C-36C) <b>126.4 257.8</b>	(360°-179°) <b>121.9 348.6</b>	<b>348.6</b>
	(246°-360°) <b>134.75</b>	(Rwy 18R-36L) <b>133.35 257.8</b>		
	(180°-359°) <b>257.2</b>			
	(360°-179°) <b>307.8</b>			



CATEGORY	A	B	C	D
RNP 0.11 DA		1061/40	345 (400-¾)	
RNP 0.30 DA		1216/60	500 (500-1¼)	

**AUTHORIZATION REQUIRED**

HIRL all Rwys  
REIL Rwys 18L and 23  
TDZ/CL Rwys 18R, 36L, 36C and 36R

SE-2, 31 JAN 2019 to 28 FEB 2019

SE-2, 31 JAN 2019 to 28 FEB 2019