

WAAS CH <b>77500</b> <b>W18A</b>	APP CRS <b>183°</b>	Rwy Idg TDZE Apt Elev	<b>8676</b> <b>748</b> <b>748</b>
--	------------------------	-----------------------------	---

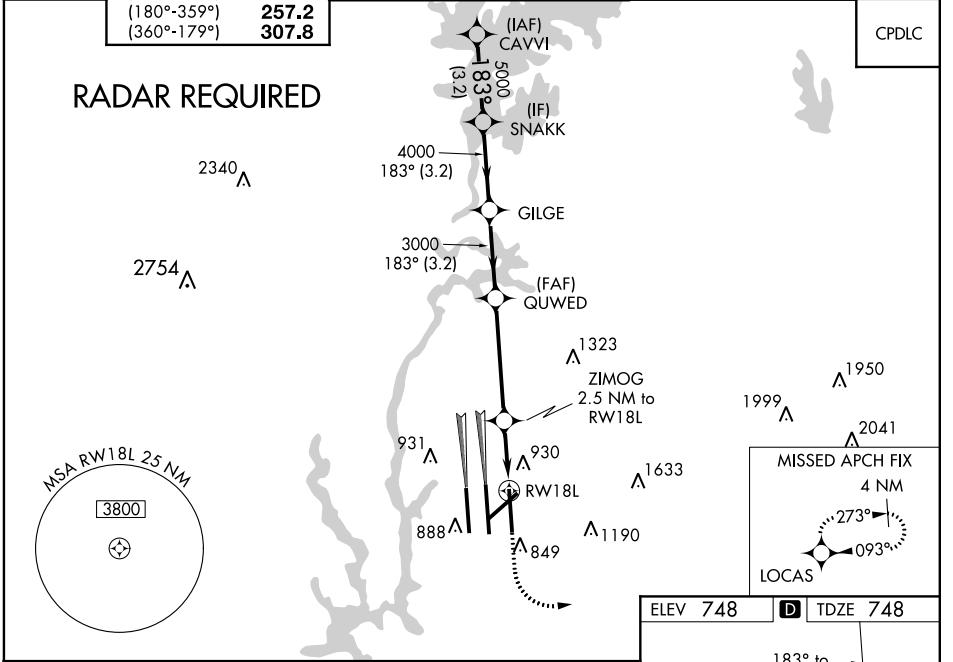
# RNAV (GPS) Y RWY 18L

CHARLOTTE/DOUGLAS INTL (CLT)

**⚠** Circling NA at night. For uncompensated Baro-VNAV systems, LNAV/VNAV NA below -10°C (14°F) or above 54°C (130°F). DME/DME RNP-0.3 NA. Simultaneous approach authorized. Use of FD or AP required during simultaneous operations. LNAV procedure NA during simultaneous operations. Rwy 18L helicopter visibility reduction below ¾ SM NA.

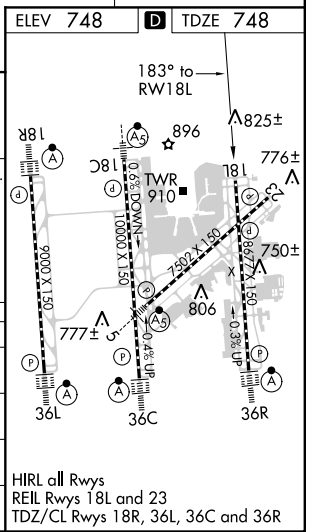
**MISSED APPROACH:**  
Climb to 1300 then climbing left turn to 4000 direct LOCAS and hold.

D-ATIS ARR <b>121.15</b> DEP <b>132.1</b>	CHARLOTTE APP CON (001°-119°) <b>128.32</b> (120°-245°) <b>120.05</b> (246°-360°) <b>134.75</b> (180°-359°) <b>257.2</b> (360°-179°) <b>307.8</b>	CHARLOTTE TOWER (Rwys 18L-36R, 5-23) <b>118.1 257.8</b> (Rwy 18C-36C) <b>126.4 257.8</b> (Rwy 18R-36L) <b>133.35 257.8</b>	GND CON (180°-359°) <b>121.8 348.6</b> (360°-179°) <b>121.9 348.6</b>	CLNC DEL <b>127.15</b> <b>348.6</b>
---	--	---	---	---



VGSI and RNAV glidepath not coincident (VGSI Angle 3.00/TCH 76).

CAVVI	SNAKK	GILGE	QUWED	ZIMOG	LOCAS
6000	5000	4000	3000	2.5 NM to RWY 18L	1300
GP 3.00°	183°			*1.1 NM to RWY 18L	
TCH 56			*1580		
	3.2 NM	3.2 NM	3.2 NM	4.4 NM	1.4 NM
CATEGORY	A	B	C	D	
LPV DA		998/40	250 (300-¾)		
LNAV/VNAV DA		1305-1 7/8	557 (600-1 7/8)		
LNAV MDA	1180/55	432 (500-1)	1180-1 ¼	432 (500-1 ¼)	
<b>C</b> CIRCLING	1380-1	632 (700-1)	1500-2 ¼	1500-2 ½	
			752 (800-2 ¼)	752 (800-2 ½)	



SE-2, 31 JAN 2019 to 28 FEB 2019

SE-2, 31 JAN 2019 to 28 FEB 2019