

WAAS CH <b>86200</b> <b>W36B</b>	APP CRS <b>003°</b>	Rwy Idg <b>10000</b> TDZE <b>707</b> Apt Elev <b>748</b>
--	------------------------	--

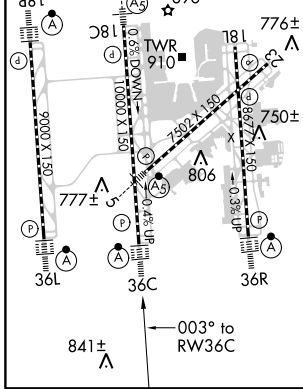
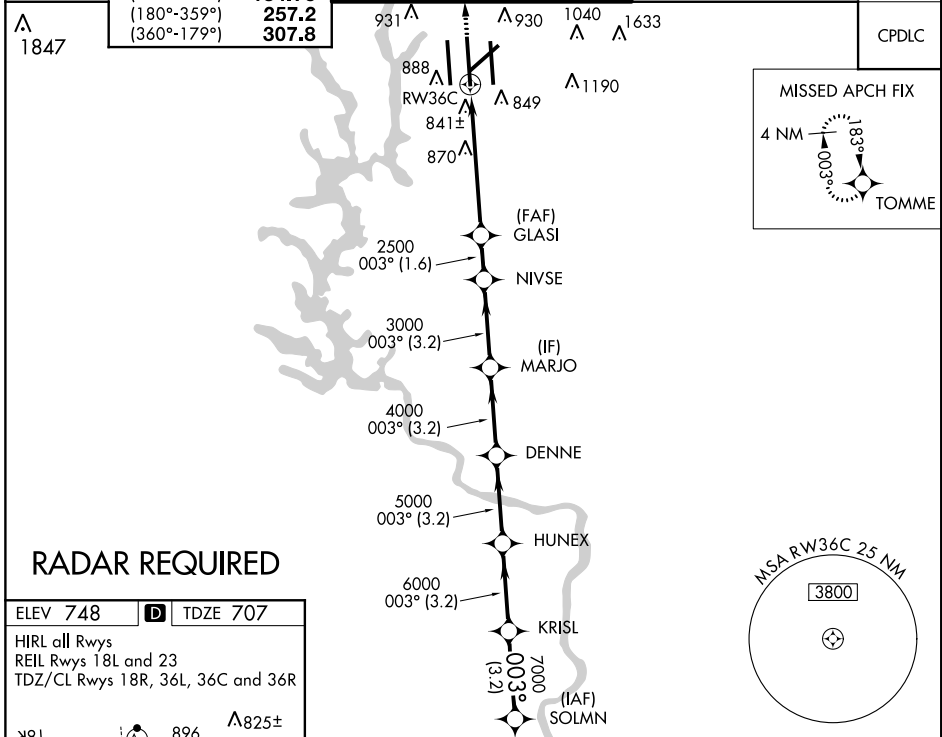
# RNAV (GPS) Y RWY 36C

CHARLOTTE/DOUGLAS INTL (CLT)

**▼** Circling NA at night. For uncompensated Baro-VNAV systems, LNAV/VNAV NA below -16°C (4°F) or above 47°C (116°F). DME/DME RNP-0.3 NA. Simultaneous approach authorized. LNAV procedure NA during simultaneous operations. Use of FD or AP required during simultaneous operations.

ALSF-2 	MISSED APPROACH: Climb to 3000 direct TOMME and hold.
------------	---

D-ATIS ARR <b>121.15</b> DEP <b>132.1</b>	CHARLOTTE APP CON (001°-119°) <b>128.32</b> (120°-245°) <b>120.05</b> (246°-360°) <b>134.75</b> (180°-359°) <b>257.2</b> (360°-179°) <b>307.8</b>	CHARLOTTE TOWER (Rwys 18L-36R, 5-23) <b>118.1 257.8</b> (Rwy 18C-36C) <b>126.4 257.8</b> (Rwy 18R-36L) <b>133.35 257.8</b>	GND CON (180°-359°) <b>121.8 348.6</b> (360°-179°) <b>121.9 348.6</b>	CLNC DEL <b>127.15</b> <b>348.6</b>
---	--	---	---	---



3000 TOMME	VGSI and RNAV glidepath not coincident (VGSI Angle 3.00/TCH 72).					SOLMN
	*LNAV only.					8000
	GLASI	NIVSE	MARJO	DENNE	HUNEX	KRISL
	2500	3000	4000	5000	6000	7000
	1.8	3.6	1.6	3.2	3.2	3.2
	1.8	3.6	1.6	3.2	3.2	3.2
CATEGORY	A	B	C	D		
LPV DA	907/18		200 (200-1/2)			
LNAV/VNAV DA	1229-1 3/8		522 (600-1 3/8)			
LNAV MDA	1320/40	628 (700-3/4)	1320-1 3/8	628 (700-1 3/8)		
<b>C</b> CIRCLING	1380-1	632 (700-1)	1500-2 1/4	752 (800-2 1/4)	1500-2 1/2	752 (800-2 1/2)

SE-2, 31 JAN 2019 to 28 FEB 2019

SE-2, 31 JAN 2019 to 28 FEB 2019