

WAAS CH <b>56515</b> <b>W36A</b>	APP CRS <b>003°</b>	Rwy Idg TDZE Apt Elev	<b>9000</b> <b>744</b> <b>748</b>
--	------------------------	-----------------------------	---

# RNAV (GPS) Y RWY 36L

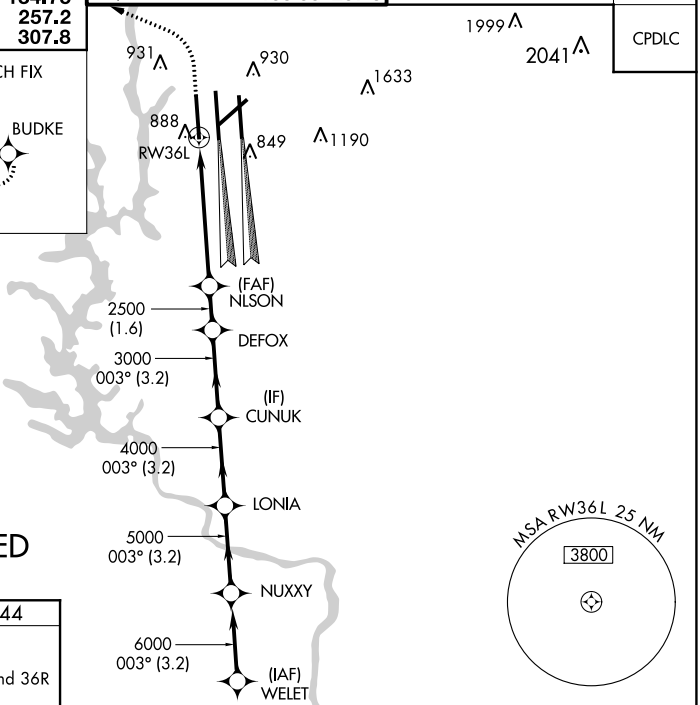
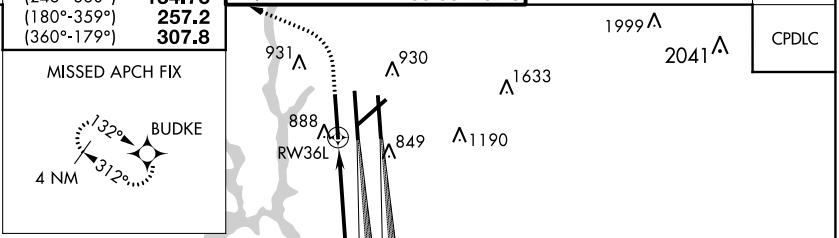
CHARLOTTE/DOUGLAS INTL (CLT)

**▼** Circling NA at night. For uncompensated Baro-VNAV systems, LNAV-VNAV NA below -10°C (14°F) or above 54°C (130°F). DME/DME RNP-0.3 NA. Simultaneous approach authorized. LNAV procedure NA during simultaneous operations. Use of FD or AP required during simultaneous operations.

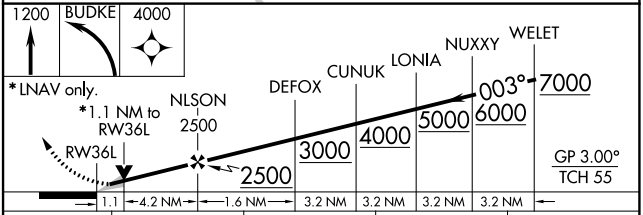
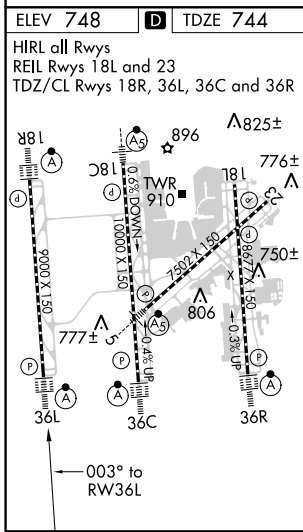
**ALSF-2**

**MISSED APPROACH:** Climb to 1200 then climbing left turn to 4000 direct BUDKE and hold.

D-ATIS ARR <b>121.15</b> DEP <b>132.1</b>	CHARLOTTE APP CON (001°-119°) <b>128.32</b> (120°-245°) <b>120.05</b> (246°-360°) <b>134.75</b> (180°-359°) <b>257.2</b> (360°-179°) <b>307.8</b>	CHARLOTTE TOWER (Rwys 18L-36R, 5-23) <b>118.1 257.8</b> (Rwy 18C-36C) <b>126.4 257.8</b> (Rwy 18R-36L) <b>133.35 257.8</b>	GND CON (180°-359°) <b>121.8 348.6</b> (360°-179°) <b>121.9 348.6</b>	CLNC DEL <b>127.15</b> <b>348.6</b>
---	--	---	---	---



## RADAR REQUIRED



CATEGORY	A	B	C	D
LPV DA		944/18	200 (200-½)	
LNAV/VNAV DA		1049/25	305 (400-½)	
LNAV MDA	1140/24	396 (400-½)	1140/35	396 (400-¾)
<b>C</b> CIRCLING	1380-1	632 (700-1)	1500-2¼ 752 (800-2¼)	1500-2½ 752 (800-2½)

SE-2, 31 JAN 2019 to 28 FEB 2019

SE-2, 31 JAN 2019 to 28 FEB 2019