

WAAS CH 90100 W36D	APP CRS 003°	Rwy Idg TDZE 727 Apt Elev 748	8390
--	------------------------	---	-------------

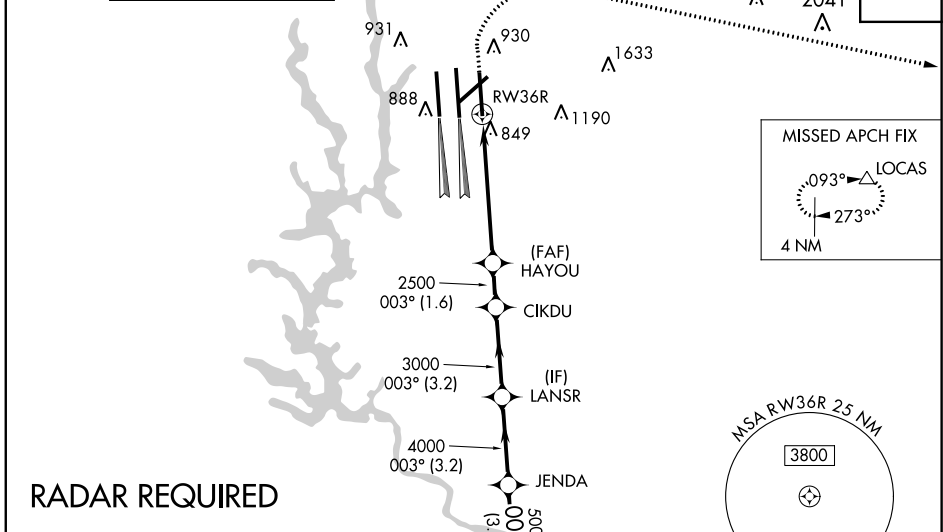
RNAV (GPS) Y RWY 36R

CHARLOTTE/DOUGLAS INTL (CLT)

⚠ Circling NA at night. For uncompensated Baro-VNAV systems, LNAV/VNAV NA below -10°C (14°F) or above 54°C (130°F). DME/DME RNP-0.3 NA. Simultaneous approach authorized. Use of FD or AP required during simultaneous operations. LNAV procedure NA during simultaneous operations. For inop ALSF, increase LNAV/VNAV all Cats visibility to 1½ mile.

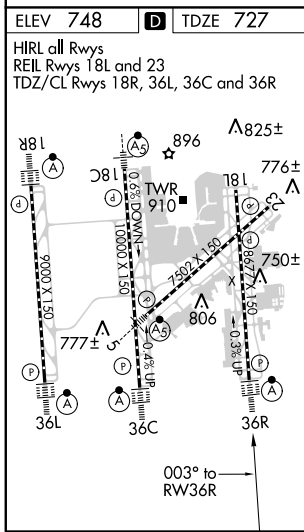
ALSF-2
MISSED APPROACH: Climb to 1320 then climbing right turn to 4000 direct LOCAS and hold.

D-ATIS ARR 121.15 DEP 132.1	CHARLOTTE APP CON (001°-119°) 128.32 (120°-245°) 120.05 (246°-360°) 134.75 (180°-359°) 257.2 (360°-179°) 307.8	CHARLOTTE TOWER (Rwys 18L-36R, 5-23) 118.1 257.8 (Rwy 18C-36C) 126.4 257.8 (Rwy 18R-36L) 133.35 257.8	GND CON (180°-359°) 121.8 348.6 (360°-179°) 121.9 348.6	CLNC DEL 127.15 348.6
---	--	---	---	---



SE-2, 31 JAN 2019 to 28 FEB 2019

SE-2, 31 JAN 2019 to 28 FEB 2019



1320	4000	LOCAS	VGSi and RNAV glidepath not coincident (VGSi Angle 3.00/TCH 74).			
*LNAV only.		*1 NM to RWY 36R		HEKAM		
RWY 36R		HAYOU 2500	CIKDU 3000	JENDA 4000	LANSR 5000	HEKAM 6000
1.1		4.3 NM		1.6 NM	3.2 NM	3.2 NM
CATEGORY	A		B		C	
LPV DA	927/18		200 (200-½)			
LNAV/VNAV DA	1228-1¼		501 (500-1¼)			
LNAV MDA	1120/24		393 (400-½)		1120/35 393 (400-⅓)	
C CIRCLING	1380-1		632 (700-1)		1500-2¼ 752 (800-2¼) 1500-2½ 752 (800-2½)	