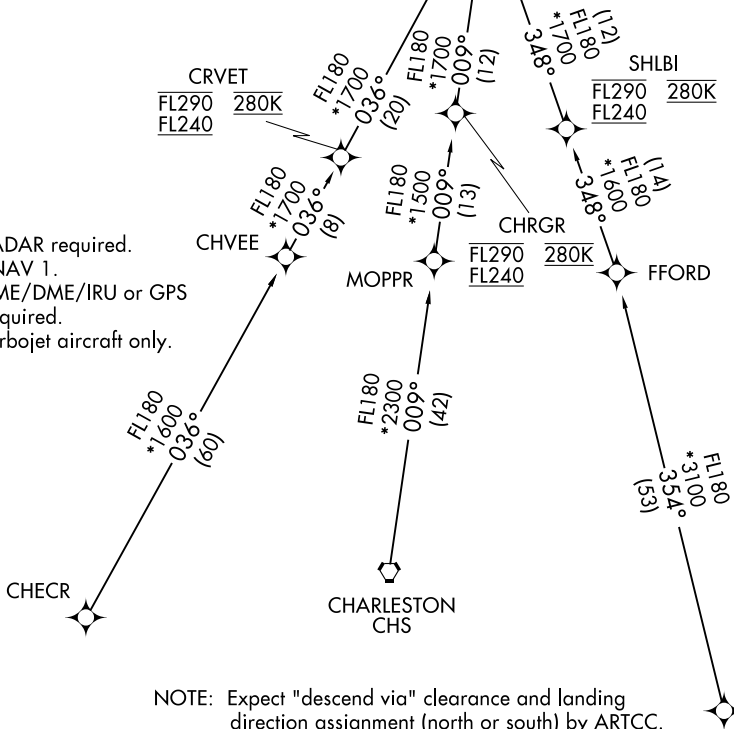
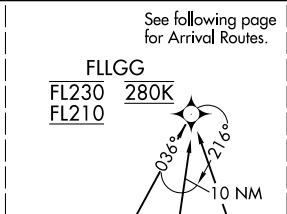


STOCR THREE ARRIVAL (RNAV) Transition Routes

CHARLOTTE ARR D-ATIS
121.15
CHARLOTTE APP CON
126.15 282.325



- NOTE: RADAR required.
- NOTE: RNAV 1.
- NOTE: DME/DME/IRU or GPS required.
- NOTE: Turbojet aircraft only.

- NOTE: Expect "descend via" clearance and landing direction assignment (north or south) by ARTCC. For vertical navigation planning, landing south, select Rwy 23, landing north, select Rwy 36R.
- NOTE: Descend via mach number until intercepting 280K. Maintain 280K until slowed by the STAR or assigned by ATC.
- NOTE: CLT approach will assign landing runway.

NOTE: Chart not to scale.

CHARLESTON TRANSITION (CHS.STOCR3)
CHECR TRANSITION (CHECR.STOCR3)
PITRW TRANSITION (PITRW.STOCR3)

(CONTINUED ON FOLLOWING PAGES)

SE-2, 31 JAN 2019 to 28 FEB 2019

SE-2, 31 JAN 2019 to 28 FEB 2019