

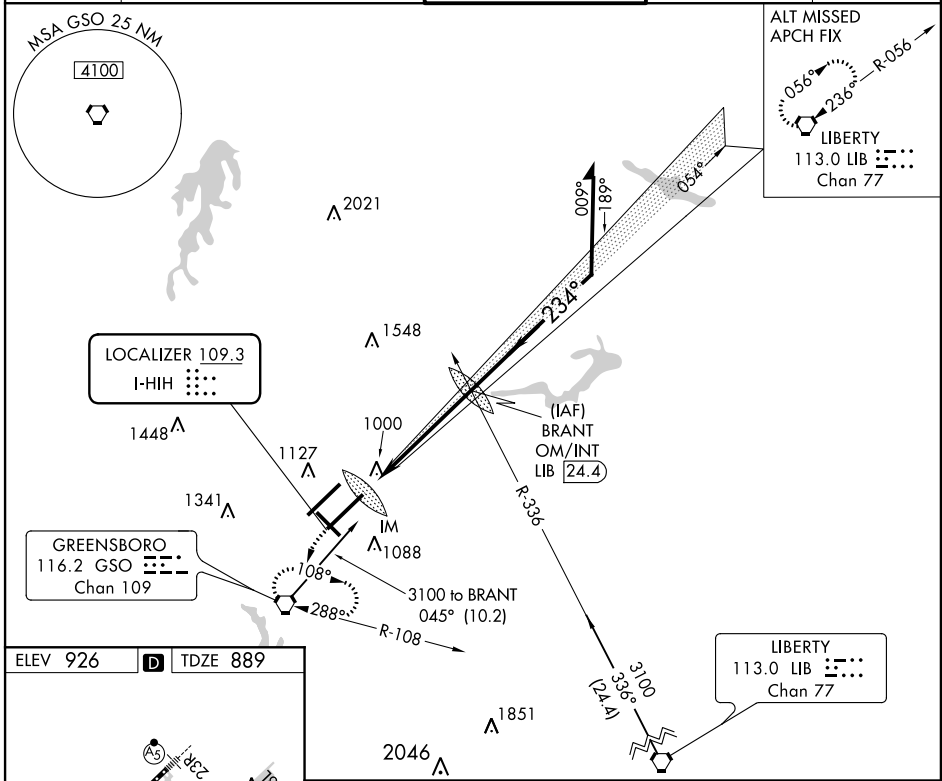
LOC I-HIH <b>109.3</b>	APP CRS <b>234°</b>	Rwy Idg TDZE Apt Elev	<b>9601</b> <b>889</b> <b>926</b>
---------------------------	------------------------	-----------------------------	---

# ILS RWY 23L (CAT II)

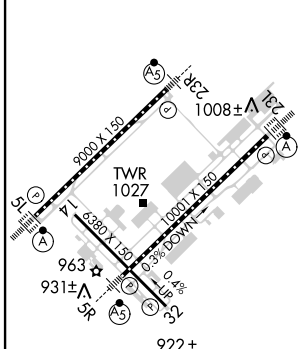
PIEDMONT TRIAD INTL (GSO)

Simultaneous approach authorized with Rwy 23R.	ALSIF-2	MISSED APPROACH: Climb to 1300 then climbing left turn to 3100 direct GSO VORTAC and hold, continue climb-in-hold to 3100.

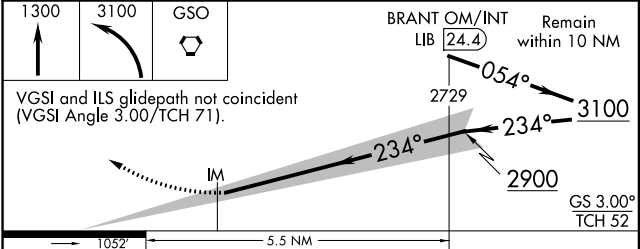
D-ATIS <b>128.55</b>	GREENSBORO APP CON <b>124.35 269.225</b> <b>126.6 327.075</b> (250°-049°) (050°-249°)	GREENSBORO TOWER <b>119.1 290.325</b>	GND CON <b>121.9 348.6</b>	CLNC DEL <b>121.75</b>
-------------------------	--	--	-------------------------------	---------------------------



ELEV 926	<b>D</b>	TDZE 889
----------	----------	----------



TDZ/CL Rws 5L, 23R and 23L  
REIL Rwy 32  
HIRL Rws 14-32, 5R-23L and 5L-23R



CATEGORY	A	B	C	D
S-ILS 23L	RA 106/12 100 DA 989			

**CATEGORY II ILS - SPECIAL AIRCREW & AIRCRAFT CERTIFICATION REQUIRED**

SE-2, 31 JAN 2019 to 28 FEB 2019

SE-2, 31 JAN 2019 to 28 FEB 2019