

LOC/DME I-LLG 109.55 Chan 32(Y)	APP CRS 054°	Rwy Idg TDZE 9000 916 Apt Elev 926
---	------------------------	---

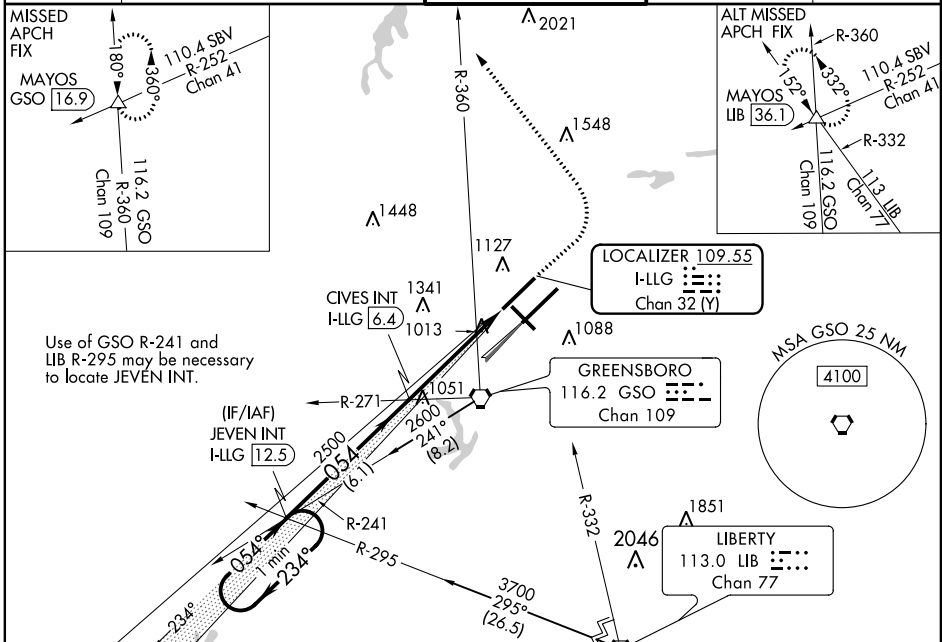
ILS or LOC RWY 5L

PIEDMONT TRIAD INTL (GSO)

Simultaneous approach authorized with Rwy 5R.

ALSF-2 MISSED APPROACH: Climb to 1400 then climbing left turn to 3100 via heading 330° and GSO VORTAC R-360 to MAYOS INT/GSO 16.9 DME and hold.

D-ATIS 128.55	GREENSBORO APP CON 124.35 269.225 (250°-049°) 126.6 327.075 (050°-249°)	GREENSBORO TOWER 119.1 290.325	GND CON 121.9 348.6	CLNC DEL 121.75
-------------------------	---	--	-------------------------------	---------------------------



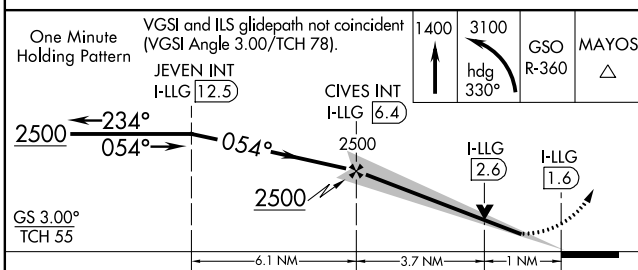
Use of GSO R-241 and LIB R-295 may be necessary to locate JEVEN INT.

LOCALIZER 109.55 I-LLG Chan 32 (Y)

GREENSBORO 116.2 GSO Chan 109

LIBERTY 113.0 LIB Chan 77

DME or RADAR required for procedure entry at LIB VORTAC.



ELEV 926 TDZE 916

TDZ/CL Rwy 5L, 23R and 23L
REIL Rwy 32
HIRL Rwy 14-32, 5R-23L and 5L-23R

