

LOC/DME I-GFN 111.15 Chan 48 (Y)	APP CRS 325°	Rwy Idg TDZE Apt Elev	6380 902 926
---	------------------------	-----------------------------	---

ILS Y or LOC/DME Y RWY 32

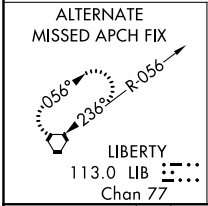
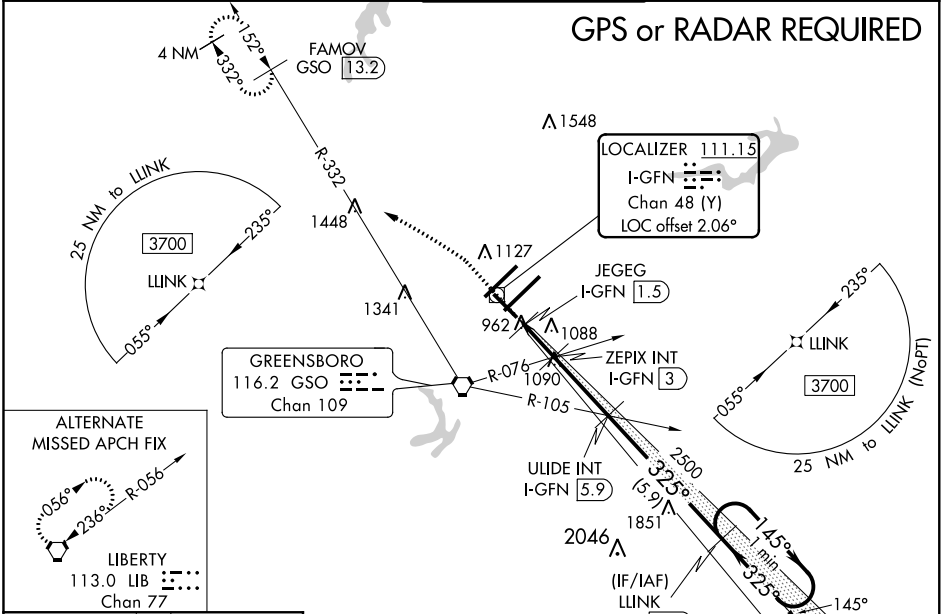
PIEDMONT TRIAD INTL (GSO)

⚠ DME required. When local altimeter setting is not received use Smith Reynolds altimeter setting and increase DA to 1188 feet, all MDA 40 feet, increase S-ILS 32 all Cats visibility 1/8 mile and S-LOC 32 Cats C/D 1/8 mile, and Circling Cats C/D 1/4 mile.

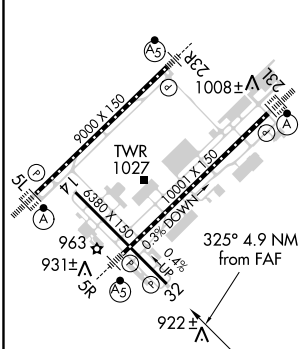
MISSED APPROACH: Climb to 1400 then climbing left turn to 3700 on heading 307° and GSO VORTAC R-332 to FAMOV/GSO 13.2 DME and hold.

D-ATIS 128.55	GREENSBORO APP CON 124.35 269.225 126.6 327.075 (050°-249°)	GREENSBORO TOWER 119.1 290.325	GND CON 121.9 348.6	CLNC DEL 121.75
-------------------------	---	--	-------------------------------	---------------------------

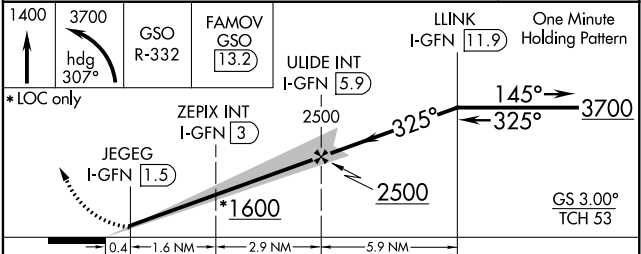
GPS or RADAR REQUIRED



ELEV 926	D	TDZE 902
----------	----------	----------



TDZ/CL Rws 5L, 23R and 23L	REIL Rwy 32	HIRL Rws 14-32, 5R-23L and 5L-23R
----------------------------	-------------	-----------------------------------



CATEGORY	A	B	C	D
S-ILS 32		1152-3/4	250 (300-3/4)	
S-LOC 32	1220-1	318 (400-1)	1220-7/8	318 (400-7/8)
C CIRCLING	1440-1	514 (600-1)	1700-2 1/4 774 (800-2 1/4)	1700-2 1/2 774 (800-2 1/2)

SE-2, 31 JAN 2019 to 28 FEB 2019

SE-2, 31 JAN 2019 to 28 FEB 2019