

LOC/DME I-GFN 111.15 Chan 48(Y)	APP CRS 325°	Rwy Idg 6380 TDZE 902 Apt Elev 926
--	------------------------	---

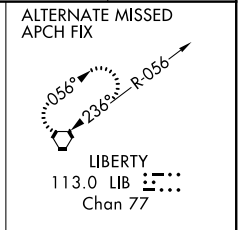
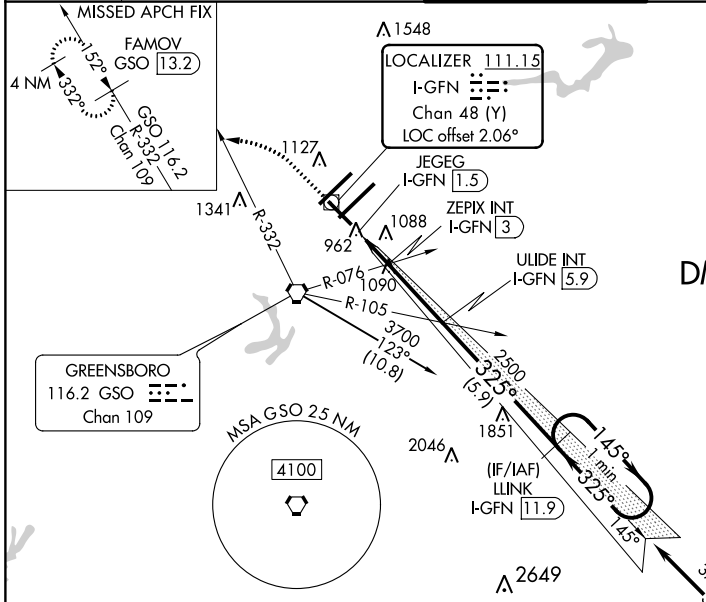
ILS Z or LOC/DME Z RWY 32

PIEDMONT TRIAD INTL (GSO)

⚠ DME required. When local altimeter setting is not received use Smith Reynolds altimeter setting and increase DA to 1188 feet, all MDA 40 feet, increase S-LS 32 all Cats visibility 1/8 mile and S-LOC 32 Cats C/D 1/8 mile, and Circling Cats C/D 1/4 mile.

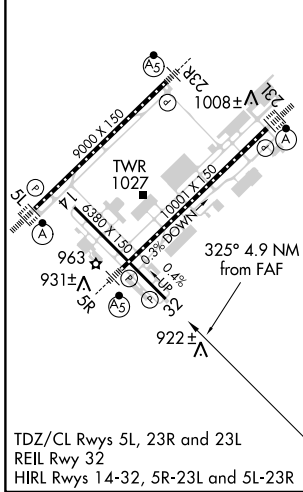
MISSED APPROACH: Climb to 1400 then climbing left turn to 3700 on heading 307° and GSO VORTAC R-332 to FAMOV/GSO 13.2 DME and hold.

D-ATIS 128.55	GREENSBORO APP CON 124.35 269.225 (250°-049°) 126.6 327.075 (050°-249°)	GREENSBORO TOWER 119.1 290.325	GND CON 121.9 348.6	CLNC DEL 121.75
-------------------------	---	--	-------------------------------	---------------------------



DME REQUIRED

ELEV 926	D	TDZE 902
----------	----------	----------



1400	3700	GSO R-332	FAMOV GSO 13.2	ULIDE INT I-GFN 5.9	One Minute Holding Pattern
hdg 307°					
*LOC only	JEJEG I-GFN 1.5	ZEPIX INT I-GFN 3	ULIDE INT I-GFN 5.9	3700	
				145°	
				325°	
				3700	
				GS 3.00°	
				TCH 53	
	0.4	1.6 NM	2.9 NM	5.9 NM	
CATEGORY	A	B	C	D	
S-ILS 32	1152-3/4				250 (300-3/4)
S-LOC 32	1220-1	318 (400-1)	1220-7/8		318 (400-7/8)
C CIRCLING	1440-1	514 (600-1)	1700-2 1/4		1700-2 1/2
			774 (800-2 1/4)		774 (800-2 1/2)

SE-2, 31 JAN 2019 to 28 FEB 2019

SE-2, 31 JAN 2019 to 28 FEB 2019