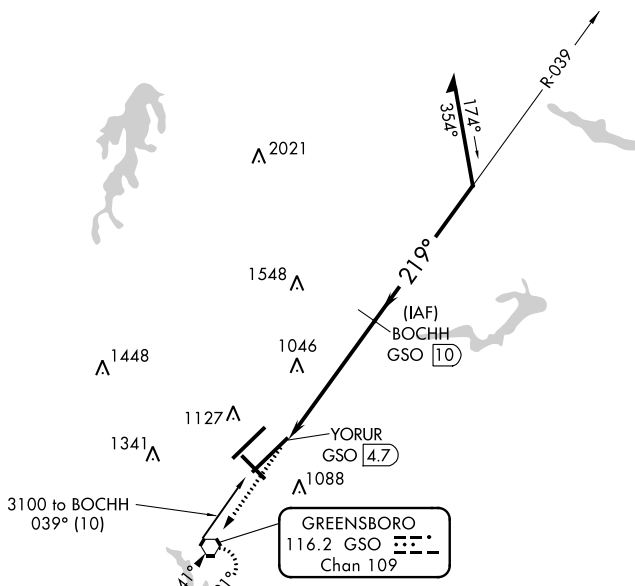
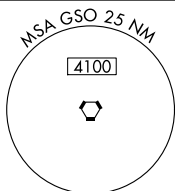


VORTAC GSO 116.2 Chan 109	APP CRS 219°	Rwy Idg 9601 TDZE 889 Apt Elev 926
-----------------------------------------------	------------------------	---------------------------------------------------------------

VOR/DME RWY 23L

PIEDMONT TRIAD INTL (GSO)

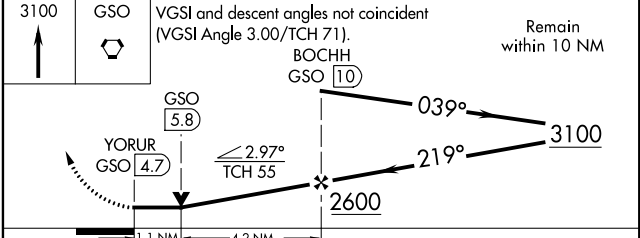
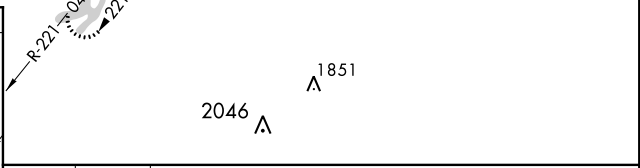
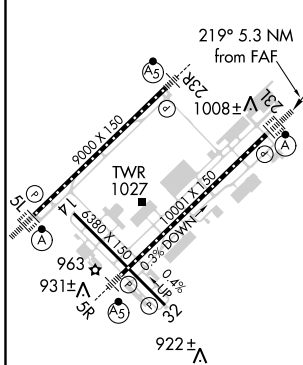
For inop ALSF, increase S-23L Cat D visibility to RVR 6000.		ALSF-2 	MISSED APPROACH: Climb to 3100 direct GSO VORTAC and hold, continue climb-in-hold to 3100.	
D-ATIS 128.55	GREENSBORO APP CON 124.35 269.225 (250°-049°) 126.6 327.075 (050°-249°)	GREENSBORO TOWER 119.1 290.325	GND CON 121.9 348.6	CLNC DEL 121.75



SE-2, 31 JAN 2019 to 28 FEB 2019

SE-2, 31 JAN 2019 to 28 FEB 2019

ELEV 926	D	TDZE 889
----------	----------	----------



CATEGORY	A	B	C	D
S-23L	1300/24	411 (400-½)	1300/40 411 (400-¾)	1300/50 411 (400-1)
CIRCLING	1440-1	514 (600-1)	1440-1½ 514 (600-1½)	1480-2 554 (600-2)

TDZ/CL Rwy 5L, 23R and 23L
 REIL Rwy 32
 HIRL Rwy 14-32, 5R-23L and 5L-23R