


LOC I-MCN 109.5	APP CRS 054°	Rwy Idg TDZE Apt Elev	6221 344 354
---------------------------	------------------------	-----------------------------	---

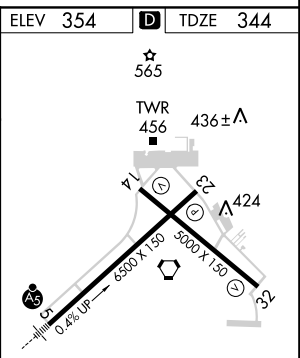
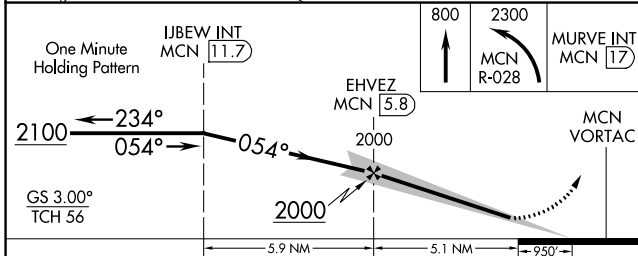
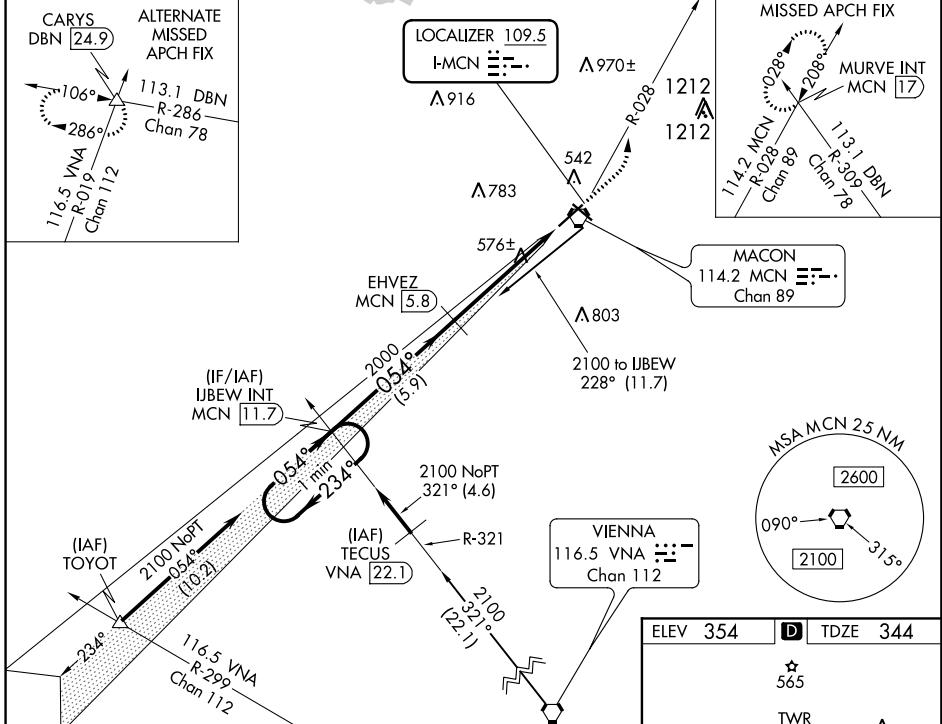
ILS RWY 5 (SA CAT I & II)

MIDDLE GEORGIA RGNL (MCN)

⚠ DME from MCN VORTAC. Simultaneous reception of I-MCN and MCN DME required. DME required. SA CAT I: Requires specific OPSPEC, MSPEC, or LOA approval and use of HUD to DH. SA CAT II: Reduced lighting: Requires specific OPSPEC, MSPEC, or LOA approval and use of autoland or HUD to touchdown. SA CAT I/II: Procedure NA when tower closed.

MALS  MISSED APPROACH: Climb to 800 then climbing left turn to 2300 on MCN VORTAC R-028 to MURVE INT/MCN 17 DME and hold.

ATIS 120.775	ATLANTA APP CON * 124.2 279.6	MACON TOWER * 128.2 (CTAF) 257.8	GND CON 121.65	UNICOM 122.95
------------------------	---	--	--------------------------	-------------------------



CATEGORY	A	B	C	D
S-ILS 5	SA CAT I	RA 216/14	150 DA 494	
S-ILS 5	SA CAT II	RA 151/12	100 DA 444	

SA CATEGORY I & II ILS - SPECIAL AIRCREW & AIRCRAFT CERTIFICATION REQUIRED

HIRL Rwy 5-23
MIRL Rwy 14-32
REIL Rwy 23 and 32

SE-4, 31 JAN 2019 to 28 FEB 2019

SE-4, 31 JAN 2019 to 28 FEB 2019