
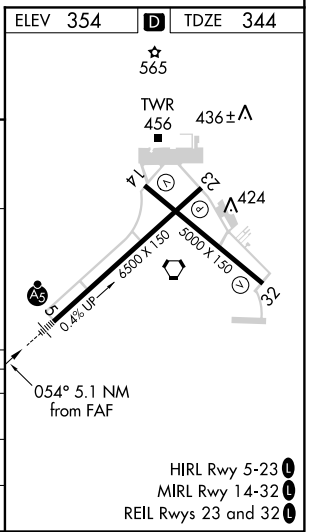
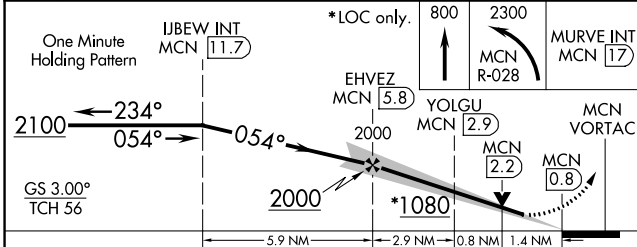
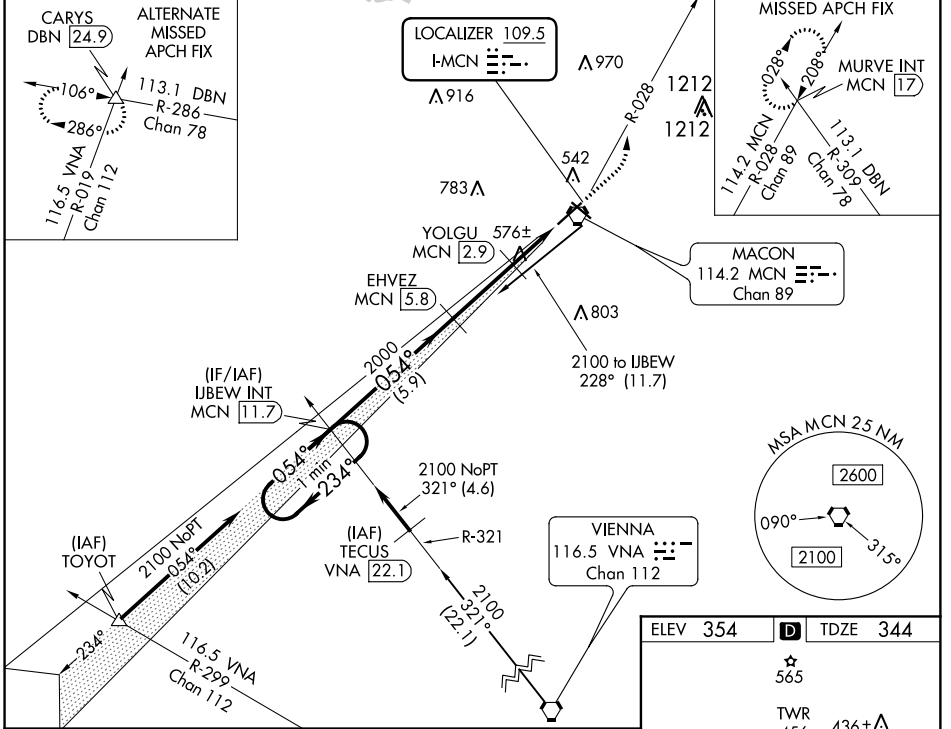


LOC I-MCN 109.5	APP CRS 054°	Rwy Idg TDZE Apt Elev	6221 344 354
---------------------------	------------------------	-----------------------------	---

ILS or LOC RWY 5

MIDDLE GEORGIA RGNL (MCN)

<p>⚠ DME from MCN VORTAC. Simultaneous reception of I-MCN and MCN DME required. DME required. For inop ALS, increase S-ILS 5 Cat E visibility to RVR 4000 and S-LOC 5 Cats C/D/E visibility to 1 3/8 SM. **Cat A/B/C/D RVR 1800 authorized with use of FD or AP or HUD to DA.</p>		<p>MALSR</p> 	<p>MISSED APPROACH: Climb to 800 then climbing left turn to 2300 on MCN VORTAC R-028 to MURVE INT/MCN 17 DME and hold.</p>	
ATIS 120.775	ATLANTA APP CON * 124.2 279.6	MACON TOWER * 128.2 (CTAF) 257.8	GND CON 121.65	UNICOM 122.95



CATEGORY	A	B	C	D	E
S-ILS 5**	544/24 200 (200-1/2)				
S-LOC 5	840/24	496 (500-1/2)	840/50		496 (500-1)
CIRCLING	900-1	546 (600-1)	920-1 1/2	1120-2 1/2	1180-3
			566 (600-1 1/2)	766 (800-2 1/2)	826 (900-3)

SE-4, 31 JAN 2019 to 28 FEB 2019

SE-4, 31 JAN 2019 to 28 FEB 2019