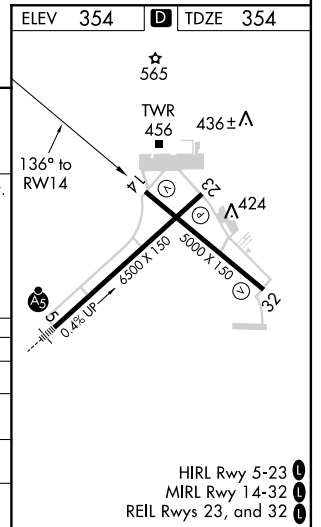
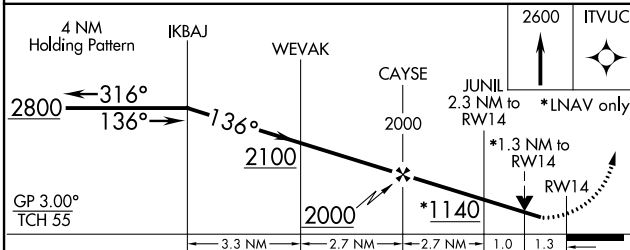
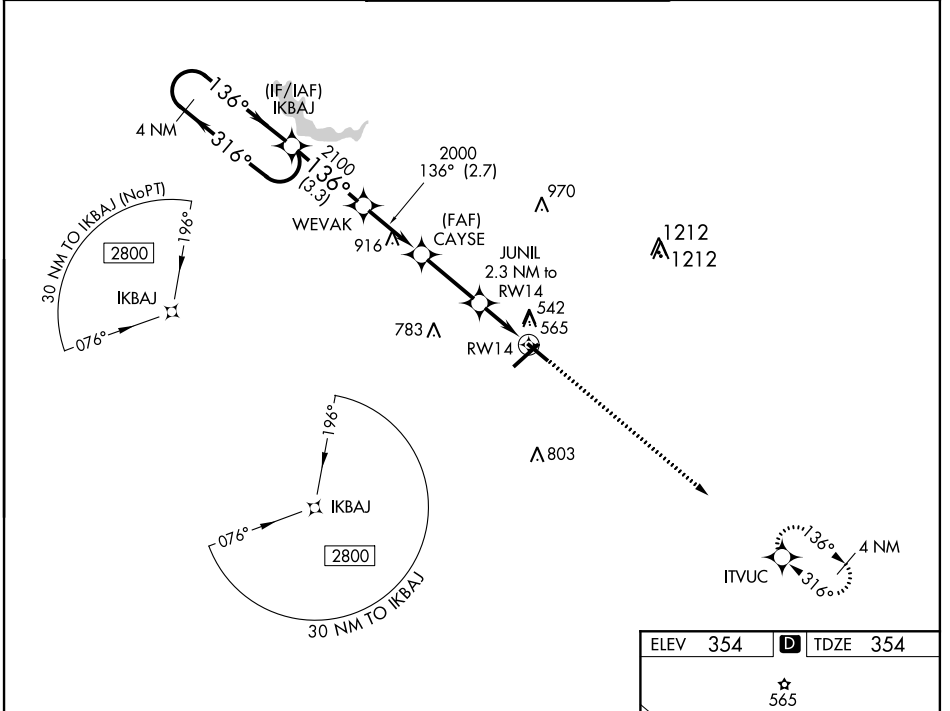


WAAS CH <b>90322</b> W14A	APP CRS <b>136°</b>	Rwy Idg <b>5000</b> TDZE <b>354</b> Apt Elev <b>354</b>
---------------------------------	------------------------	---

# RNAV (GPS) RWY 14

MIDDLE GEORGIA RGNL (MCN)

<p><b>⚠</b> For uncompensated Baro-VNAV systems, LNAV/VNAV NA below -8°C (18°F) or above 54°C (130°F). DME/DME RNP-0.3 NA. Rwy 14 helicopter visibility reduction below ¾ SM NA.</p>		<p>MISSED APPROACH: Climb to 2600 direct ITVUC and hold.</p>		
ATIS <b>120.775</b>	ATLANTA APP CON ★ <b>124.2 279.6</b>	MACON TOWER ★ <b>128.2 (CTAF) 257.8</b>	GND CON <b>121.65</b>	UNICOM <b>122.95</b>



CATEGORY	A	B	C	D
LPV DA	652-1		298 (300-1)	
LNAV/VNAV DA	745-1¼		391 (400-1¼)	
LNAV MDA	820-1 466 (500-1)		820-1¾ 466 (500-1¾)	
<b>C</b> CIRCLING	900-1 546 (600-1)		920-1½ 1120-2½ 566 (600-1½) 766 (800-2½)	

SE-4, 31 JAN 2019 to 28 FEB 2019

SE-4, 31 JAN 2019 to 28 FEB 2019