

Orig 09015

# RIVER VISUAL RWY 5

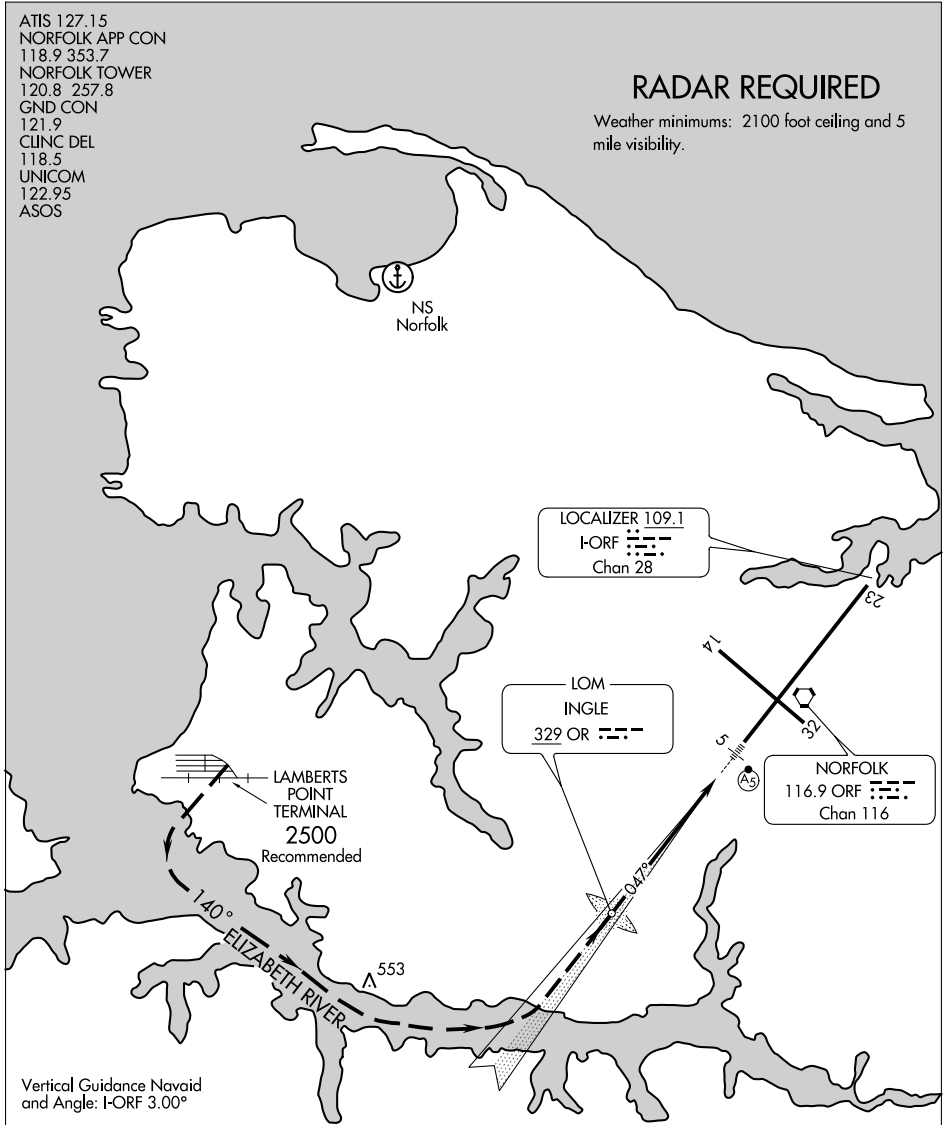
AL-291 (FAA)

NORFOLK INTL (ORF)  
NORFOLK, VIRGINIA

ATIS 127.15  
 NORFOLK APP CON  
 118.9 353.7  
 NORFOLK TOWER  
 120.8 257.8  
 GND CON  
 121.9  
 CLINC DEL  
 118.5  
 UNICOM  
 122.95  
 ASOS

## RADAR REQUIRED

Weather minimums: 2100 foot ceiling and 5 mile visibility.



NE-3, 31 JAN 2019 to 28 FEB 2019

NE-3, 31 JAN 2019 to 28 FEB 2019

Vertical Guidance Navaid  
and Angle: I-ORF 3.00°

1 NM	2	3	4	5	6
------	---	---	---	---	---



**RIVER VISUAL RWY 5**  
PROCEDURE NOT AUTHORIZED AT NIGHT

# RIVER VISUAL RWY 5

36°54'N-76°12'W

NORFOLK, VIRGINIA  
NORFOLK INTL (ORF)

Orig 09015