

APP CRS	Rwy Idg	8995
227°	TDZE	26
	Apt Elev	27

RNAV (RNP) Y RWY 23

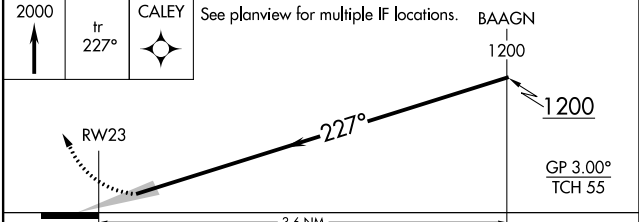
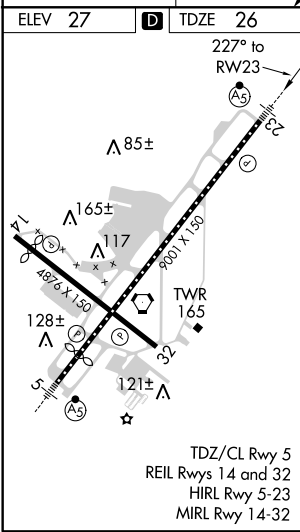
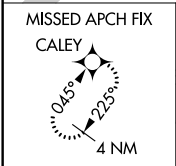
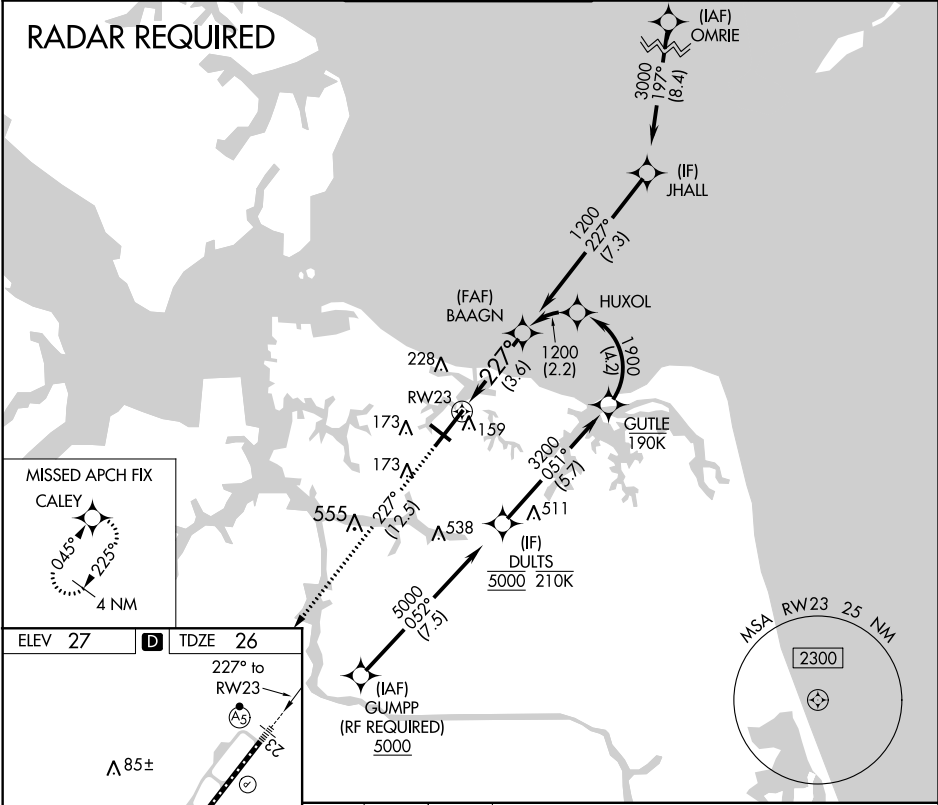
NORFOLK INTL (ORF)

▼ For uncompensated Baro-VNAV systems, procedure NA below -9°C (16°F) or above 54°C (130°F). GPS required. For inop ALS, increase RNP 0.10 DA visibility all Cats to 1½ SM, increase RNP 0.30 DA visibility all Cats to 1¾ SM.

MALSR

MISSED APPROACH: Climb to 2000 on track 227° to CALEY and hold.

ATIS 127.15	NORFOLK APP CON 118.9 353.7	NORFOLK TOWER 120.8 257.8	GND CON 121.9	CLNC DEL 118.5
------------------------------	--	--	--------------------------------	---------------------------------



CATEGORY	A	B	C	D
RNP 0.10 DA		432-¾	406 (500-¾)	
RNP 0.30 DA		491-1	465 (500-1)	

AUTHORIZATION REQUIRED

NE-3, 31 JAN 2019 to 28 FEB 2019

NE-3, 31 JAN 2019 to 28 FEB 2019