
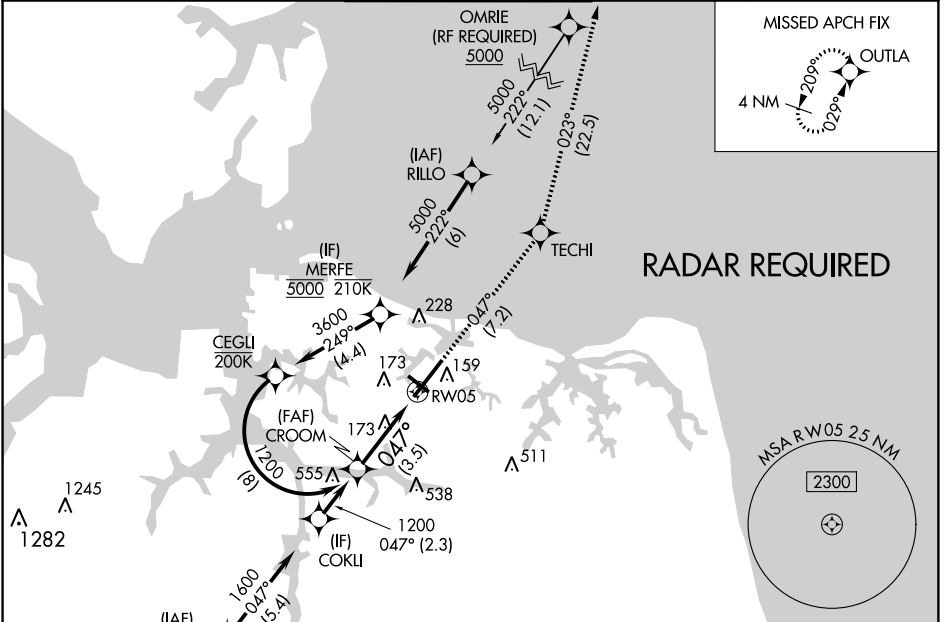


APP CRS	Rwy Idg	7809
047°	TDZE	26
	Apt Elev	27

RNAV (RNP) Y RWY 5

NORFOLK INTL (ORF)

<p>▼ For uncompensated Baro-VNAV systems, LNAV/VNAV NA below -9°C (16°F) or above 54°C (130°F). GPS required.</p>		<p>MALSR</p> 	<p>MISSED APPROACH: Climb to 2000 on track 047° to TECHI and on track 023° to OUTLA and hold.</p>		
<p>ATIS</p> <p>127.15</p>	<p>NORFOLK APP CON</p> <p>118.9 353.7</p>	<p>NORFOLK TOWER</p> <p>120.8 257.8</p>		<p>GND CON</p> <p>121.9</p>	<p>CLNC DEL</p> <p>118.5</p>



NE-3, 31 JAN 2019 to 28 FEB 2019

NE-3, 31 JAN 2019 to 28 FEB 2019

ELEV	27	D	TDZE	26
------	----	---	------	----

See planview for multiple IF locations.

2000	↑	tr	047°	TECHI	tr	023°	OUTLA
------	---	----	------	-------	----	------	-------

CATEGORY	A	B	C	D
RNP 0.10 DA		350/26	324 (400-½)	
RNP 0.30 DA		454/40	428 (500-¾)	

AUTHORIZATION REQUIRED

TDZ/CL Rwy 5
REIL Rwy 14 and 32
HIRL Rwy 5-23
MIRL Rwy 14-32