

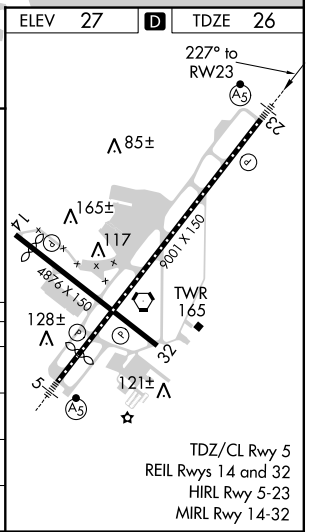
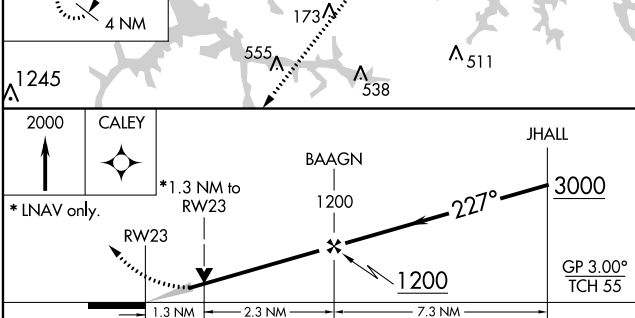
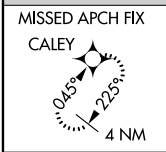
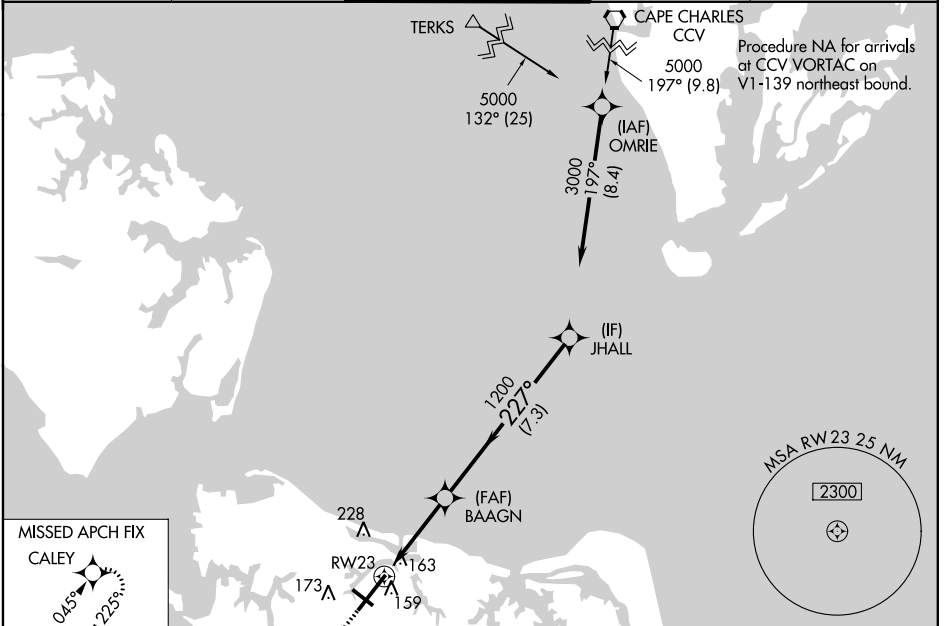
WAAS CH 56322 W23A	APP CRS 227°	Rwy Idg TDZE Apt Elev	8995 26 27
--	------------------------	-----------------------------	---------------------------------------

RNAV (GPS) Z RWY 23

NORFOLK INTL (ORF)

<p>For uncompensated Baro-VNAV systems, LNAV/VNAV NA below -9°C (16°F) or above 54°C (130°F). DME/DME RNP-0.3 NA.</p>	MALSR 	MISSED APPROACH: Climb to 2000 direct CALEY and hold.

ATIS 127.15	NORFOLK APP CON 118.9 353.7	NORFOLK TOWER 120.8 257.8	GND CON 121.9	CLNC DEL 118.5
-----------------------	---------------------------------------	-------------------------------------	-------------------------	--------------------------



CATEGORY	A	B	C	D
LPV DA		226-½	200 (200-½)	
LNAV/VNAV DA		403-¾	377 (400-¾)	
LNAV MDA	480-½	454 (500-½)	480-⅞	454 (500-⅞)
CIRCLING	480-1 453 (500-1)	540-1 513 (600-1)	540-1½ 513 (600-1½)	900-2¾ 873 (900-2¾)

NE-3, 31 JAN 2019 to 28 FEB 2019

NE-3, 31 JAN 2019 to 28 FEB 2019