


WAAS CH 50222 W05A	APP CRS 047°	Rwy Idg TDZE Apt Elev	7809 26 27
--	------------------------	-----------------------------	---------------------------------------

RNAV (GPS) Z RWY 5

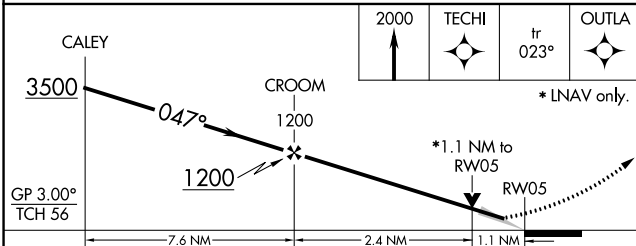
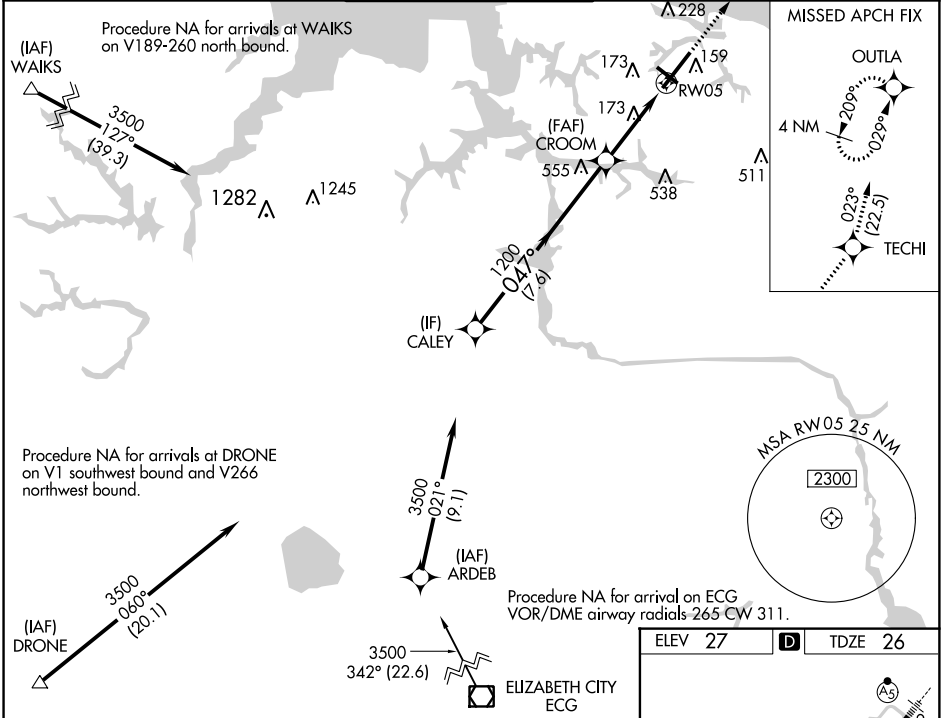
NORFOLK INTL (ORF)

⚠ For uncompensated Baro-VNAV systems, LNAV/VNAV NA below -9°C (16°F) or above 54°C (130°F). DME/DME RNP-0.3 NA. For inoperative ALS, increase LNAV/VNAV all Cats visibility to RVR 4500 and LNAV Cats C and D visibility to RVR 6000.

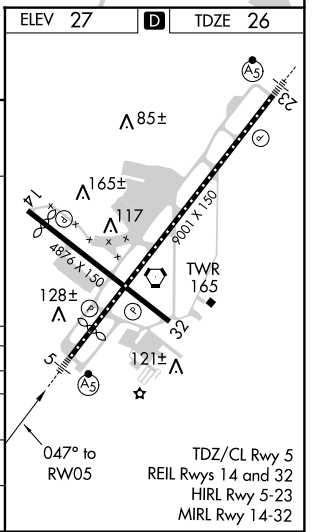
MALSR 

MISSED APPROACH: Climb to 2000 direct TECHI then on track 023° to OUTLA and hold.

ATIS 127.15	NORFOLK APP CON 118.9 353.7	NORFOLK TOWER 120.8 257.8	GND CON 121.9	CLNC DEL 118.5
-----------------------	---------------------------------------	-------------------------------------	-------------------------	--------------------------



CATEGORY	A	B	C	D
LPV DA		226/18	200 (200-½)	
LNAV/VNAV DA		306/24	280 (300-½)	
LNAV MDA	440/24	414 (500-½)	440/40	414 (500-¾)
C CIRCLING	480-1 453 (500-1)	540-1 513 (600-1)	540-1½ 513 (600-½)	900-2¾ 873 (900-2¾)



NE-3, 31 JAN 2019 to 28 FEB 2019

NE-3, 31 JAN 2019 to 28 FEB 2019