

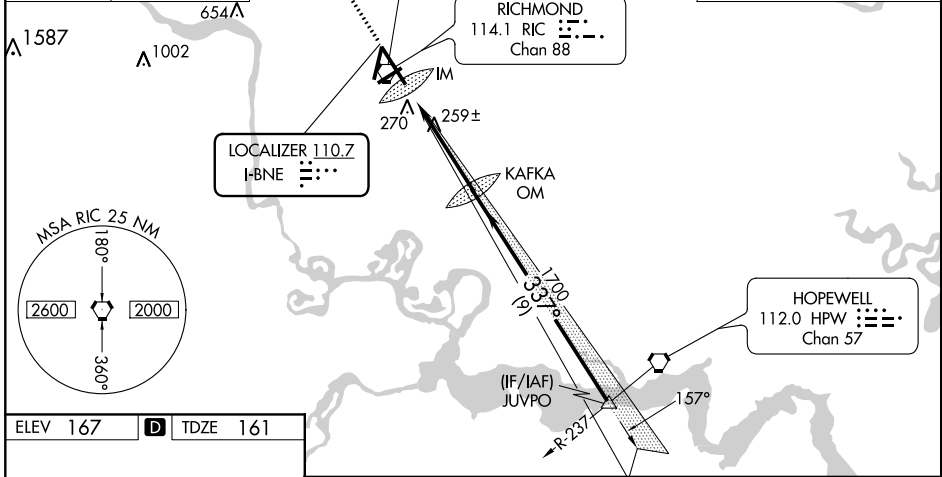
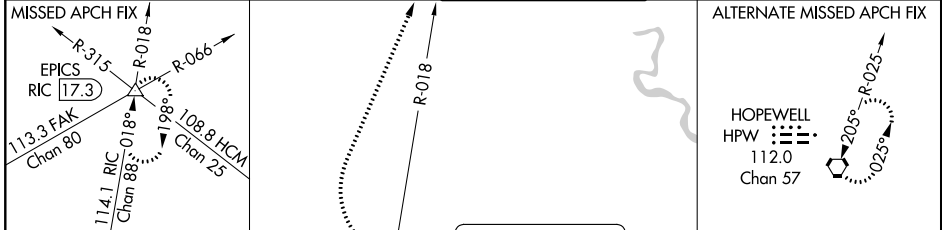
LOC I-BNE <b>110.7</b>	APP CRS <b>337°</b>	Rwy Idg TDZE Apt Elev	<b>9003</b> <b>161</b> <b>167</b>
---------------------------	------------------------	-----------------------------	---

# ILS RWY 34 (CAT II & III)

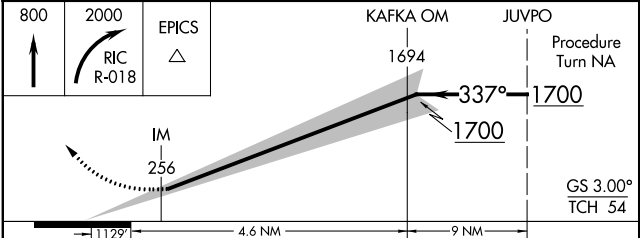
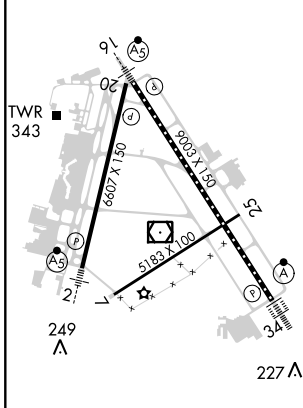
RICHMOND INTL (RIC)

<p><b>▼</b> CAT II: RVR 1000 authorized with specific OPSPEC, MSPEC, or LOA approval and use of Autoland or HUD to touchdown.</p>	<p>ALSf-2</p>	<p>MISSED APPROACH: Climb to 800 then climbing right turn to 2000 via RIC VORTAC R-018 to EPICS INT/ RIC 17.3 DME and hold.</p>
---	---------------	---

<p>ATIS <b>119.15 263.025</b></p>	<p>POTOMAC APP CON <b>126.4 282.375</b> (001°-185°) <b>126.75 307.2</b> (186°-360°)</p>	<p>RICHMOND TOWER <b>121.1 257.8</b></p>	<p>GND CON <b>121.9 348.6</b></p>	<p>CLNC DEL <b>127.55 348.6</b></p>
---------------------------------------	---	--	---------------------------------------	---



ELEV 167	<b>D</b>	TDZE 161
----------	----------	----------



CATEGORY	A	B	C	D
S-ILS 34	CAT II RA 101/12 100 DA 261			
S-ILS 34	CAT IIIa RVR 07			
S-ILS 34	CAT IIIb RVR 06			
S-ILS 34	CAT IIIc NA			

**CATEGORY II & III ILS-SPECIAL AIRCREW & AIRCRAFT CERTIFICATION REQUIRED**

TDZ/CL Rwy 34  
HIRL Rws 2-20, 7-25 and 16-34  
REIL Rwy 20

NE-3, 31 JAN 2019 to 28 FEB 2019

NE-3, 31 JAN 2019 to 28 FEB 2019