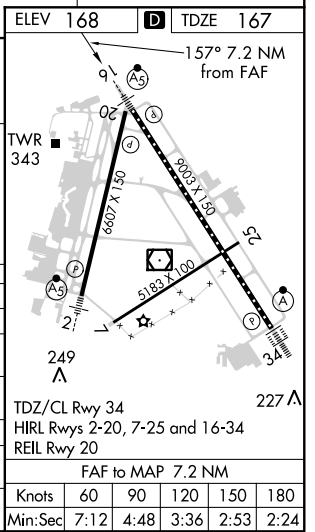
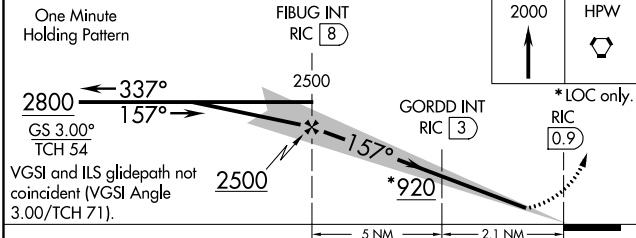
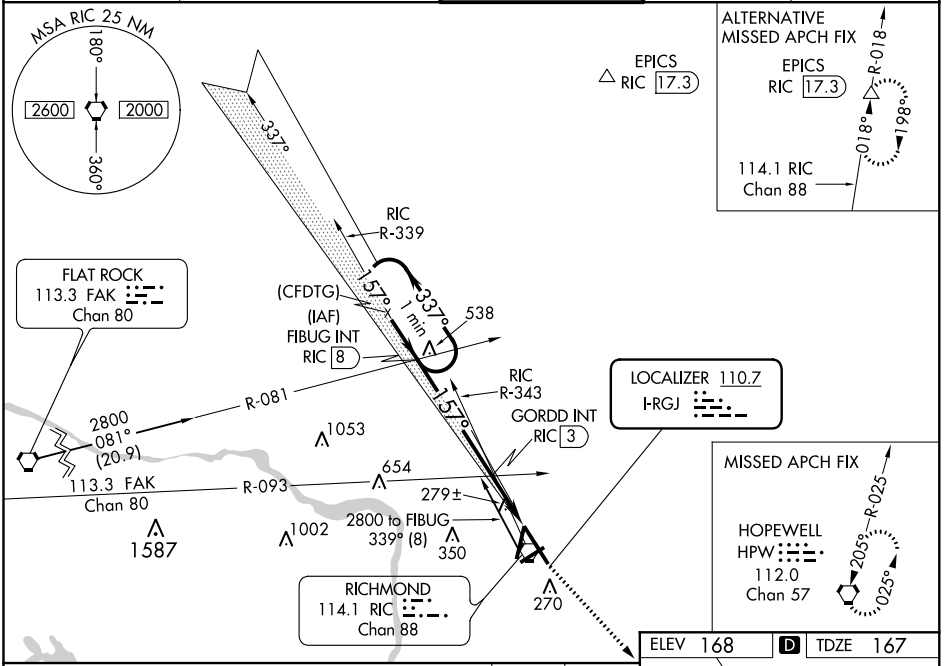


LOC I-RGJ <b>110.7</b>	APP CRS <b>157°</b>	Rwy Idg TDZE Apt Elev	<b>9003</b> <b>167</b> <b>168</b>
---------------------------	------------------------	-----------------------------	---

# ILS or LOC RWY 16

RICHMOND INTL (RIC)

<p><b>▼</b> For inop ALS, increase S-LOC 16 Cats C and D visibility to 2 SM. GORDD Fix Minimums: for inop ALS, increase S-LOC 16 Cats C and D visibility to 1½ SM. **RVR 1800 authorized with use of FD or AP or HUD to DA. % DME from RIC VORTAC.</p>	MALSR	MISSED APPROACH: Climb to 2000 direct HPW VORTAC and hold.				
	<table border="1"> <tr> <td>ATIS <b>119.15 263.025</b></td> <td>POTOMAC APP CON <b>126.4 282.375</b> (001°-185°) <b>126.75 307.2</b> (186°-360°)</td> <td>RICHMOND TOWER <b>121.1 257.8</b></td> <td>GND CON <b>121.9 348.6</b></td> <td>CLNC DEL <b>127.55 348.6</b></td> </tr> </table>	ATIS <b>119.15 263.025</b>	POTOMAC APP CON <b>126.4 282.375</b> (001°-185°) <b>126.75 307.2</b> (186°-360°)	RICHMOND TOWER <b>121.1 257.8</b>	GND CON <b>121.9 348.6</b>	CLNC DEL <b>127.55 348.6</b>
ATIS <b>119.15 263.025</b>	POTOMAC APP CON <b>126.4 282.375</b> (001°-185°) <b>126.75 307.2</b> (186°-360°)	RICHMOND TOWER <b>121.1 257.8</b>	GND CON <b>121.9 348.6</b>	CLNC DEL <b>127.55 348.6</b>		



CATEGORY	A	B	C	D
S-ILS 16 **	367/24 200 (200-½)			
S-LOC 16	920/24 753 (800-½)	920/40 753 (800-¾)	920-1¾	753 (800-1¾)
<b>C</b> CIRCLING	920-1 752 (800-1)	920-1¼ 752 (800-1¼)	920-2½	752 (800-2½)
GORDD FIX MINIMUMS %				
S-LOC 16	580/24 413 (500-½)	580/40 413 (500-¾)		
<b>C</b> CIRCLING	660-1 492 (500-1)	700-1½ 532 (600-1½)	720-2 552 (600-2)	

NE-3, 31 JAN 2019 to 28 FEB 2019

NE-3, 31 JAN 2019 to 28 FEB 2019