

LOC I-EZD 110.9	APP CRS 023°	Rwy Idg TDZE Apt Elev	6607 161 168
---------------------------	------------------------	-----------------------------	---

ILS or LOC RWY 2

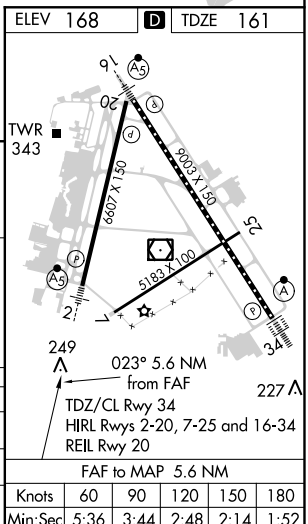
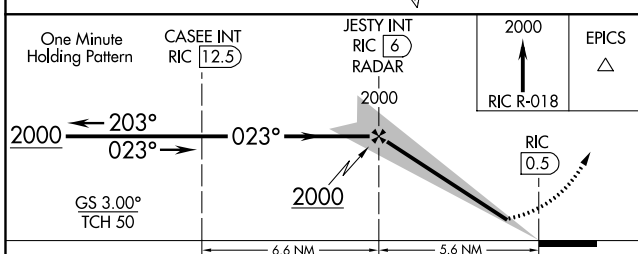
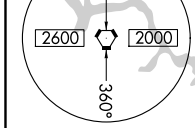
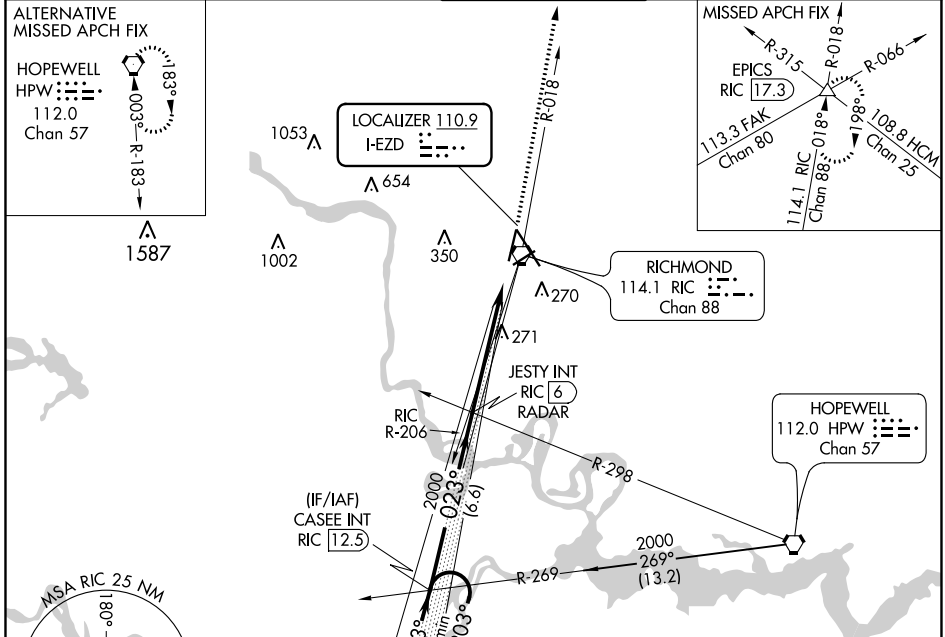
RICHMOND INTL (RIC)

▼ Rwy 2 helicopter visibility reduction below 3/4 SM NA. For inop ALS, increase S-LOC 2 Cats A and B visibility to 1 SM, and Cats C and D visibility to 1 1/2 SM.

MALSRL

MISSED APPROACH: Climb to 2000 on RIC VORTAC R-018 to EPICS INT/ RIC 17.3 DME and hold.

ATIS 119.15 263.025	POTOMAC APP CON 126.4 282.375 (001°-185°) 126.75 307.2 (186°-360°)	RICHMOND TOWER 121.1 257.8	GND CON 121.9 348.6	CLNC DEL 127.55 348.6
-------------------------------	--	--------------------------------------	-------------------------------	---------------------------------



CATEGORY	A	B	C	D
S-ILS 2		457-3/4	296 (300-3/4)	
S-LOC 2		540-3/4	379 (400-3/4)	
C CIRCLING	660-1	492 (500-1)	700-1 1/2 532 (600-1 1/2)	720-2 552 (600-2)

ELEV 168	D TDZE 161				
Knots	60	90	120	150	180
Min:Sec	5:36	3:44	2:48	2:14	1:52

NE-3, 31 JAN 2019 to 28 FEB 2019

NE-3, 31 JAN 2019 to 28 FEB 2019