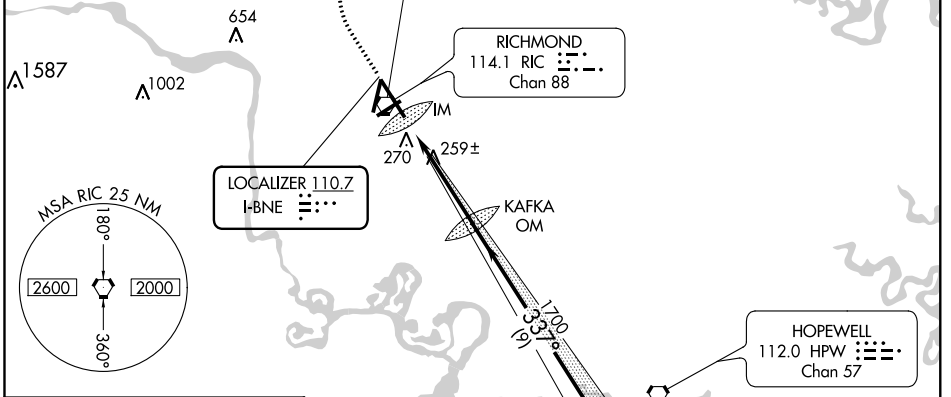
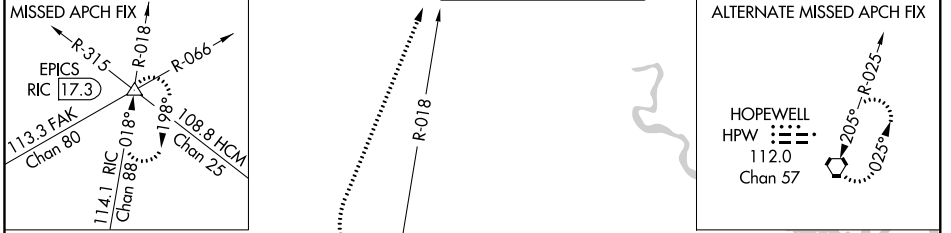


| | | |
|---------------------------|------------------------|---|
| LOC I-BNE 110.7 | APP CRS 337° | Rwy Idg TDZE 161 Apt Elev 167 |
|---------------------------|------------------------|---|

ILS or LOC RWY 34

RICHMOND INTL (RIC)

| | | | | |
|--|--|--|-------------------------------|---------------------------------|
| MISSED APCH FIX ATIS 119.15 263.025 | POTOMAC APP CON 126.4 282.375 (001°-185°) 126.75 307.2 (186°-360°) | RICHMOND TOWER 121.1 257.8 | GND CON 121.9 348.6 | CLNC DEL 127.55 348.6 |
| | | For inoperative ALSF-2, increase S-ILS 34 Cat E visibility to RVR 4000 and S-LOC 34 Cats C, D, and E visibility to RVR 5500. | | |



| | |
|--|--------------------------|
| ELEV 167 | TDZE 161 |
| TWR 343 249 A 227 A 337° 4.6 NM from FAF TDZ/CL Rwy 34 HIRL Rwys 2-20, 7-25 and 16-34 REIL Rwy 20 FAF to MAP 4.6 NM | |
| Knots | 60 90 120 150 180 |
| Min:Sec | 4:36 3:04 2:18 1:50 1:32 |

| | | | | | |
|--|-----------|---|------------------------|----------------------|-----------------------|
| 800 | 2000 | EPICS | Procedure Turn NA | | |
| ↑ | RIC R-018 | △ | | | |
| Kafka OM 1694 IM 1700 1700 337° 1700 GS 3.00° TCH 54 | | JUVPO 1700 9 NM 4.5 NM 0.1 NM | | | |
| CATEGORY | A | B | C | D | E |
| S-ILS 34 | 361/18 | | 200 (200-½) | | 361/24 200 (200-½) |
| S-LOC 34 | 520/24 | 359 (400-½) | 520/30 359 (400-¾) | | |
| CIRCLING | 660-1 | 493 (500-1) | 660-1½ 493 (500-1½) | 720-2 553 (600-2) | 740-2 573 (600-2) |

NE-3, 31 JAN 2019 to 28 FEB 2019

NE-3, 31 JAN 2019 to 28 FEB 2019