

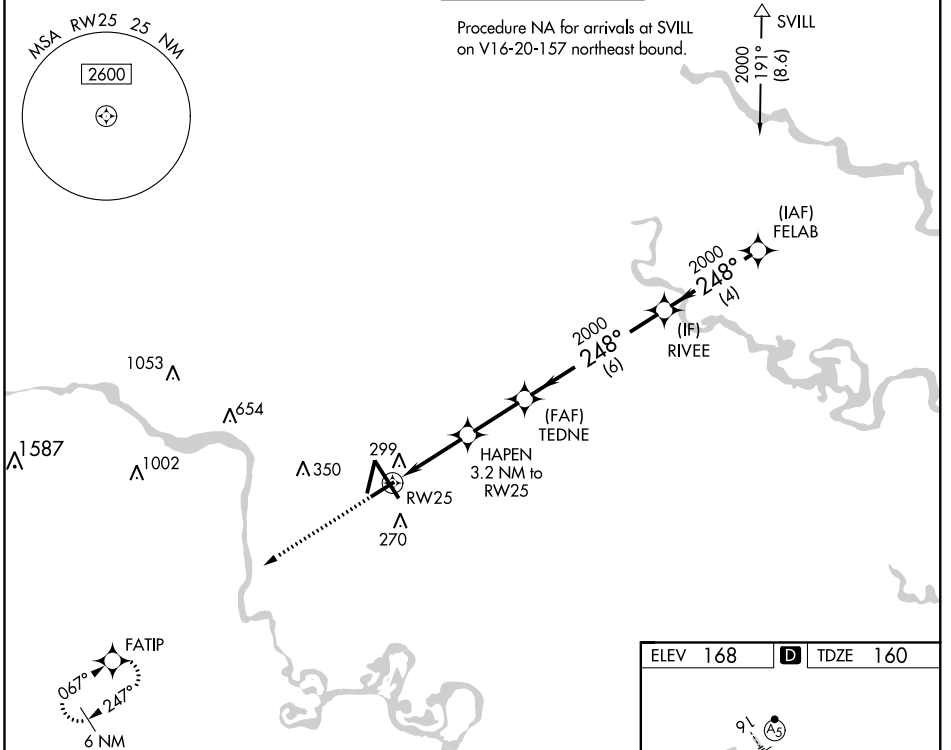
WAAS CH 48939	APP CRS 248°	Rwy Idg 5183 TDZE 160 Apt Elev 168
-------------------------	------------------------	---

RNAV (GPS) RWY 25

RICHMOND INTL (RIC)

RNP APCH	For uncompensated Baro-VNAV systems, LNAV/VNAV NA below -11°C (13°F) or above 54°C (130°F). Rwy 25 helicopter visibility reduction below RVR 4000 NA.	MISSED APPROACH: Climb to 3000 direct FATIP and hold.
----------	---	---

ATIS 119.15 263.025	POTOMAC APP CON 126.4 282.375 (001°-185°) 126.75 307.2 (186°-360°)	RICHMOND TOWER 121.1 257.8	GND CON 121.9 348.6	CLNC DEL 127.55 348.6
-------------------------------	--	--------------------------------------	-------------------------------	---------------------------------



NE-3, 31 JAN 2019 to 28 FEB 2019

NE-3, 31 JAN 2019 to 28 FEB 2019

3000	FATIP	TEDNE 2000	RIVEE 2000	FELAB 2000
* LNAV only	* 1.1 NM to RW25	HAPEN 3.2 NM to RW25	248°	2000
RW25	1220*	2000	2000	GP 3.00° TCH 52
1.1 NM	2.1 NM	2.4 NM	6 NM	4 NM
CATEGORY	A	B	C	D
LPV DA		421/50	261 (300-1)	
LNAV/VNAV DA		461/50	301 (300-1)	
LNAV MDA	560/55	400 (400-1)	560/60	400 (400-1¼)
CIRCLING	660-1	492 (500-1)	700-1½ 532 (600-1½)	720-2 552 (600-2)

