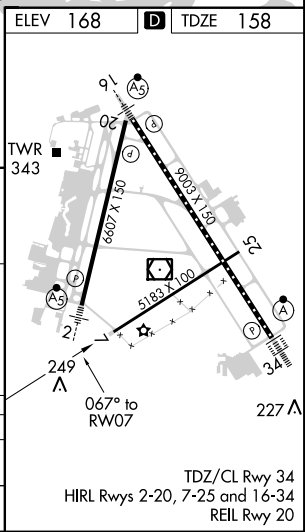
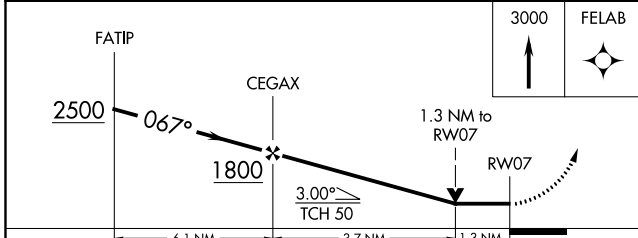
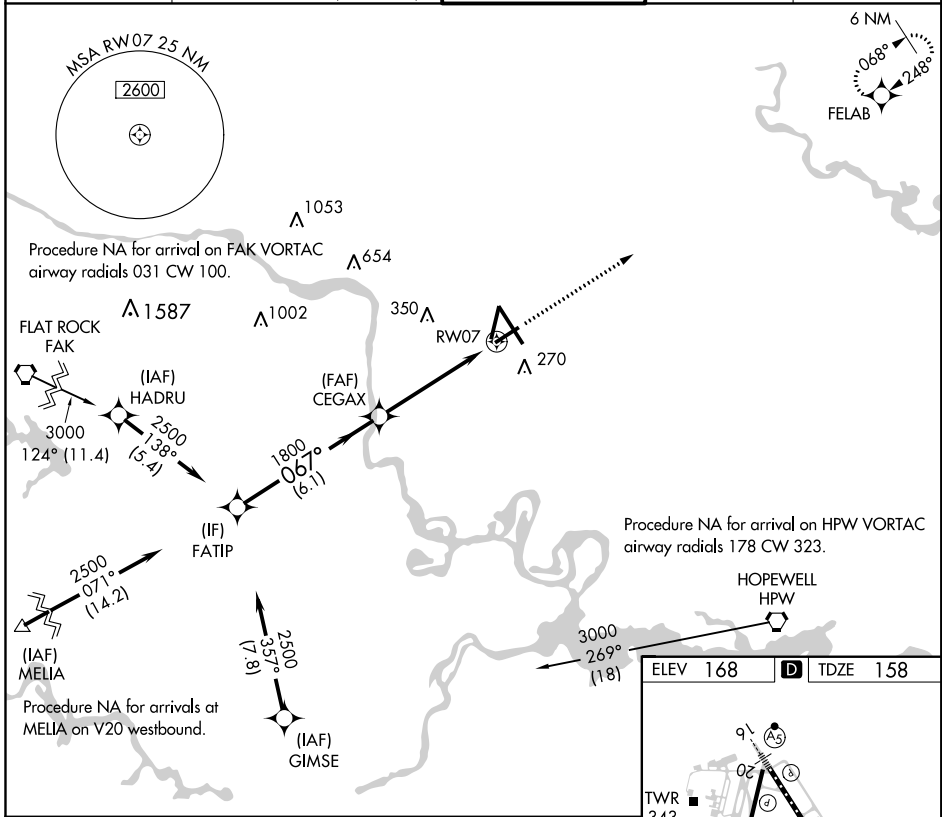


APP CRS	Rwy Idg	5183
067°	TDZE	158
	Apt Elev	168

RNAV (GPS) RWY 7

RICHMOND INTL (RIC)

RNP APCH		MISSED APPROACH: Climb to 3000 direct FELAB and hold.			
Rwy 7 helicopter visibility reduction below 3/4 SM NA.		POTOMAC APP CON 126.4 282.375 (001°-185°) 126.75 307.2 (186°-360°)		RICHMOND TOWER 121.1 257.8	
ATIS 119.15 263.025			GND CON 121.9 348.6	CLNC DEL 127.55 348.6	



CATEGORY	A	B	C	D
LNVA MDA	620-1	462 (500-1)	620-1 3/8	462 (500-1 3/8)
C CIRCLING	660-1	492 (500-1)	700-1 1/2 532 (600-1 1/2)	720-2 552 (600-2)

NE-3, 31 JAN 2019 to 28 FEB 2019

NE-3, 31 JAN 2019 to 28 FEB 2019