


APP CRS	Rwy Idg	<b>9003</b>
<b>157°</b>	TDZE	<b>167</b>
	Apt Elev	<b>168</b>

# RNAV (RNP) Y RWY 16

RICHMOND INTL (RIC)

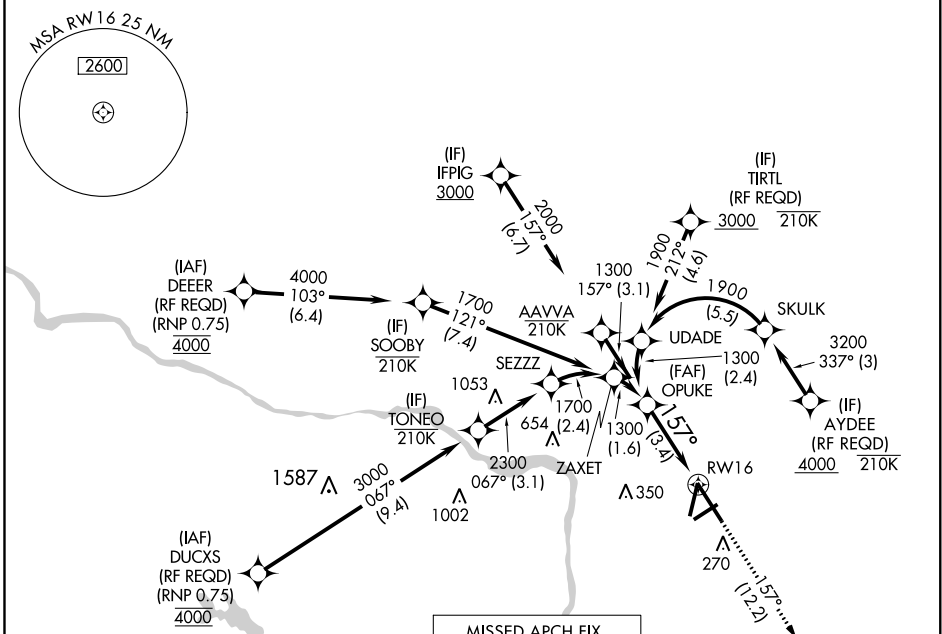
**RNP AR APCH**

For uncompensated Baro-VNAV systems, procedure NA below -11°C (13°F) or above 54°C (130°F). For inop ALS, increase RNP 0.11 all Cats visibility to RVR 5500 and RNP 0.30 all Cats visibility to 1½ SM.

**MALSR** 

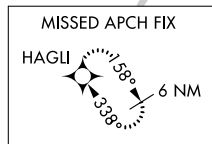
**MISSED APPROACH:**  
Climb to 2500 on track  
157° to HAGLI and hold.

POTOMAC APP CON		RICHMOND TOWER		GND CON		CLNC DEL	
ATIS	<b>126.4 282.375</b>	<b>126.75 307.2</b>	<b>121.1 257.8</b>	<b>121.9 348.6</b>	<b>127.55 348.6</b>		
	(001°-185°)	(186°-360°)					

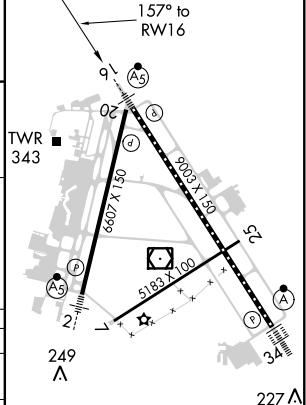
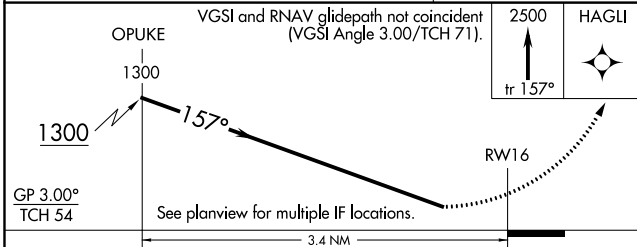


NE-3, 31 JAN 2019 to 28 FEB 2019

NE-3, 31 JAN 2019 to 28 FEB 2019



ELEV	<b>168</b>	<b>D</b>	TDZE	<b>167</b>
------	------------	----------	------	------------



CATEGORY	A	B	C	D
RNP 0.11 DA		506/40	339 (400-¾)	
RNP 0.30 DA		606/50	439 (500-1)	

## AUTHORIZATION REQUIRED

TDZ/CL Rwy 34  
HIRL Rwy 2-20, 7-25 and 16-34  
REIL Rwy 20