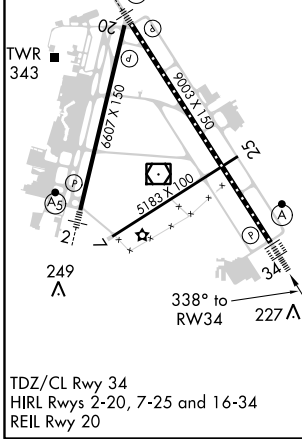
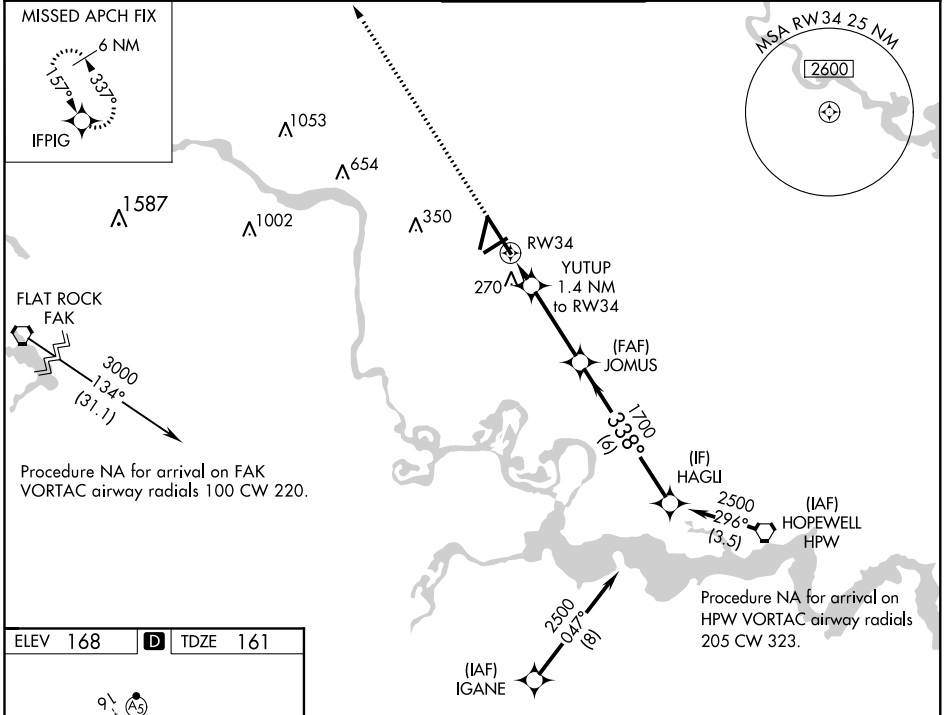


WAAS CH <b>97520</b> <b>W34A</b>	APP CRS <b>338°</b>	Rwy Idg TDZE Apt Elev	<b>9003</b> <b>161</b> <b>168</b>
--	------------------------	-----------------------------	---

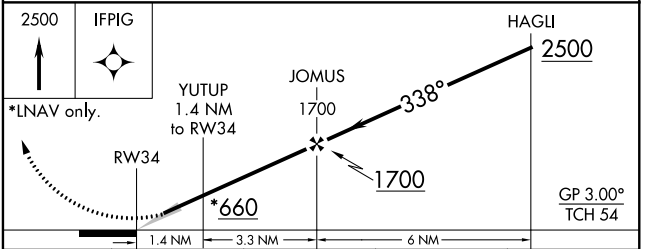
# RNAV (GPS) Z RWY 34

RICHMOND INTL (RIC)

RNP APCH. ▼ For uncompensated Baro-VNAV systems, LNAV/VNAV NA below -11°C (13°F) or above 54°C (130°F). For inop ALS, increase LNAV/VNAV all Cats visibility to 1¼ SM and LNAV Cats C and D visibility to RVR 5500.		ALSF-2 	MISSED APPROACH: Climb to 2500 direct IFPIG and hold.
ATIS <b>119.15 263.025</b>	POTOMAC APP CON <b>126.4 282.375</b> (001°-185°) <b>126.75 307.2</b> (186°-360°)	RICHMOND TOWER <b>121.1 257.8</b>	GND CON <b>121.9 348.6</b>
		CLNC DEL <b>127.55 348.6</b>	



TDZ/CL Rwy 34  
HIRL Rwy 2-20, 7-25 and 16-34  
REIL Rwy 20



CATEGORY	A	B	C	D
LPV DA		361/18	200 (200-½)	
LNAV/VNAV DA		530/37	369 (400-¾)	
LNAV MDA	520/24	359 (400-½)	520/30	359 (400-¾)
CIRCLING	660-1	492 (500-1)	700-1½ 532 (600-1½)	720-2 552 (600-2)

NE-3, 31 JAN 2019 to 28 FEB 2019

NE-3, 31 JAN 2019 to 28 FEB 2019